

TYLER, TEXAS

AL-622 (FAA)

23110

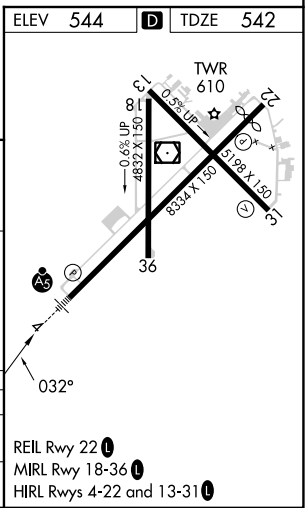
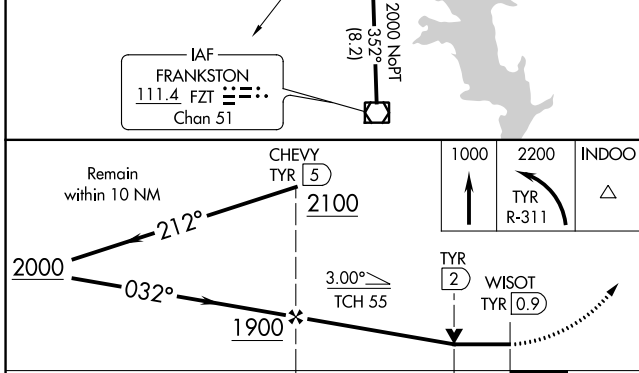
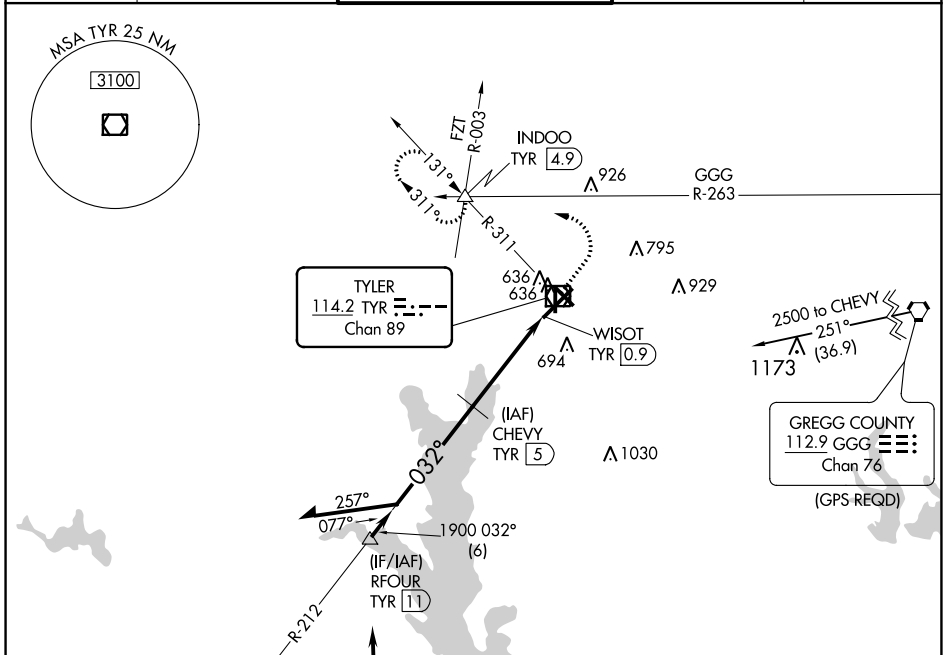
VOR/DME TYR <b>114.2</b> Chan <b>89</b>	APP CRS <b>032°</b>	Rwy Idg TDZE <b>542</b> Apt Elev <b>544</b>	<b>7734</b>
---	------------------------	---	-------------

# VOR RWY 4

TYLER POUNDS RGNL (TYR)

DME required.		MALSR	MISSED APPROACH: Climb to 1000 then climbing left turn to 2200 on TYR VOR/DME R-311 to INDOO INT/TYR 4.9 DME and hold.
▼ For inop ALS, increase Cat C/D visibility to 1 ½ SM.		AS	

ATIS <b>126.25</b>	LONGVIEW APP CON * <b>128.75 379.15</b>	POUNDS TOWER * <b>120.1 (CTAF) 257.8</b>	GND CON <b>121.9</b>	UNICOM <b>122.95</b>
-----------------------	--	---	-------------------------	-------------------------



CATEGORY	A	B	C	D
S-4	940-½ 398 (400-½)		940-¾ 398 (400-¾)	
CIRCLING	980-1 436 (500-1)	1020-1 476 (500-1)	1160-1¾ 616 (700-1¾)	1280-2¼ 736 (800-2¼)

TYLER, TEXAS  
Amdt 5C 20APR23

32°21'N-95°24'W

TYLER POUNDS RGNL (TYR)  
**VOR RWY 4**

SC-2, 18 MAY 2023 to 15 JUN 2023

SC-2, 18 MAY 2023 to 15 JUN 2023