

(GRAYM.GRAYM6) 21112
GRAYM SIX ARRIVAL

AL-626 (FAA)

BEDFORD, MASSACHUSETTS

BOSTON APP CON
 124.4 279.6
 BRADLEY APP CON
 119.0 327.1
 BED ATIS
 124.6
 BVY ATIS
 119.2
 LWM ATIS
 126.75

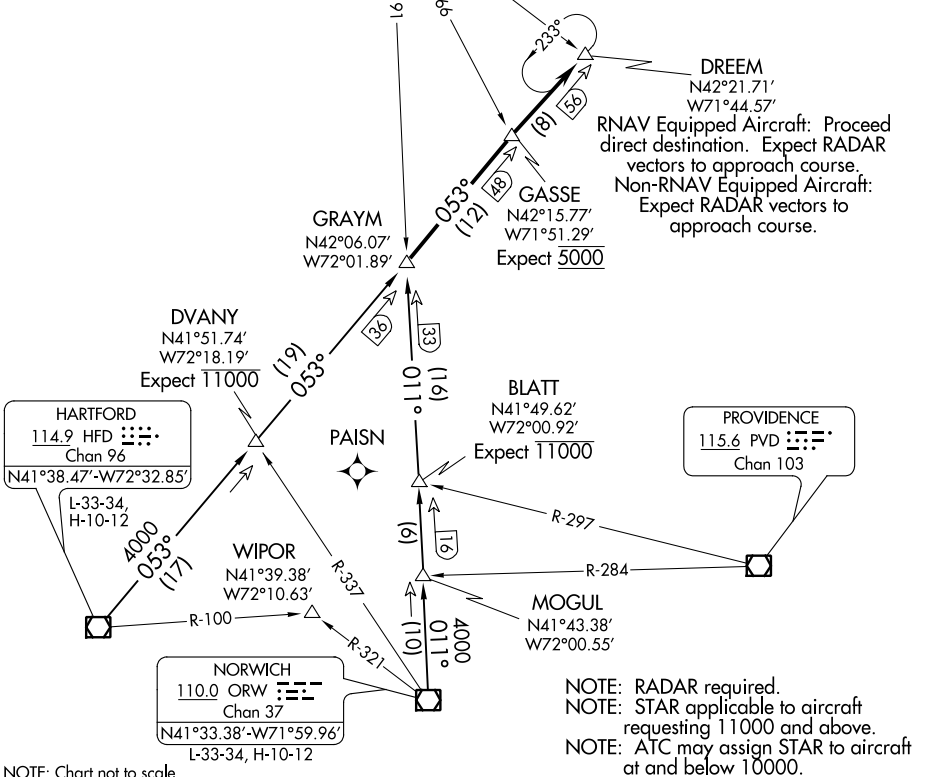
GARDNER
 110.6 GDM
 Chan 43

LAWRENCE MUNI

BEVERLY RGNL

FITCHBURG MUNI

LAURENCE G HANSCOM FLD



NE-1, 18 MAY 2023 to 15 JUN 2023

NE-1, 18 MAY 2023 to 15 JUN 2023

NOTE: Chart not to scale.

ARRIVAL ROUTE DESCRIPTION

HARTFORD TRANSITION (HFD.GRAYM6): From over HFD VOR/DME on HFD R-053 to GRAYM. Thence. . . .

NORWICH TRANSITION (ORW.GRAYM6): From over ORW VOR/DME on ORW R-011 to GRAYM. Thence. . . .

. . . . From over GRAYM on HFD R-053 to GASSE, then to DREEM, at DREEM:
RNAV EQUIPPED AIRCRAFT: Proceed direct destination expect radar vectors to approach course.
NON-RNAV EQUIPPED AIRCRAFT: Expect radar vectors to approach course.

GRAYM SIX ARRIVAL
 (GRAYM.GRAYM6) 08NOV18

BEDFORD, MASSACHUSETTS