

LOC/DME I-BED <b>111.15</b> Chan <b>48 (Y)</b>	APP CRS <b>113°</b>	Rwy Idg <b>7011</b> TDZE <b>132</b> Apt Elev <b>132</b>
--	------------------------	---

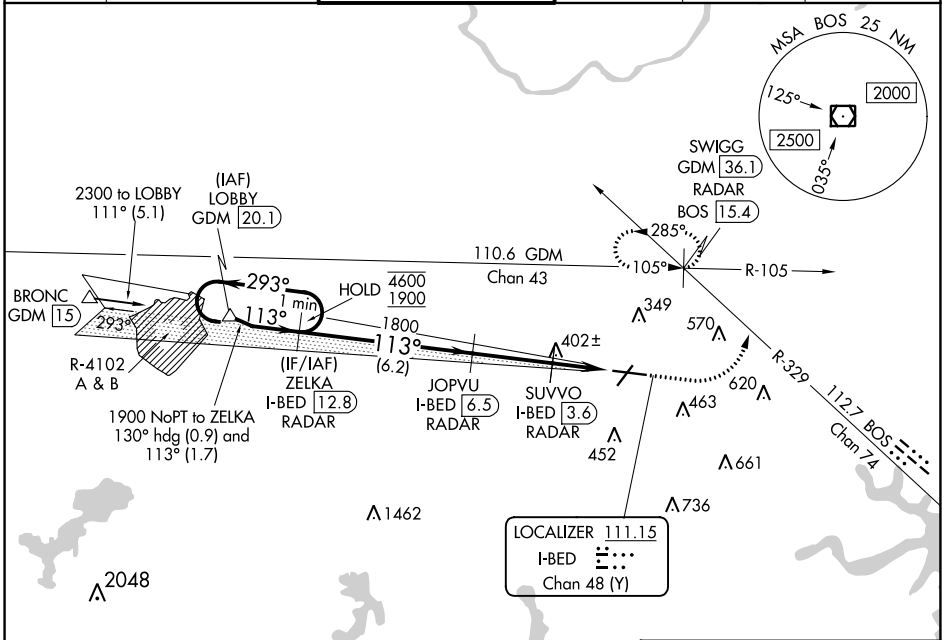
# ILS or LOC RWY 11

LAURENCE G HANSCOM FLD (BED)

RADAR required for procedure entry.  
DME or RADAR required.

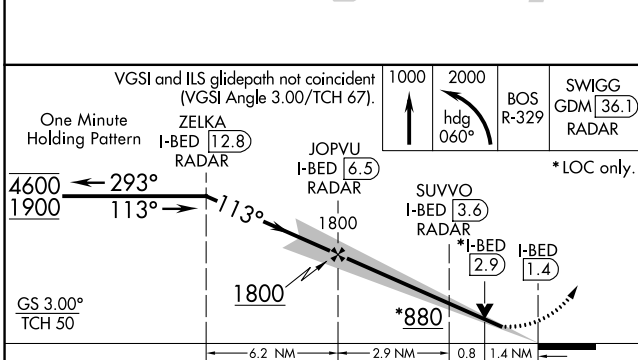
MISSED APPROACH: Climb to 1000 then climbing left turn to 2000 on heading 060° and on BOS VOR/DME R-329 to SWIGG/GDM 36.1 DME/RADAR and hold, continue climb-in-hold to 2000.

ATIS <b>124.6</b>	BOSTON APP CON <b>124.4 279.6</b>	HANSCOM TOWER* <b>118.5 (CTAF) 257.2</b>	GND CON <b>121.7</b>	CLNC DEL <b>121.85</b>	UNICOM <b>122.95</b>
----------------------	--------------------------------------	---	-------------------------	---------------------------	-------------------------

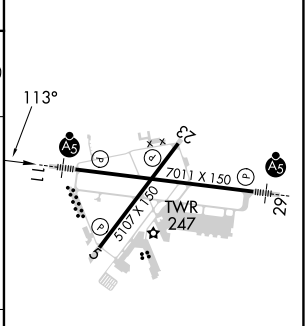


NE-1, 18 MAY 2023 to 15 JUN 2023

NE-1, 18 MAY 2023 to 15 JUN 2023



ELEV 132	TDZE 132
----------	----------



CATEGORY	A	B	C	D
S-ILS 11	383/24 251 (300-1/2)			
S-LOC 11	660/24 528 (600-1/2)	660/55 528 (600-1)		
CIRCLING	720-1 588 (600-1)	880-2 1/4 748 (800-2 1/4)	920-2 1/2 788 (800-2 1/2)	

MIRL Rwy 5-23	HIRL Rwy 11-29	REIL Rwys 5 and 23			
FAF to MAP 5.1 NM					
Knots	60	90	120	150	180
Min:Sec	5:06	3:24	2:33	2:02	1:42