

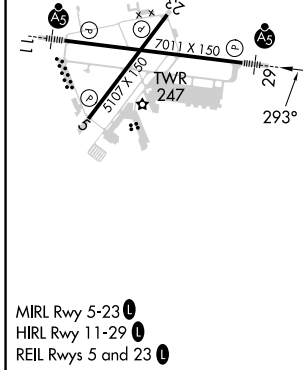
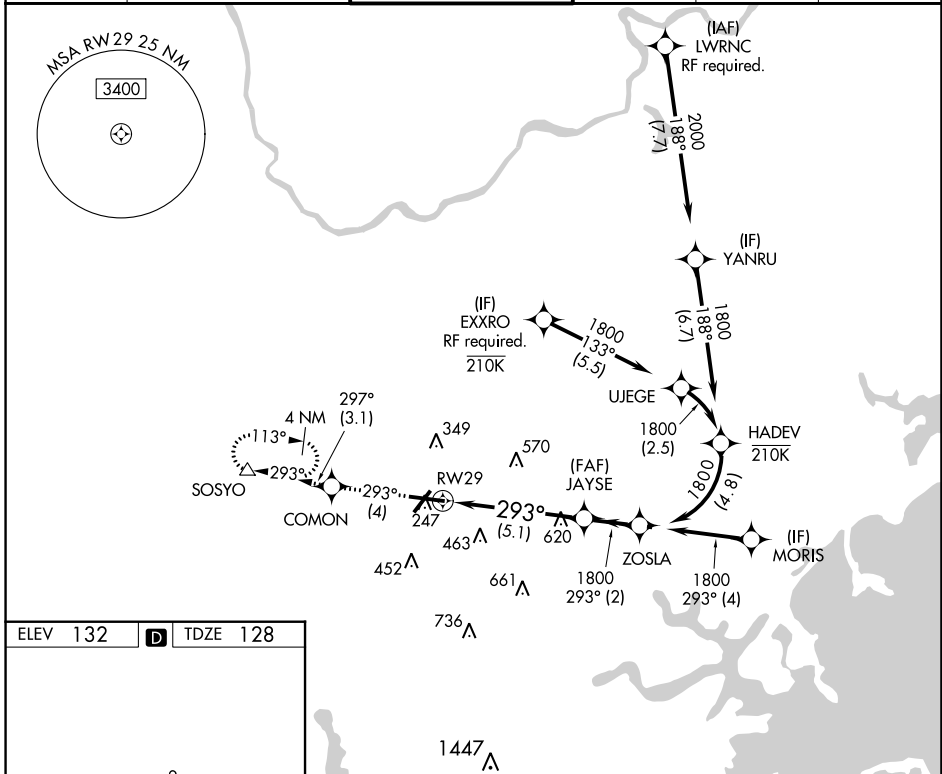
APP CRS 293°	Rwy Idg 7011
	TDZE 128
	Apt Elev 132

RNAV (RNP) Y RWY 29

LAURENCE G HANSCOM FLD (BED)

RNP AR APCH.		MALSR	MISSED APPROACH: Climb to 2000 on track 293° to COMON then on track 297° to SOSYO and hold.		
For uncompensated Baro-VNAV systems, procedure NA below -19°C or above 54°C.					

ATIS 124.6	BOSTON APP CON 124.4 279.6	HANSCOM TOWER* 118.5 (CTAF) 0 257.2	GND CON 121.7	CLNC DEL 121.85	UNICOM 122.95
----------------------	--------------------------------------	---	-------------------------	---------------------------	-------------------------



2000	↑	fr 293°	COMON	fr 297°	SOSYO	See planview for multiple IF locations.	
						JAYSE	ZOSLA
						1800	1800
						293°	1800
						1800	
							GP 3.00°
							TCH 55
						5.1 NM	2 NM
CATEGORY		A	B	C	D		
RNP 0.30 DA		651-1		523 (600-1)			
AUTHORIZATION REQUIRED							

NE-1, 18 MAY 2023 to 15 JUN 2023

NE-1, 18 MAY 2023 to 15 JUN 2023