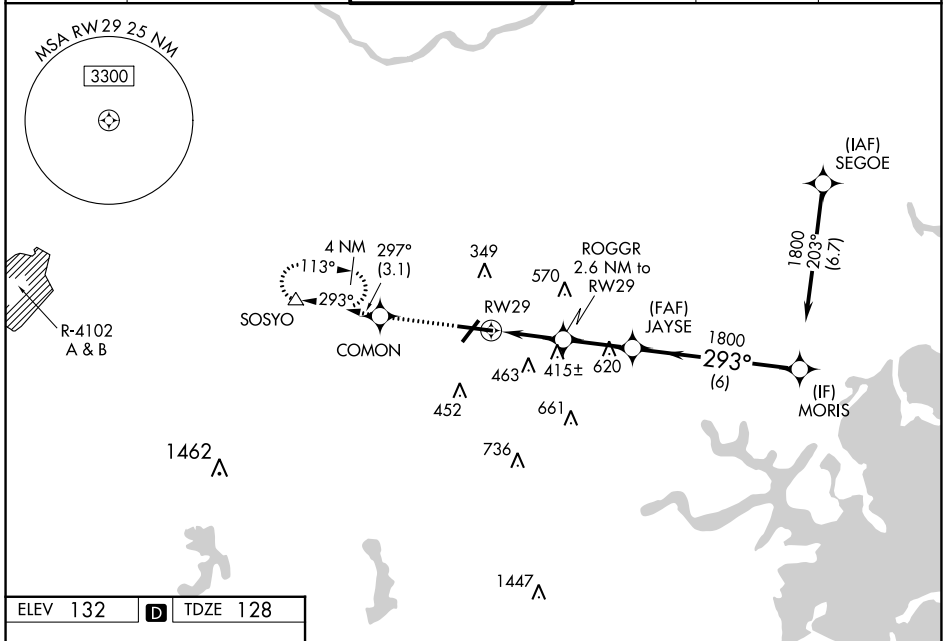


WAAS CH 86612 W29A	APP CRS 293°	Rwy Idg 7011 TDZE 128 Apt Elev 132
--	------------------------	---

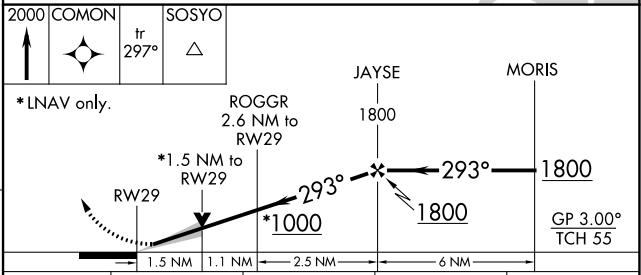
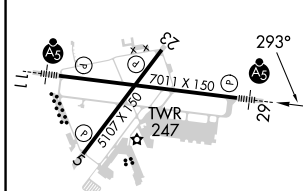
RNAV (GPS) Z RWY 29

LAURENCE G HANSCOM FLD (BED)

RNP APCH		<p>For uncompensated Baro-VNAV systems, LNAV/VNAV NA below -16°C (4°F) or above 54°C (130°F). Baro-VNAV and VDP NA with Boston altimeter setting. When local altimeter setting not received, use Boston altimeter setting; increase LPV DA to 377 feet, LNAV/VNAV DA to 663 feet; increase all MDAs 60 feet and LNAV Cats C and D, and Circling Cat D visibility ¼ SM. For inop ALS, increase LNAV/VNAV all Cats visibility and LNAV Cat C/D to 1 ⅓ SM. For inop ALS when using Boston altimeter setting, increase LNAV/VNAV all Cats visibility to 1 ½ SM and LNAV Cat C/D to 1 ⅓ SM.</p>		<p>MALSRL MISSED APPROACH: Climb to 2000 direct COMON and on track 297° to SOSYO and hold.</p>	
ATIS 124.6	BOSTON APP CON 124.4 279.6	HANSCOM TOWER ★ 118.5 (CTAF) 0 257.2	GND CON 121.7	CLNC DEL 121.85	UNICOM 122.95



ELEV 132	D	TDZE 128
----------	----------	----------



CATEGORY	A	B	C	D
LPV DA	328-½		200 (200-½)	
LNAV/VNAV DA	614-1⅛		486 (500-1⅛)	
LNAV MDA	640-½	512 (600-½)	640-1	512 (600-1)
C CIRCLING	720-1	588 (600-1)	880-2¼ 748 (800-2¼)	920-2½ 788 (800-2½)

MIRL Rwy 5-23
HIRL Rwy 11-29
REIL Rwy 5 and 23

NE-1, 18 MAY 2023 to 15 JUN 2023

NE-1, 18 MAY 2023 to 15 JUN 2023