

LOC I-GNJ 111.75	APP CRS 226°	Rwy Idg 6604
		TDZE 979
		Apt Elev 979

ILS or LOC RWY 22

BLUE GRASS (LEX)

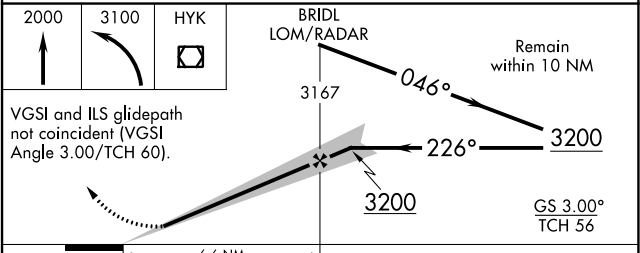
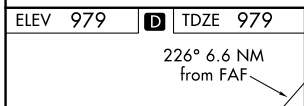
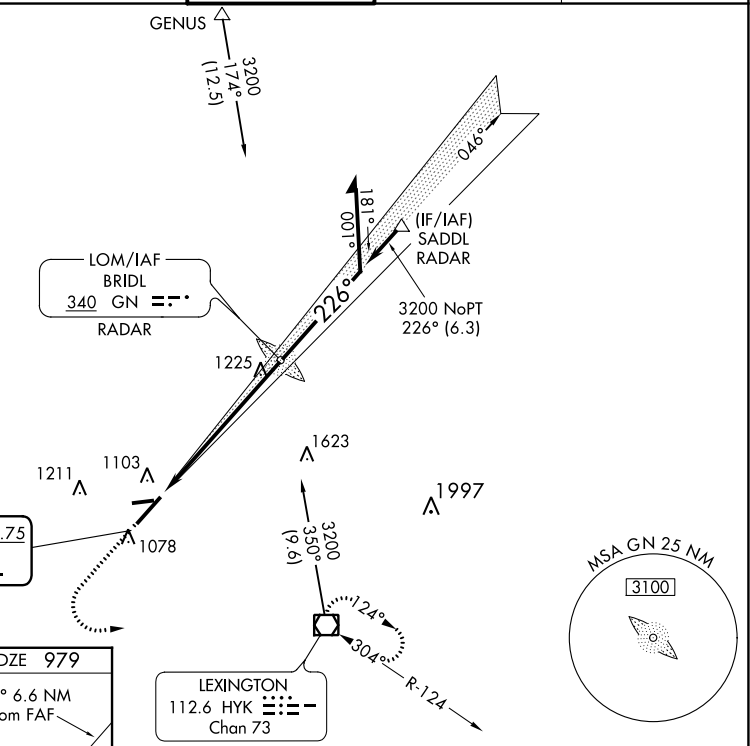
⚠ Rwy 22 helicopter visibility reduction below 3/4 SM NA. When local altimeter setting not received, use Frankfort altimeter setting: increase all DAs to 1291 feet and all visibilities 1/4 SM; increase all MDAs 80 feet and visibility Cats C and D 1/2 SM.

MISSED APPROACH: Climb to 2000 then climbing left turn to 3100 direct HYK VOR/DME and hold.

ATIS 126.3	LEXINGTON APP CON 120.15 259.3	LEXINGTON TOWER 119.1 257.8	GND CON 121.9	CLNC DEL 132.35
----------------------	--	---------------------------------------	-------------------------	---------------------------

ALTERNATE MISSED APCH FIX

BRIDL GN **340** RADAR



CATEGORY	A	B	C	D
S-ILS 22	1229-3/4 250 (300-3/4)			
S-LOC 22	1520-1 541 (600-1)	1520-1 1/2 541 (600-1 1/2)	1520-1 3/4 541 (600-1 3/4)	
<input checked="" type="checkbox"/> CIRCLING	1520-1 541 (600-1)	1520-1 1/2 541 (600-1 1/2)	1600-2 621 (700-2)	

SE-1, 18 MAY 2023 to 15 JUN 2023

SE-1, 18 MAY 2023 to 15 JUN 2023