


LOC I-LEX <b>110.1</b>	APP CRS <b>046°</b>	Rwy Idg <b>6604</b> TDZE <b>969</b> Apt Elev <b>979</b>
---------------------------	------------------------	--

# ILS or LOC RWY 4

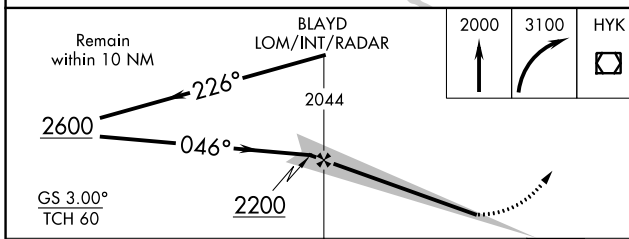
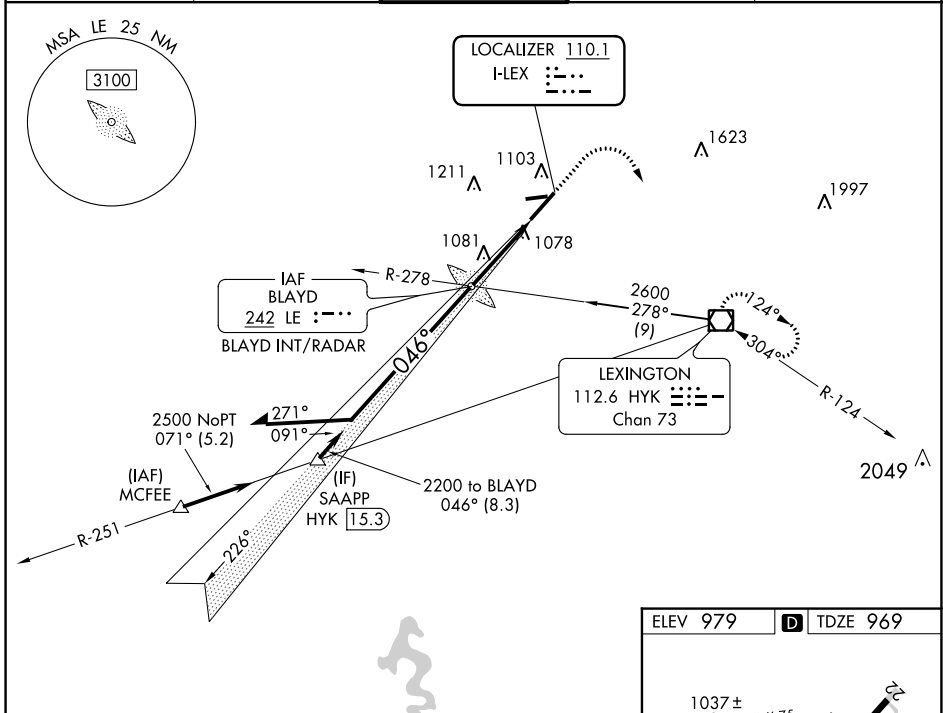
BLUE GRASS (LEX)

**⚠** When local altimeter setting not received, use Frankfort altimeter setting; increase all DAs to 1231 feet; increase all MDA's 80 feet and visibility Cats C and D ¼ SM. For inop ALS when using Frankfort altimeter setting, increase S-ILS 4 all Cats visibility to RVR 4500.

**MALSR** 

**MISSED APPROACH:** Climb to 2000 then climbing right turn to 3100 direct to HYK VOR/DME and hold.

ATIS <b>126.3</b>	LEXINGTON APP CON <b>120.15 259.3</b>	LEXINGTON TOWER <b>119.1 257.8</b>	GND CON <b>121.9</b>	CLNC DEL <b>132.35</b>
----------------------	--	---------------------------------------	-------------------------	---------------------------



ELEV 979 **D** TDZE 969

1037±  
4000 X 75  
0.6% UP

7004 X 150  
0.3% UP

TWR 1091

TDZ/CL Rwy 4  
REIL Rwys 9, 22 and 27  
HIRL Rwy 4-22  
MIRL Rwy 9-27

046° 3.3 NM from FAF

FAF to MAP 3.3 NM

Knots	60	90	120	150	180
Min:Sed	3:18	2:12	1:39	1:19	1:06

CATEGORY	A	B	C	D
S-ILS 4	1169/18 200 (200-½)			
S-LOC 4	1340/24	371 (400-½)	1340/35	371 (400-¾)
<b>C</b> CIRCLING	1420-1 441 (500-1)	1440-1 461 (500-1)	1520-1½ 541 (600-1½)	1600-2 621 (700-2)

SE-1, 18 MAY 2023 to 15 JUN 2023

SE-1, 18 MAY 2023 to 15 JUN 2023