

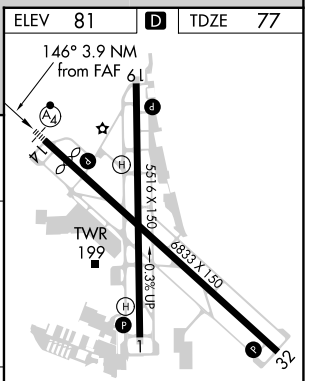
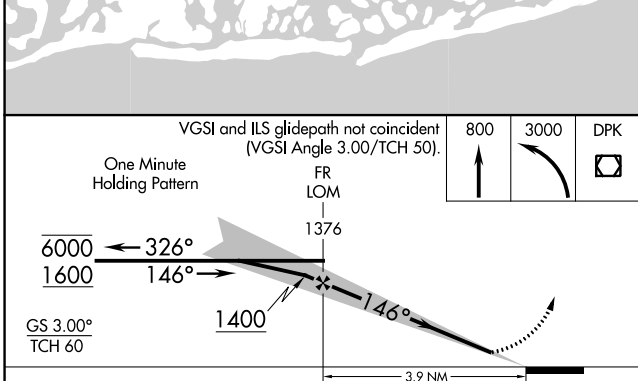
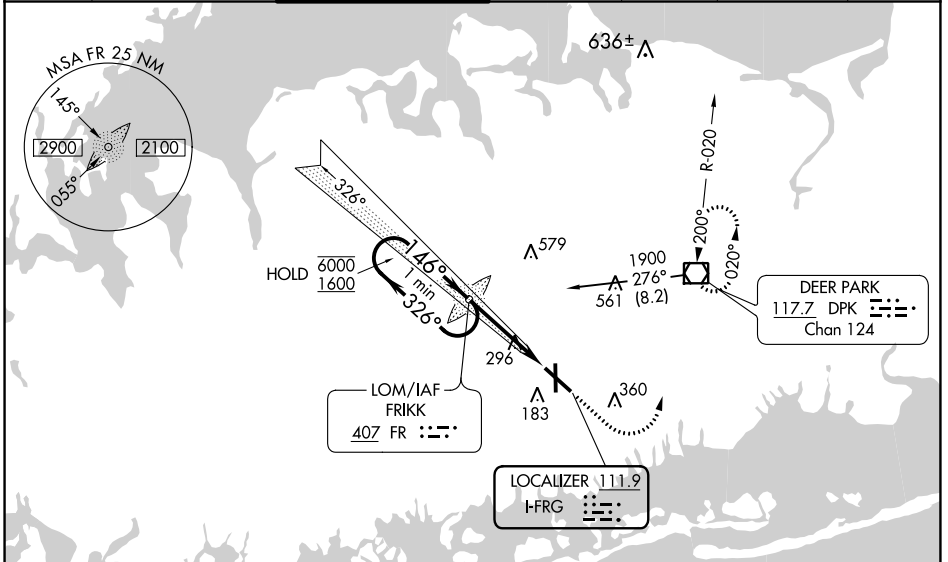
LOC I-FRG <b>111.9</b>	APP CRS <b>146°</b>	Rwy Ldg TDZE Apt Elev <b>6157</b> <b>77</b> <b>81</b>
---------------------------	------------------------	---

# ILS or LOC RWY 14

REPUBLIC (F'RG)

<p><b>⚠</b> Autopilot coupled approach NA below 550. <b>⚠</b> Inop table does not apply to S-ILS 14.</p>	<p>MALSF</p>	<p>MISSED APPROACH: Climb to 800 then climbing left turn to 3000 direct DPK VOR/DME and hold, continue climb-in-hold to 3000.</p>
--	--------------	---

ATIS <b>126.65</b>	NEW YORK APP CON <b>128.125 269.0</b>	REPUBLIC TOWER ★ <b>118.8</b> (CTAF) <b>279.65</b>	GND CON <b>121.6 269.6</b>	CLNC DEL <b>128.25</b>	CLNC DEL <b>128.25</b> (When twr closed)	UNICOM <b>122.95</b>
-----------------------	--	---	-------------------------------	---------------------------	--	-------------------------



CATEGORY	A	B	C	D
S-ILS 14	277- <sup>3</sup> / <sub>4</sub> 200 (200- <sup>3</sup> / <sub>4</sub> )			
S-LOC 14	560- <sup>3</sup> / <sub>4</sub>	483 (500- <sup>3</sup> / <sub>4</sub> )	560-1 <sup>1</sup> / <sub>8</sub>	483 (500-1 <sup>1</sup> / <sub>8</sub> )
<b>C</b> CIRCLING	640-1 559 (600-1)	720-1 639 (700-1)	860-2 <sup>1</sup> / <sub>4</sub> 779 (800-2 <sup>1</sup> / <sub>4</sub> )	1000-3 919 (1000-3)

FAF to MAP 3.9 NM					
Knots	60	90	120	150	180
Min:Sec	3:54	2:36	1:57	1:34	1:18

NE-2, 18 MAY 2023 to 15 JUN 2023

NE-2, 18 MAY 2023 to 15 JUN 2023