


LOC I-AZO 110.9	APP CRS 354°	Rwy ldg TDZE Apt Elev	6502 868 874
---------------------------	------------------------	-----------------------------	---

ILS or LOC RWY 35

KALAMAZOO/BATTLE CREEK INTL (AZO)

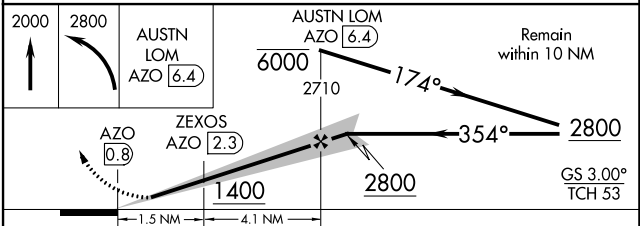
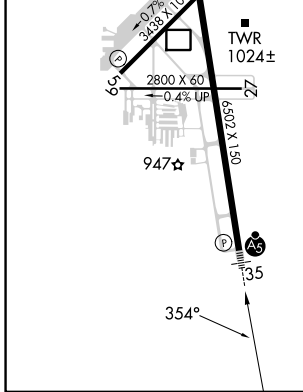
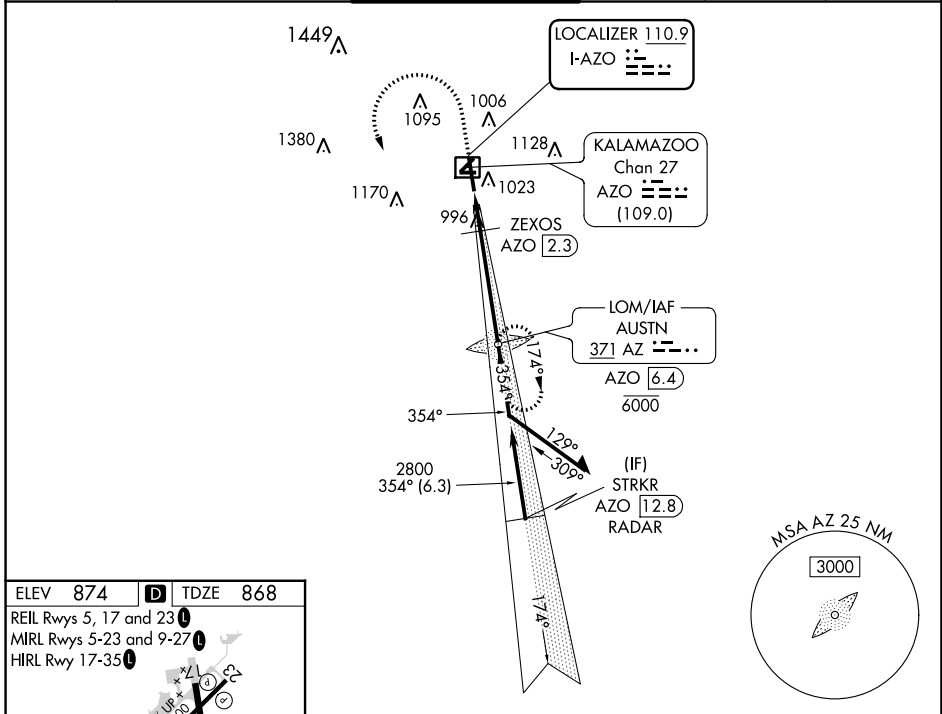
ADF required. DME required for LOC only. RADAR required for procedure entry.

NA DME from AZO DME. DME use requires simultaneous reception of I-AZO and AZO DME. Circling Rwy 5, 9, 23, 27 NA at night. When local altimeter setting not received, use Battle Creek altimeter setting: increase S-ILS 35 DA to 1112 feet; increase all MDAs 60 feet and visibility S-LOC 35 Cat C/D to RVR 4500. * RVR 1800 authorized with use of FD or AP or HUD to DA (NA when using Battle Creek altimeter setting).

MALSR 

MISSED APPROACH: Climb to 2000 then climbing left turn to 2800 direct AUSTN LOM/AZO 6.4 DME and hold.

ATIS 127.25	GREAT LAKES APP CON * 121.2 239.25	KALAMAZOO TOWER * 118.3 (CTAF) 0 257.875	GND CON 121.9	CLNC DEL 121.75	UNICOM 122.95
-----------------------	--	--	-------------------------	---------------------------	-------------------------



CATEGORY	A	B	C	D
S-ILS 35*	1068/24 200 (200-½)			
S-LOC 35	1260/24	392 (400-½)	1260/35	392 (400-¾)
C CIRCLING	1340-1	466 (500-1)	1480-1¾ 606 (700-1¾)	1480-2 606 (700-2)

EC-1, 18 MAY 2023 to 15 JUN 2023

EC-1, 18 MAY 2023 to 15 JUN 2023