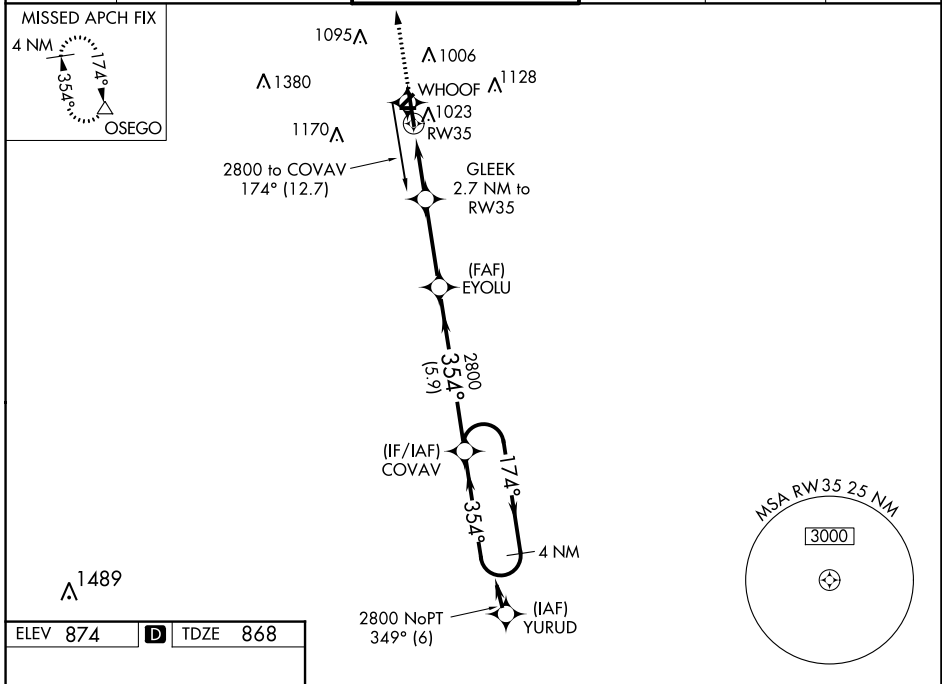


WAAS CH <b>61102</b> <b>W35A</b>	APP CRS <b>354°</b>	Rwy Idg <b>6502</b> TDZE <b>868</b> Apt Elev <b>874</b>
--	------------------------	---

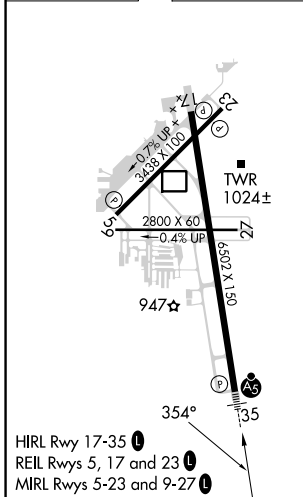
# RNAV (GPS) RWY 35

KALAMAZOO/BATTLE CREEK INTL (AZO)

RNP APCH.			MALSR		MISSED APPROACH: Climb to 3000 direct OSEGO and hold.	
▼ For uncompensated Baro-VNAV systems, LNAV/VNAV NA below -19°C or above 54°C. Circling Rwy 5, 9, 17, 23, 27 NA at night. **RVR 1800 authorized with use of FD or AP or HUD to DA.			ATIS <b>127.25</b>		GREAT LAKES APP CON * <b>121.2 239.25</b>	
KALAMAZOO TOWER * <b>118.3 (CTAF) 0 257.875</b>			GND CON <b>121.9</b>		CLNC DEL <b>121.75</b>	
					UNICOM <b>122.95</b>	



ELEV 874	<b>D</b>	TDZE 868
----------	----------	----------



3000	OSEGO	4 NM Holding Pattern			
* LNAV only.		GLEEK 2.7 NM to RW35	EYOLU	COVAV	2800
*1.1 NM to RW35		*1780	354°	174°	2800
1.1		1.6 NM	3.2 NM	5.9 NM	
GP 3.00° TCH 53					
CATEGORY	A	B	C	D	
LPV DA **	1068/24		200 (200-½)		
LNAV/VNAV DA	1264/35		396 (400-¾)		
LNAV MDA	1280/24	412 (500-½)		1280/40	412 (500-¾)
<b>C</b> CIRCLING	1380-1	506 (600-1)		1480-1¾ 606 (700-1¾)	1480-2 606 (700-2)