

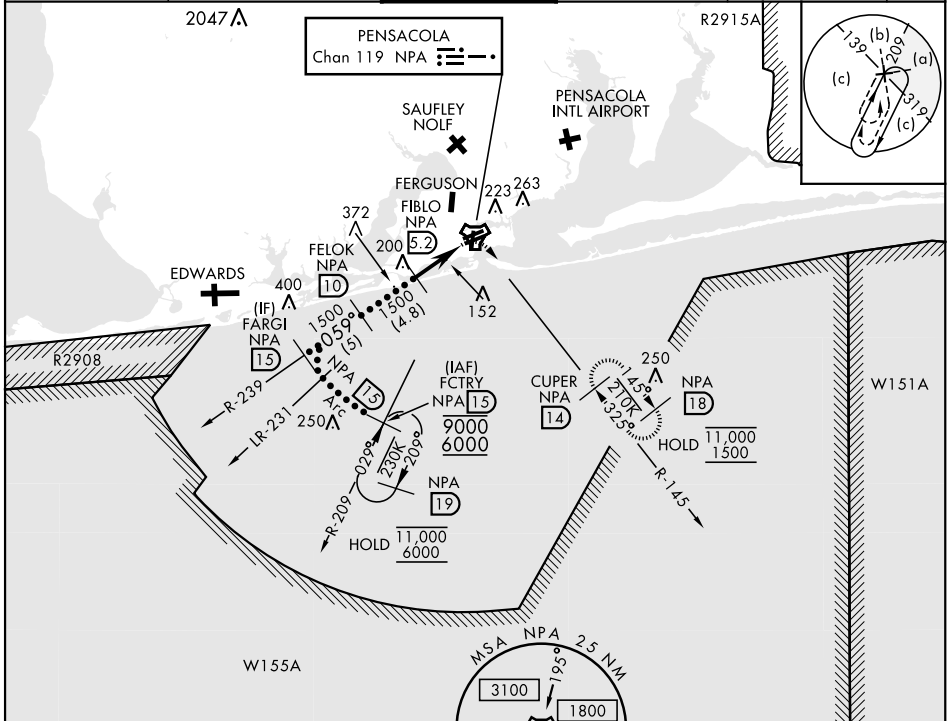
PENSACOLA, FLORIDA

# HI-TACAN Z RWY 7R

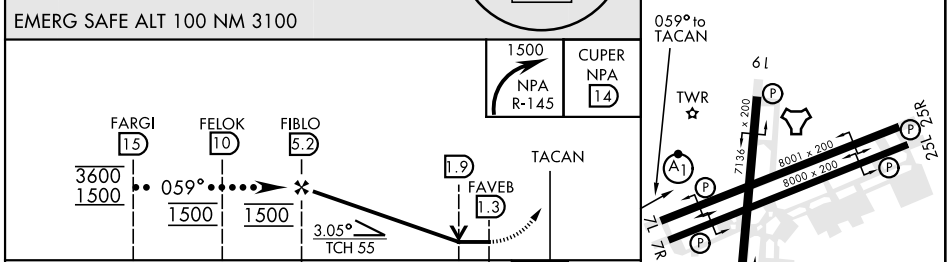
TACAN NPA Chan 119	APCH CRS 059°	Rwy ldg TDZE 8000 25 28	Arpt Elev	AL-736 [USN]	PENSACOLA NAS (FORREST SHERMAN FLD) (KNPA)
-----------------------	------------------	----------------------------------	-----------	--------------	--

RADAR required. MISSED APPROACH: Climbing right turn to 1500 via NPA TACAN R-145 to CUPER and hold.

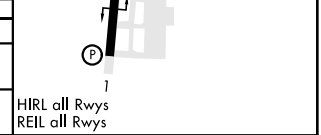
ATIS 124.35 266.8	PENSACOLA APP CON 120.65 270.8	SHERMAN TOWER 120.7 340.2	GND CON 121.7 336.4	CLNC DEL 134.1 268.7	ASR/PAR
----------------------	-----------------------------------	------------------------------	------------------------	-------------------------	---------



EMERG SAFE ALT 100 NM 3100	ELEV 28	TDZE 25
----------------------------	---------	---------



CATEGORY	C	D	E
S-7R	440-1½	415 (500-1½)	
CIRCLING	540-1½ 512 (600-1½)	580-2	552 (600-2)



PENSACOLA, FLORIDA 30°21'N-87°19'W PENSACOLA NAS (FORREST SHERMAN FLD) (KNPA)  
Orig 02DEC21

# HI-TACAN Z RWY 7R

SE-3, 18 MAY 2023 to 15 JUN 2023

SE-3, 18 MAY 2023 to 15 JUN 2023