

PENSACOLA, FLORIDA

# TACAN Y RWY 19

TACAN NPA Chan <b>119</b>	APCH CRS <b>182°</b>	Rwy ldg TDZE Arprt Elev	<b>7136</b> <b>22</b> <b>28</b>
------------------------------	-------------------------	-------------------------------	---------------------------------------

AL-736 [USN]

PENSACOLA NAS (FORREST SHERMAN FLD) (KNPA)

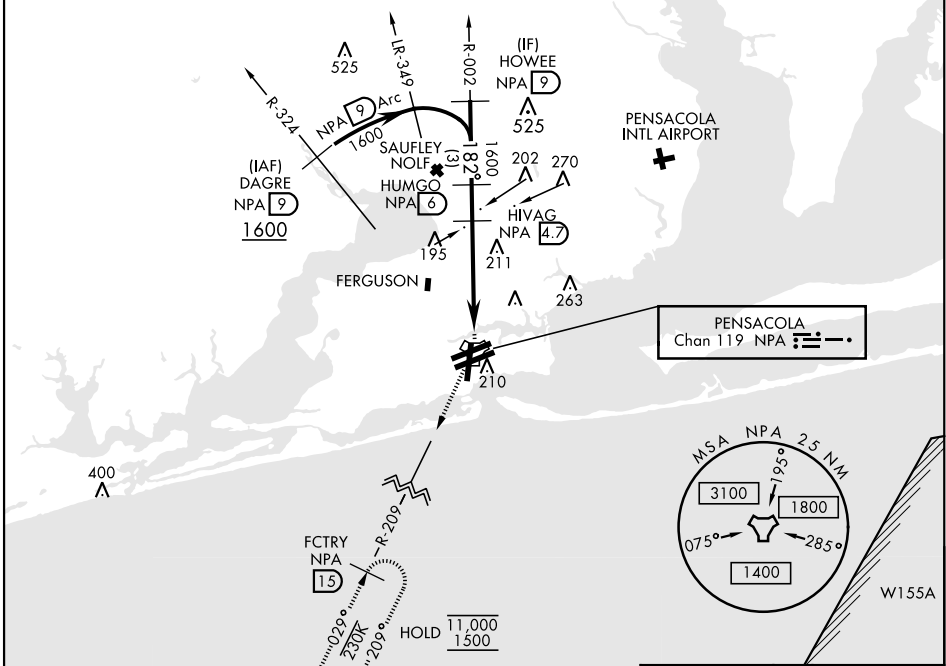
RADAR Required.

MISSED APPROACH: Climbing right turn to 1500 via NPA TACAN R-209 to FCTRY and hold.

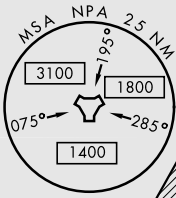
ATIS <b>124.35 266.8</b>	PENSACOLA APP CON <b>120.65 270.8</b>	SHERMAN TOWER <b>120.7 340.2</b>	GND CON <b>121.7 336.4</b>	CLNC DEL <b>134.1 268.7</b>	ASR/ PAR
-----------------------------	--	-------------------------------------	-------------------------------	--------------------------------	-------------

CAUTION: Intermediate seg len 4.3 NM is less than minimum 6 NM.

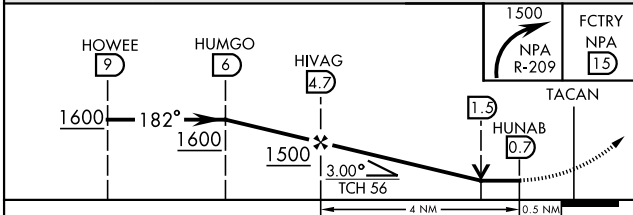
The final apch course is 427' from rwy centerline at 3000' from thld.



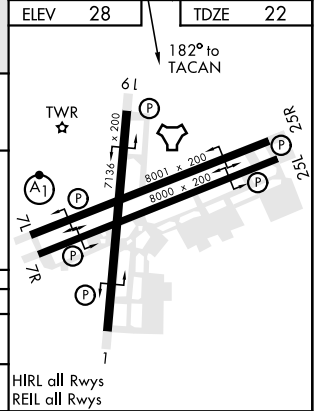
PENSACOLA Chan 119 NPA



EMERG SAFE ALT 100 NM 3100



CATEGORY	A	B	C	D	E
S-19	500-1 478 (500-1)		500-1 478 (500-1)		
CIRCLING	520-1 492 (500-1)		540-1 512 (600-1 1/2)	580-2 552 (600-2)	



PENSACOLA, FLORIDA  
Orig 02DEC21

30°21'N-87°19'W

PENSACOLA NAS (FORREST SHERMAN FLD) (KNPA)

# TACAN Y RWY 19

SE-3, 18 MAY 2023 to 15 JUN 2023

SE-3, 18 MAY 2023 to 15 JUN 2023