

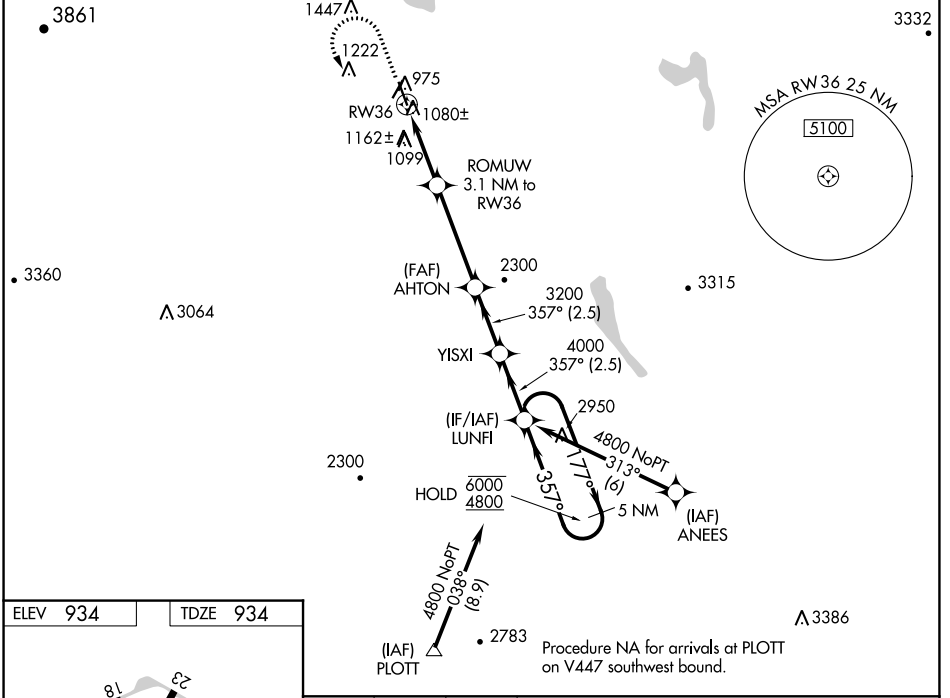
WAAS CH 82737 W36A	APP CRS 357°	Rwy Idg TDZE Apt Elev	5301 934 934
--	------------------------	-----------------------------	---

RNAV (GPS) RWY 36

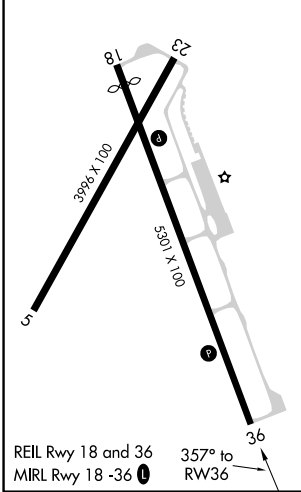
NORtheast KINGDOM INTL (EFK)

RNP APCH.	MISSED APPROACH: Climb to 2300 then climbing left turn to 4800 direct LUNFI and hold, continue climb-in-hold to 4800.
<p>Procedure NA at night.</p> <p>Rwy 36 helicopter visibility reduction below 1 SM NA.</p> <p>-32°C</p>	

AWOS-3P 118.275	BOSTON CENTER 135.7 282.2	UNICOM 122.8 (CTAF) 0
---------------------------	-------------------------------------	---------------------------------



ELEV 934	TDZE 934
----------	----------



Visual Segment - Obstacles.		5 NM Holding Pattern		
2300	4800	LUNFI	LUNFI	
ROMUW 3.1 NM to RW36		AHTON	YISXI	
RW36		3200	4000	
1960		357°	177° → 6000	
← 357° 4800				
← 3.1 NM	← 3.9 NM	← 2.5 NM	← 2.5 NM	
CATEGORY	A	B	C	D
LP MDA	1340-1	406 (500-1)	1340-1½ 406 (500-1½)	NA
LNAV MDA	1420-1	486 (500-1)	1420-1¾ 486 (500-1¾)	NA
CIRCLING	1440-1 506 (600-1)	1600-1 666 (700-1)	2020-3 1086 (1100-3)	NA

NE-1, 18 MAY 2023 to 15 JUN 2023

NE-1, 18 MAY 2023 to 15 JUN 2023