


WAAS CH <b>78323</b> <b>W30A</b>	APP CRS <b>306°</b>	Rwy Idg <b>7959</b> TDZE <b>591</b> Apt Elev <b>597</b>
--	------------------------	---

# RNAV (GPS) Y RWY 30

GARY/CHICAGO INTL (GYY)

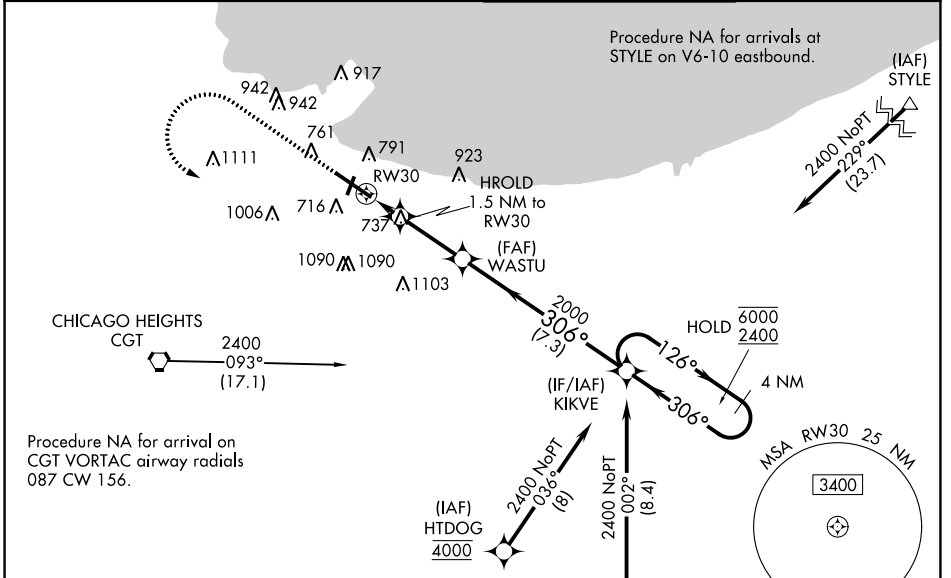
RNP APCH - GPS.

**⚠** For uncompensated Baro-VNAV systems, LNAV/VNAV NA below -16°C or above 54°C. For inop ALS, increase LNAV Cat C and D visibility to RVR 6000.  
**\*\* RVR 1800 authorized with use of FD or AP or HUD to DA (NA when using Chicago Midway Intl altimeter setting).**

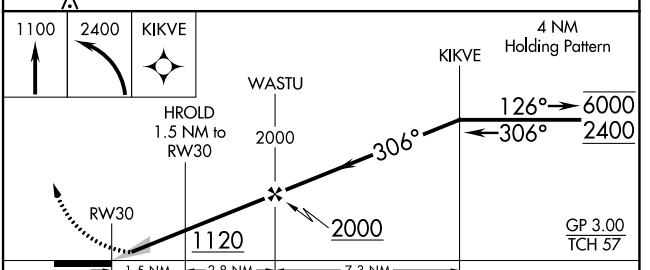
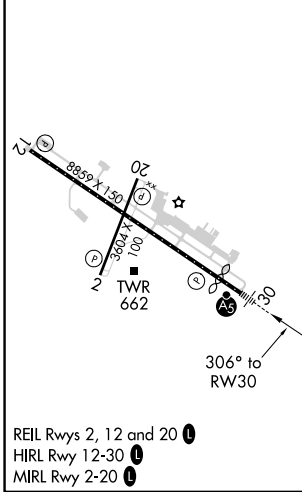
MALSR 

**MISSED APPROACH:** Climb to 1100 then climbing left turn to 2400 direct KIKVE and hold.

ATIS <b>134.575</b>	CHICAGO APP CON <b>133.1 285.6</b>	GARY TOWER ★ <b>125.6 (CTAF)</b>	GND CON <b>121.9</b>
------------------------	---------------------------------------	-------------------------------------	-------------------------



ELEV 597	<b>D</b>	TDZE 591
----------	----------	----------



CATEGORY	A	B	C	D
LPV DA**		791/24	200 (200-1/2)	
LNAV/VNAV DA		991/35	400 (400-5/8)	
LNAV MDA	1000/24	409 (500-1/2)	1000/40	409 (500-3/4)
<b>C</b> CIRCLING	1160-1 563 (600-1)	1180-1 583 (600-1)	1400-2 1/4 803 (900-2 1/4)	1420-2 3/4 823 (900-2 3/4)

EC-2, 18 MAY 2023 to 15 JUN 2023

EC-2, 18 MAY 2023 to 15 JUN 2023