

ILS or LOC RWY 3

LEA COUNTY RGNL (HOB)

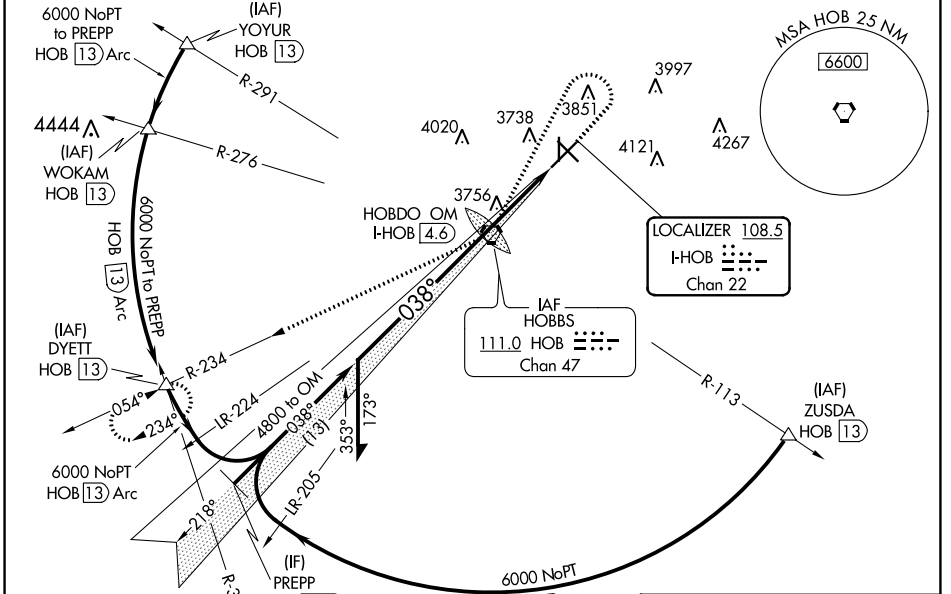
LOC/DME I-HOB 108.5 Chan 22	APP CRS 038°	Rwy Idg 7020 TDZE 3652 Apt Elev 3661
--	------------------------	---

⚠ When local altimeter setting not received, use Carlsbad altimeter setting and increase all DA 281 feet and all MDA 300 feet; increase S-ILS all Cats visibility $\frac{3}{4}$ mile, increase S-LOC Cats C/D visibility $\frac{3}{4}$ mile, increase Circling Cat C visibility $\frac{3}{4}$ mile, increase Circling Cat D visibility $\frac{1}{2}$ mile. For inoperative MALSRL, increase Carlsbad altimeter setting S-ILS all Cats visibility to $1\frac{3}{4}$. VDP NA when using Carlsbad altimeter setting. Rwy 17 helicopter visibility reduction below 1 SM NA. Circling Rwy 17 NA at night.

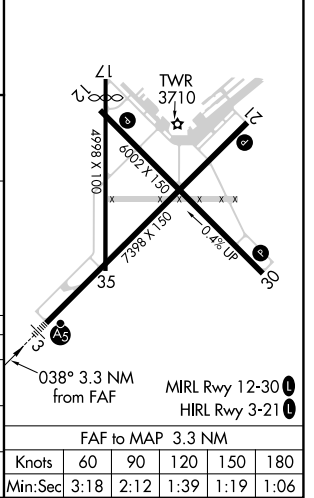
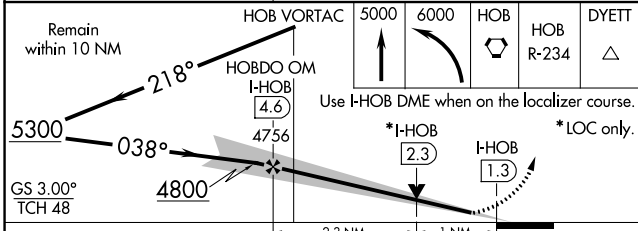
MALSRL

MISSED APPROACH: Climb to 5000 then climbing left turn to 6000 direct HOB VORTAC then via HOB VORTAC R-234 to DYETT INT/HOB 13 DME and hold.

ATIS 119.75	FORT WORTH CENTER 133.1 298.95	HOBBES TOWER * 120.65 (CTAF) 0 317.4	GND CON 121.9	UNICOM 122.95
-----------------------	--	---	-------------------------	-------------------------



ELEV 3661	D TDZE 3652
-----------	--------------------



CATEGORY	A	B	C	D
S-ILS 3		3852-1/2 200 (200-1/2)		
S-LOC 3	4020-1/2 368 (400-1/2)		4020-3/4 368 (400-3/4)	
C CIRCLING	4120-1 459 (500-1)	4160-1 499 (500-1)	4440-2 1/4 779 (800-2 1/4)	4440-2 1/2 779 (800-2 1/2)

SW-1, 18 MAY 2023 to 15 JUN 2023

SW-1, 18 MAY 2023 to 15 JUN 2023