

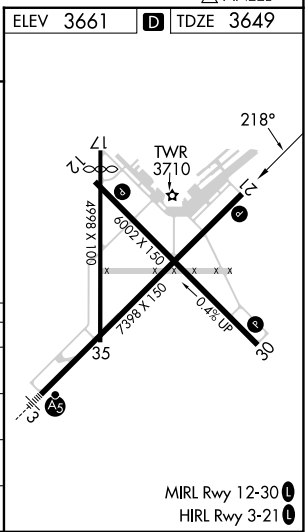
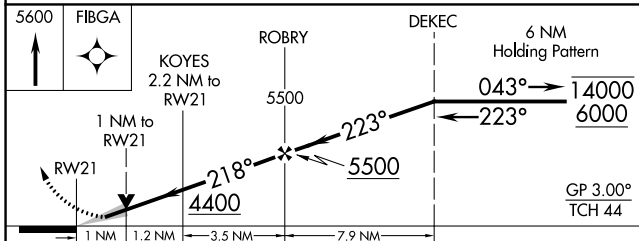
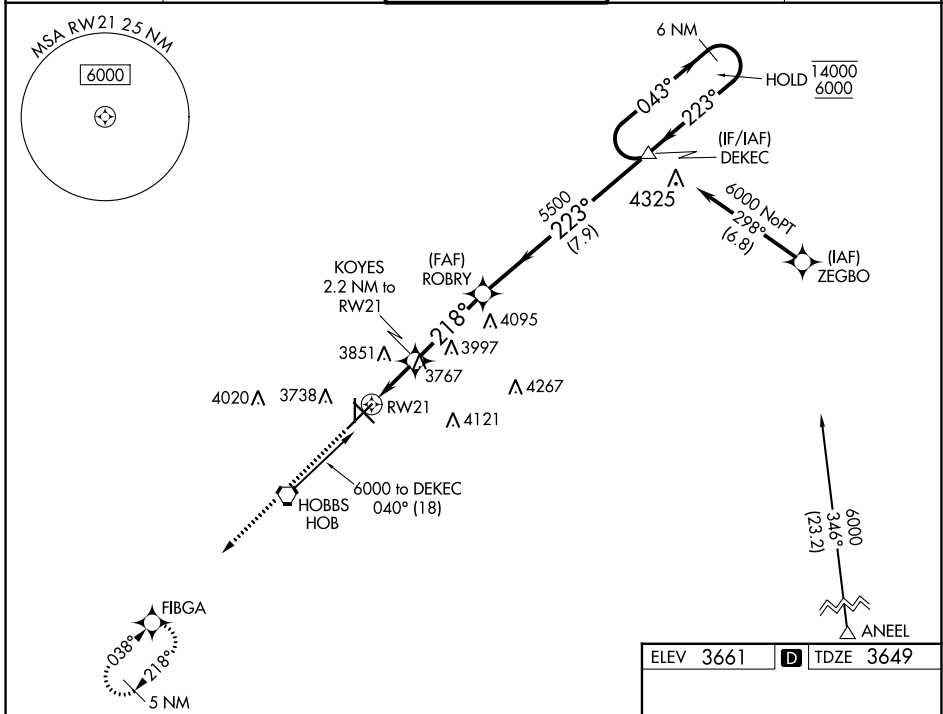
WAAS CH 82735 W21A	APP CRS 218°	Rwy Idg TDZE Apt Elev	7398 3649 3661
--	------------------------	-----------------------------	---

RNAV (GPS) RWY 21

LEA COUNTY RGNL (HOB)

RNP APCH - GPS.	MISSED APPROACH: Climb to 5600 direct FIBGA and hold.
-----------------	---

ATIS 119.75	FORT WORTH CENTER 133.1 298.95	HOBBBS TOWER ★ 120.65 (CTAF) 317.4	GND CON 121.9	UNICOM 122.95
-----------------------	--	--	-------------------------	-------------------------



SW-1, 18 MAY 2023 to 15 JUN 2023

SW-1, 18 MAY 2023 to 15 JUN 2023