

WAAS CH 63136 W30A	APP CRS 307°	Rwy Idg TDZE Apt Elev	7500 4444 4457
--	------------------------	-----------------------------	---

RNAV (GPS) RWY 30

LAS CRUCES INTL (LRU)

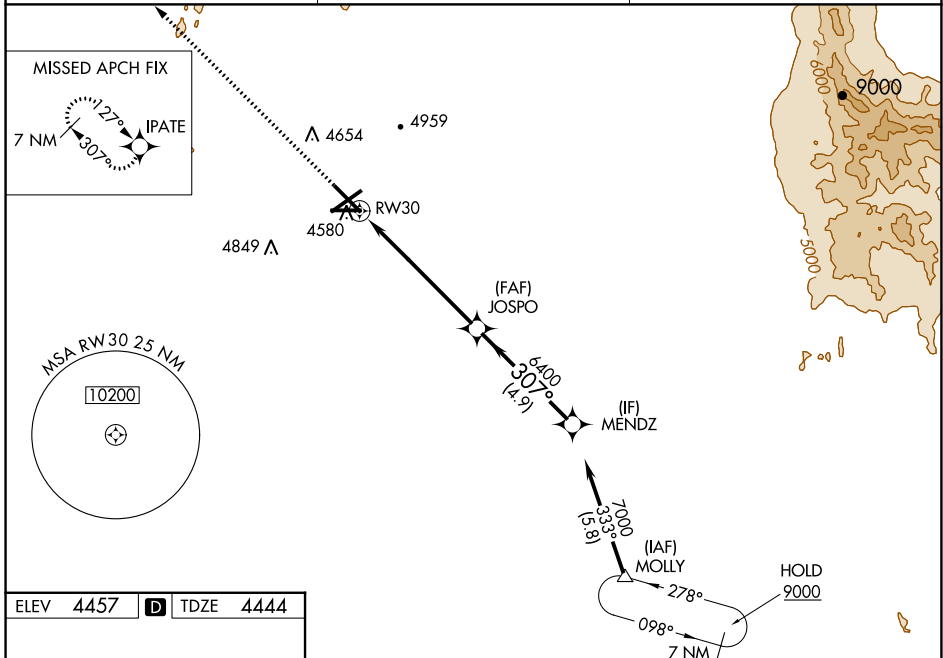
⚠ For uncompensated Baro-VNAV systems, LNAV/VNAV NA below -12°C (11°F) or above 51°C (124°F). DME/DME RNP-0.3 NA. Baro-VNAV and VDP NA when using Deming altimeter setting. When local altimeter setting not received, use Deming altimeter setting; increase LPV DA to 4758 feet, LNAV/VNAV DA to 4863 feet and all visibilities 3/8 mile; increase all MDA 120 feet and visibility Cat C and D 1/2 mile.

MALSR

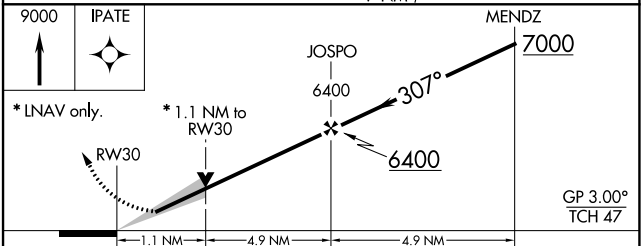
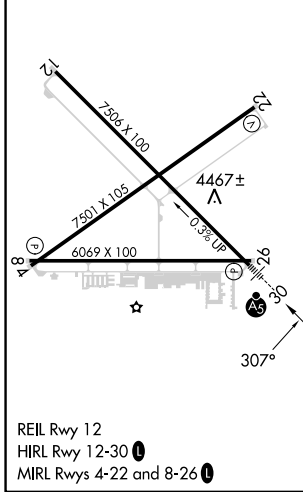


MISSED APPROACH: Climb to 9000 direct IPATE and hold, continue climb-in-hold to 9000.

AWOS-3 119.025	ALBUQUERQUE CENTER 128.2 285.5	UNICOM 122.7 (CTAF)
--------------------------	--	-------------------------------



ELEV 4457	D	TDZE 4444
------------------	----------	------------------



CATEGORY	A	B	C	D
LPV DA	4644-1/2		200 (200-1/2)	
LNAV/VNAV DA	4749-5/8		305 (300-5/8)	
LNAV MDA	4840-1/2 396 (400-1/2)		4840-5/8 396 (400-5/8)	
C CIRCLING	4900-1 443 (500-1)	5040-1 583 (600-1)	5320-2 1/2 863 (900-2 1/2)	5320-2 3/4 863 (900-2 3/4)

SW-1, 18 MAY 2023 to 15 JUN 2023

SW-1, 18 MAY 2023 to 15 JUN 2023