

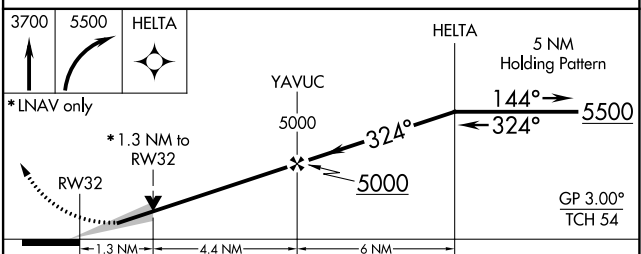
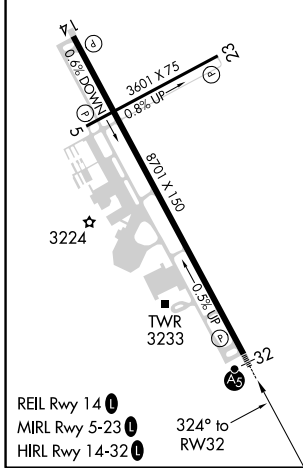
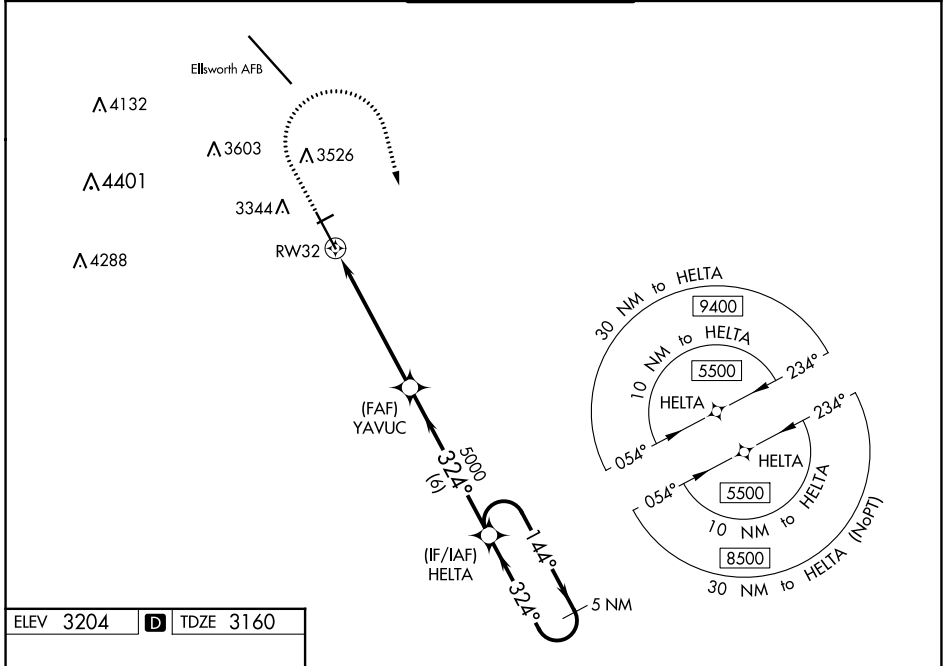
WAAS CH <b>93717</b> <b>W32A</b>	APP CRS <b>324°</b>	Rwy Idg TDZE Apt Elev	<b>8701</b> <b>3160</b> <b>3204</b>
--	------------------------	-----------------------------	---

# RNAV (GPS) RWY 32

RAPID CITY RGNL (R.A.P)

<p><b>⚠</b> For uncompensated Baro-VNAV systems, LNAV/VNAV NA below -24°C (-11°F) or above 51°C (125°F). DME/DME RNP-0.3 NA. For inop ALS, increase LPV Cat E visibility to RVR 4000, LNAV/VNAV all Cats to RVR 4500 and LNAV Cat E to 1 3/8 SM. # RVR 1800 authorized with use of FD or AP or HUD to DA.</p>	<p>MALSR</p>	<p>MISSED APPROACH: Climb to 3700 then climbing right turn to 5500 direct HELTA and hold.</p>

ASOS <b>118.525</b>	ELLSWORTH APP CON * <b>119.5 259.1</b>	RAPID CITY TOWER * <b>125.85 (CTAF) 0 257.8</b>	GND CON <b>121.9</b>	UNICOM <b>122.95</b>
------------------------	---	--	-------------------------	-------------------------



ELEV 3204	<b>D</b>	TDZE 3160																														
<table border="1"> <tr> <td>3700</td> <td>5500</td> <td>HELTA</td> </tr> </table>	3700	5500	HELTA																													
3700	5500	HELTA																														
* LNAV only																																
<table border="1"> <tr> <td>1.3 NM</td> <td>4.4 NM</td> <td>6 NM</td> </tr> </table>	1.3 NM	4.4 NM	6 NM																													
1.3 NM	4.4 NM	6 NM																														
<table border="1"> <tr> <th>CATEGORY</th> <th>A</th> <th>B</th> <th>C</th> <th>D</th> <th>E</th> </tr> <tr> <td>LPV DA#</td> <td colspan="2">3360/24</td> <td colspan="3">200 (200-1/2)</td> </tr> <tr> <td>LNAV/VNAV DA</td> <td colspan="2">3410/24</td> <td colspan="3">250 (300-1/2)</td> </tr> <tr> <td>LNAV MDA</td> <td colspan="2">3620/24</td> <td colspan="2">460 (500-1/2)</td> <td>3620/45 460 (500-3/8)</td> </tr> <tr> <td><b>C</b> CIRCLING</td> <td>3660-1 456 (500-1)</td> <td>3840-1 636 (700-1)</td> <td>3860-1 3/4 656 (700-1 3/4)</td> <td>3940-2 1/4 736 (800-2 1/4)</td> <td>3960-2 3/4 756 (800-2 3/4)</td> </tr> </table>	CATEGORY	A	B	C	D	E	LPV DA#	3360/24		200 (200-1/2)			LNAV/VNAV DA	3410/24		250 (300-1/2)			LNAV MDA	3620/24		460 (500-1/2)		3620/45 460 (500-3/8)	<b>C</b> CIRCLING	3660-1 456 (500-1)	3840-1 636 (700-1)	3860-1 3/4 656 (700-1 3/4)	3940-2 1/4 736 (800-2 1/4)	3960-2 3/4 756 (800-2 3/4)		
CATEGORY	A	B	C	D	E																											
LPV DA#	3360/24		200 (200-1/2)																													
LNAV/VNAV DA	3410/24		250 (300-1/2)																													
LNAV MDA	3620/24		460 (500-1/2)		3620/45 460 (500-3/8)																											
<b>C</b> CIRCLING	3660-1 456 (500-1)	3840-1 636 (700-1)	3860-1 3/4 656 (700-1 3/4)	3940-2 1/4 736 (800-2 1/4)	3960-2 3/4 756 (800-2 3/4)																											

NC-1, 18 MAY 2023 to 15 JUN 2023

NC-1, 18 MAY 2023 to 15 JUN 2023