

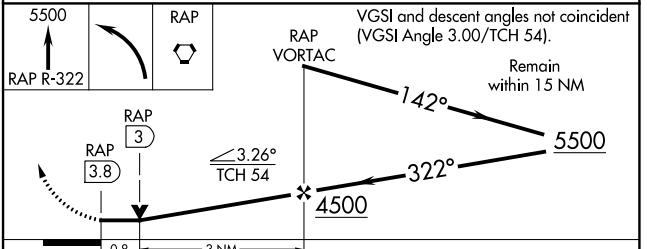
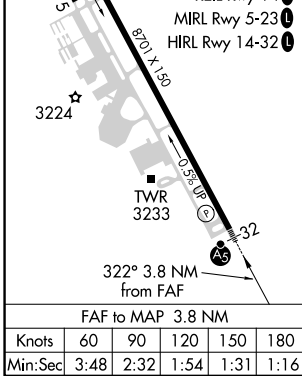
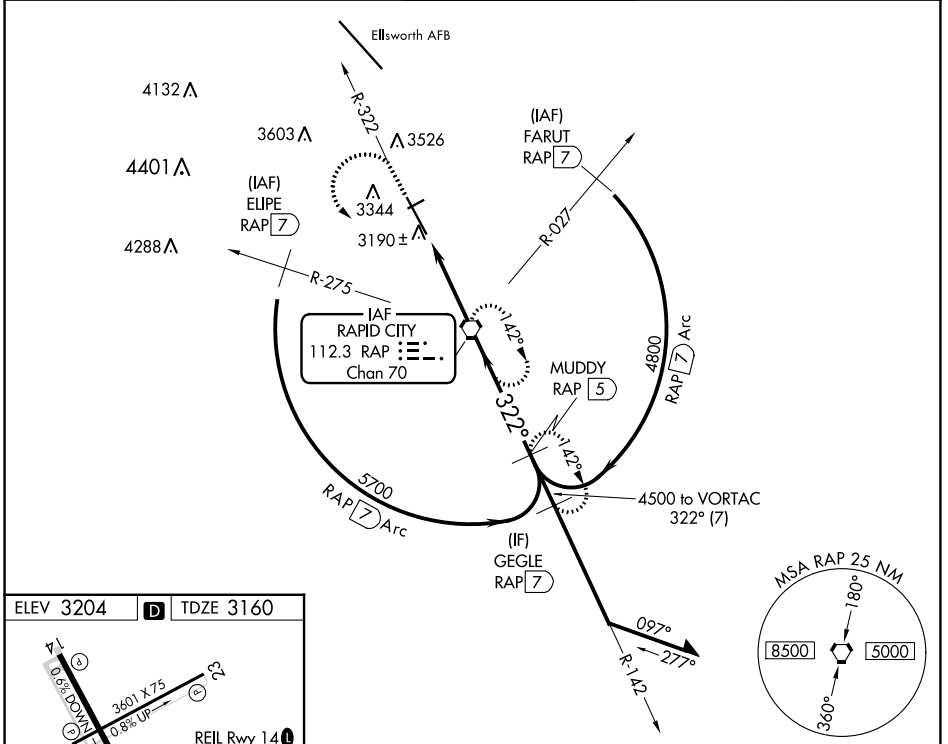
VORTAC RAP 112.3 Chan 70	APP CRS 322°	Rwy Idg 8701 TDZE 3160 Apt Elev 3204
--	------------------------	---

VOR or TACAN RWY 32

RAPID CITY RGNL (R.A.P)

<p>⚠</p> <p>For inoperative ALS, increase S-32 all Cats visibility to 1 SM.</p>	<p>MALSR</p>	<p>MISSED APPROACH: Climb to 5500 on RAP R-322 then left turn direct RAP VORTAC and hold. (TACAN aircraft continue on RAP R-142 to MUDDY/RAP 5 DME and hold SE, RT, 322° inbound.)</p>

ASOS 118.525	ELLSWORTH APP CON ★ 119.5 259.1	RAPID CITY TOWER ★ 125.85 (CTAF) 0 257.8	GND CON 121.9	UNICOM 122.95
------------------------	---	--	-------------------------	-------------------------



CATEGORY	A	B	C	D	E
S-32	3440/40 280 (300-¾)				
C CIRCLING	3660-1 456 (500-1)	3840-1 636 (700-1)	3860-1¾ 656 (700-1¾)	3940-2¼ 736 (700-2¼)	3960-2¾ 756 (800-2¾)

NC-1, 18 MAY 2023 to 15 JUN 2023

NC-1, 18 MAY 2023 to 15 JUN 2023