

(JAIKE.JAIKE4) 23110

AL-890 (FAA)

# JAIKE FOUR ARRIVAL (RNAV) Transition Routes

TETERBORO, NEW JERSEY

WASHINGTON CENTER  
 132.52  
 NEW YORK APP CON  
 132.8 379.9  
 PHILADELPHIA APP CON  
 124.35 319.15  
 CDW ATIS  
 135.5  
 MMU ATIS  
 124.25  
 TEB D-ATIS  
 114.2 132.85

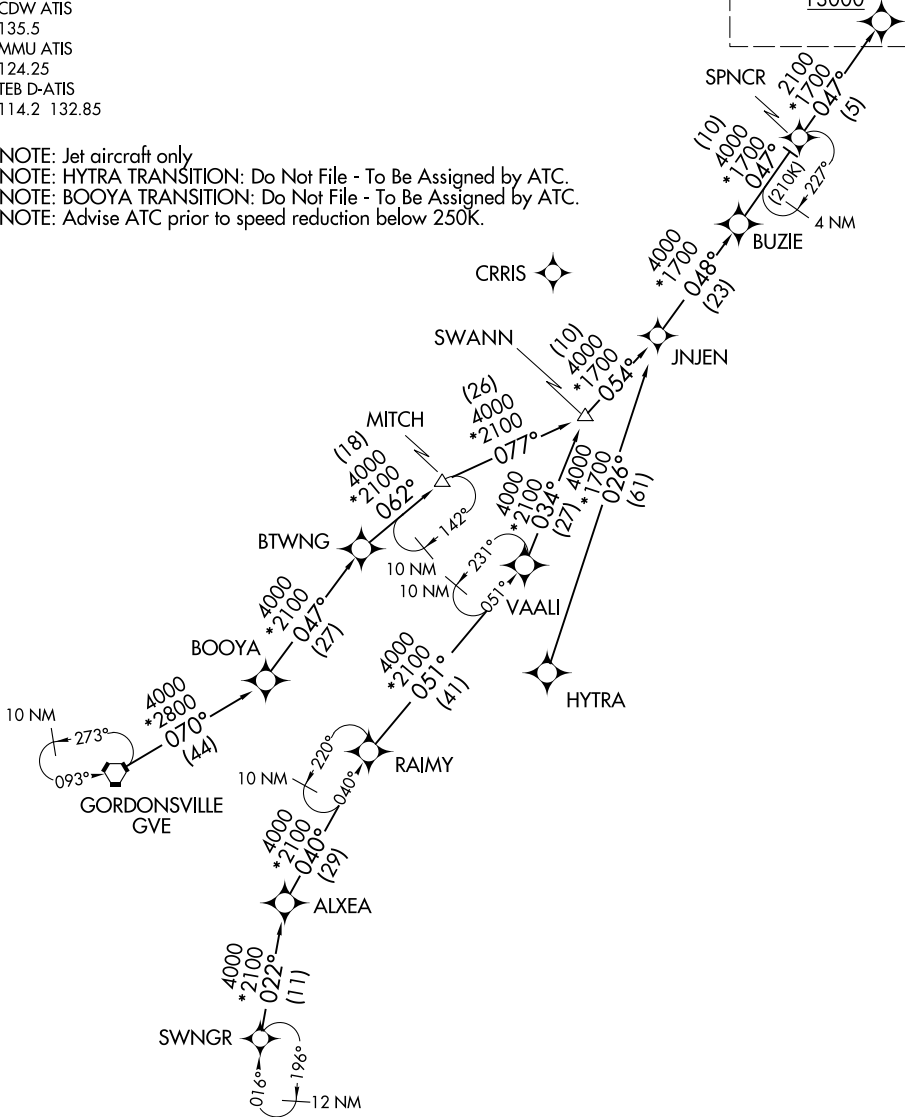
RNAV 1 - DME/DME/IRU or GPS.

RADAR required.

See following page for Arrival Routes.

JAIKE  
13000

NOTE: Jet aircraft only  
 NOTE: HYTRA TRANSITION: Do Not File - To Be Assigned by ATC.  
 NOTE: BOOYA TRANSITION: Do Not File - To Be Assigned by ATC.  
 NOTE: Advise ATC prior to speed reduction below 250K.



NE-2, 18 MAY 2023 to 15 JUN 2023

NE-2, 18 MAY 2023 to 15 JUN 2023

(CONTINUED ON FOLLOWING PAGE)

NOTE: Chart not to scale.

# JAIKE FOUR ARRIVAL (RNAV) Transition Routes

TETERBORO, NEW JERSEY

(JAIKE.JAIKE4) 20APR23