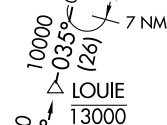
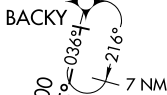
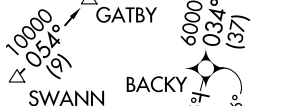
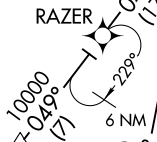
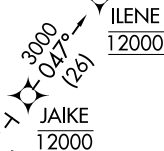
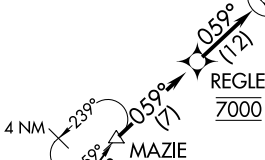
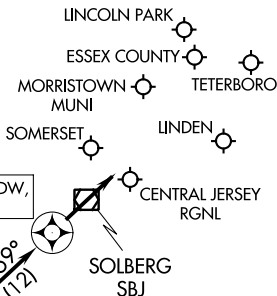


MAZIE THREE ARRIVAL (RNAV)

TETERBORO, NEW JERSEY

POTOMAC APP CON
 124.55 317.425
 PHILADELPHIA APP CON
 119.75 269.25
 NEW YORK APP CON
 132.8 379.9
 CDW ATIS
 135.5
 MMU ATIS
 124.25
 TEB D-ATIS
 114.2 132.85

GNNZO
 Ldg TEB, 47N, LDJ, CDW,
 MMU, N07, SMQ



- NOTE: RADAR required.
- NOTE: RNAV 1.
- NOTE: DME/DME/IRU or GPS required.
- NOTE: Turboprop aircraft only.

NOTE: Chart not to scale.

ARRIVAL ROUTE DESCRIPTION

SHLBK TRANSITION (SHLBK.MAZIE3)
SWANN TRANSITION (SWANN.MAZIE3)

LANDING ALL AIRPORTS: From MAZIE on track 059° to cross REGLE at 7000, then on track 059° to GNNZO, then on track 059°. Expect RADAR vectors to final approach course.

LOST COMMUNICATIONS: After REGLE at 7000', proceed direct GNNZO, cross GNNZO at 3000', proceed direct SBJ VOR/DME, then proceed with approach.

MAZIE THREE ARRIVAL (RNAV)

TETERBORO, NEW JERSEY