

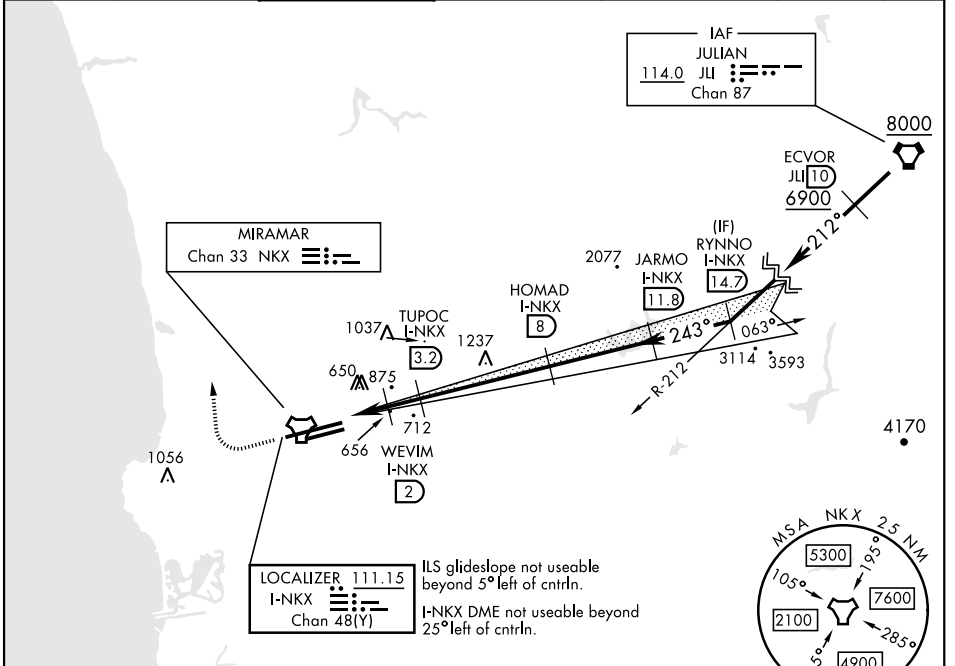
SAN DIEGO, CALIFORNIA

# ILS Z or LOC/DME Z RWY 24R

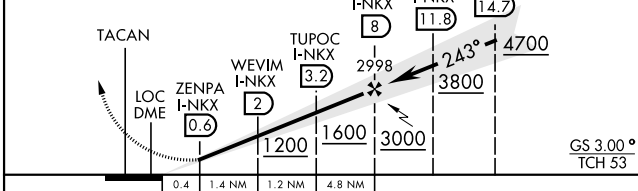
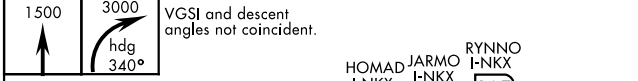
LOC/DME I-NKX <b>111.15</b> Chan <b>48(Y)</b>	APCH CRS <b>243°</b>	Rwy Ldg 8001	24L 24R <b>12,000</b>
		TDZE <b>477</b>	<b>475</b>
		Arpt Elev <b>477</b>	<b>477</b>

AL-903 [USN] MIRAMAR MCAS (JOE FOSS FLD) (KNKX)

DME and RADAR required.			MISSED APPROACH: Climb to 1500, then climbing right turn to 3000 via heading 340°. Expect radar vectors.			
<p>▼ * When ALS inop, increase vis to ¾ mile.          ** When ALS inop, increase CAT AB vis to 1 mile, CAT CDE vis to 1 ½ miles.          *** CAT E circling not authorized S of Rwy 6R-24L.</p>						
ATIS ★ <b>133.475</b> <b>352.0</b>	SOCAL APP CON <b>132.2</b> <b>269.1</b>	FOSS TOWER ★ <b>135.2</b> <b>298.925</b>	GND CON <b>128.625</b> <b>307.325</b>	CLNC DEL <b>125.975</b> <b>254.325</b>	LA CENTER <b>291.7</b>	ASR/ PAR

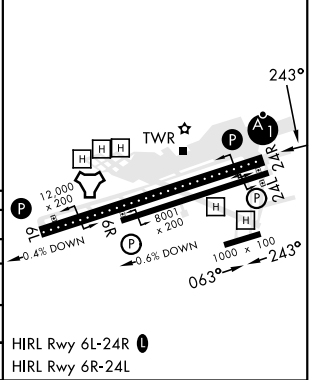


EMERG SAFE ALT 100 NM 13,600



ELEV	477	TDZE 24L	477
		TDZE 24R	475

CATEGORY	A	B	C	D	E
S-ILS 24R*	675 - ½		200	(200-½)	
S-LOC/DME 24R**	920-½	445 (500-½)	920-¾	445 (500-¾)	
SIDESTEP 24L	920-1	443 (500-1)	920-1½ 443 (500-1½)	920-2 443 (500-2)	
CIRCLING***	940-1 463 (500-1)	960-1 483 (500-1)	960-1½ 483 (500-1½)	1180-2¼ 703 (800-2¼)	1360-3 883 (900-3)



SAN DIEGO, CALIFORNIA 32°52'N-117°09'W MIRAMAR MCAS (JOE FOSS FLD) (KNKX)

Amdt 1 29DEC22

# ILS Z or LOC/DME Z RWY 24R

SW-3, 18 MAY 2023 to 15 JUN 2023

SW-3, 18 MAY 2023 to 15 JUN 2023