

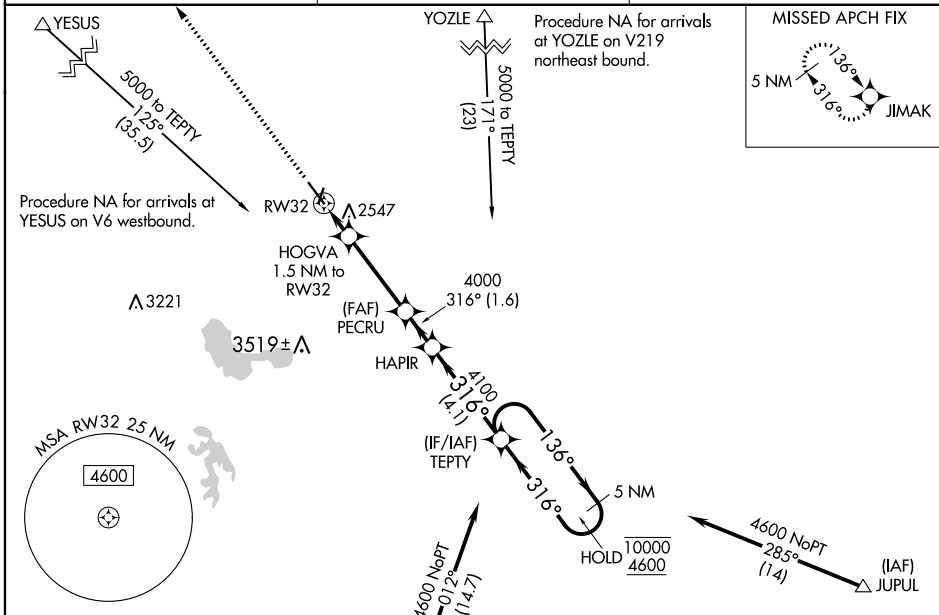
WAAS CH <b>49003</b> <b>W32A</b>	APP CRS <b>316°</b>	Rwy Idg TDZE <b>5489</b> <b>2408</b> Apt Elev <b>2413</b>
--	------------------------	--

# RNAV (GPS) RWY 32

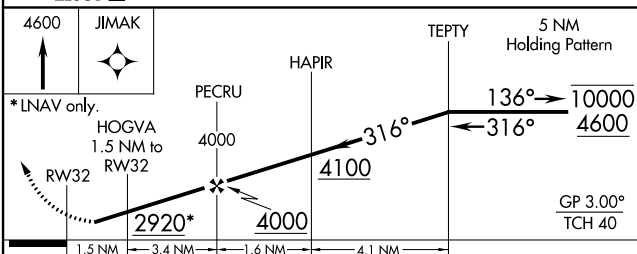
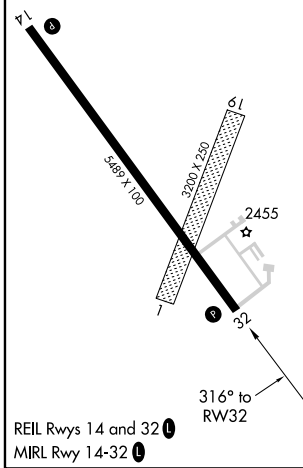
JIM KELLY FLD (LXN)

RNP APCH.	MISSED APPROACH: Climb to 4600 direct JIMAK and hold.
<p>▼ Circling NA to Rwys 1 and 19. Rwy 32 helicopter visibility reduction below 3/4 SM NA. For uncompensated Baro-VNAV systems, LNAV/VNAV NA below -21°C or above 54°C.</p> <p>▲</p>	

AWOS-3 <b>121.025</b>	DENVER CENTER <b>132.7 226.675</b>	UNICOM <b>123.0 (CTAF) 0</b>
--------------------------	---------------------------------------	---------------------------------



ELEV 2413	TDZE 2408
-----------	-----------



CATEGORY	A	B	C	D
LPV DA	2658-1		250 (300-1)	
LNAV/VNAV DA	2708-1		300 (300-1)	
LNAV MDA	2800-1 392 (400-1)		2800-1½ 392 (400-1½)	
CIRCLING	2860-1 447 (500-1)	2940-1 527 (600-1)	2940-1½ 527 (600-1½)	2980-2 567 (600-2)

NC-2, 18 MAY 2023 to 15 JUN 2023

NC-2, 18 MAY 2023 to 15 JUN 2023