

WAAS CH <b>53430</b> <b>W04A</b>	APP CRS <b>038°</b>	Rwy Idg <b>4000</b> TDZE <b>946</b> Apt Elev <b>946</b>
--	------------------------	---

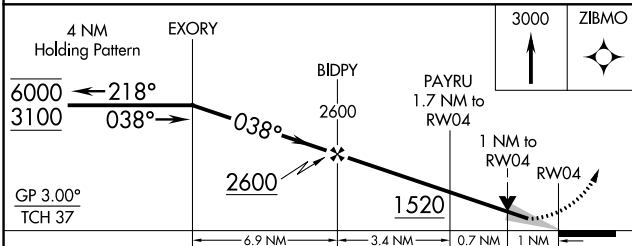
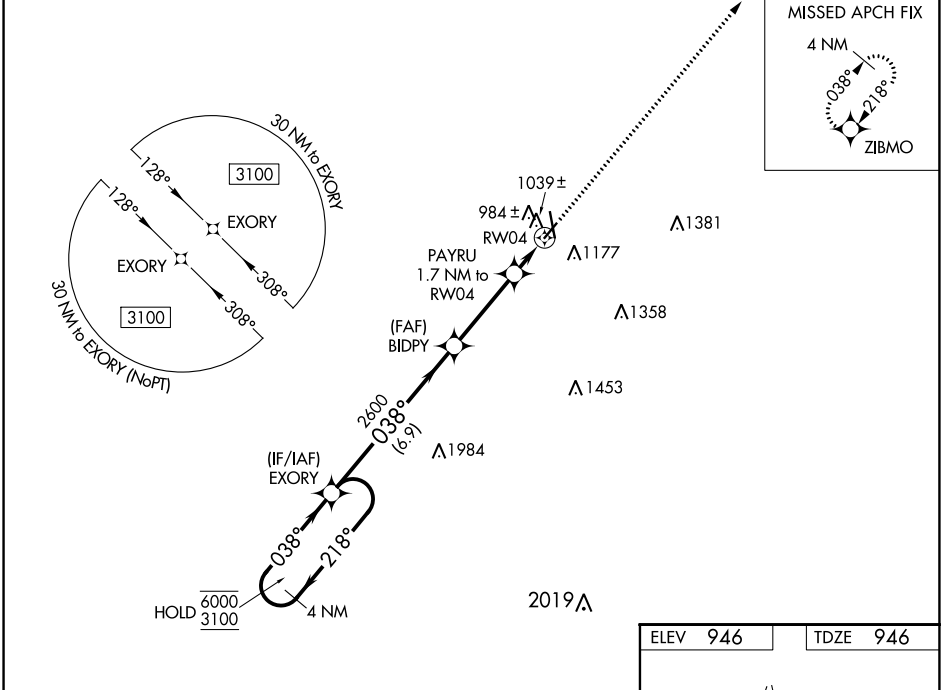
# RNAV (GPS) RWY 4

ATKINSON MUNI (PTS)

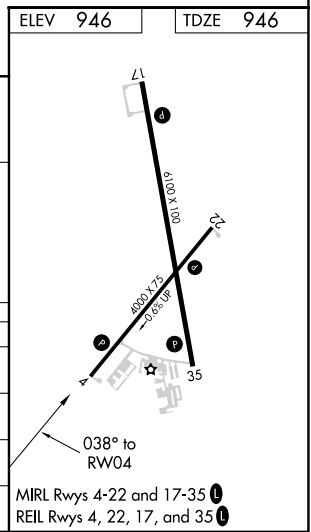
RNP APCH-GPS.  
 ▼ For uncompensated Baro-VNAV systems, LNAV/VNAV NA below -16°C or above 54°C.  
 ▲

MISSED APPROACH: Climb to 3000 direct ZIBMO and hold.

AWOS-3PT <b>118.775</b>	KANSAS CITY CENTER <b>128.6 282.325</b>	GCO <b>121.725</b>	UNICOM <b>123.0 (CTAF)</b>
----------------------------	--	-----------------------	-------------------------------



CATEGORY	A	B	C	D
LPV DA		1196-1 250 (300-1)		NA
LNAV/VNAV DA		1196-1 250 (300-1)		NA
LNAV MDA		1300-1 354 (400-1)		NA
<b>C</b> CIRCLING	1480-1 534 (600-1)		1520-1½ 574 (600-1½)	NA



NC-2, 18 MAY 2023 to 15 JUN 2023

NC-2, 18 MAY 2023 to 15 JUN 2023