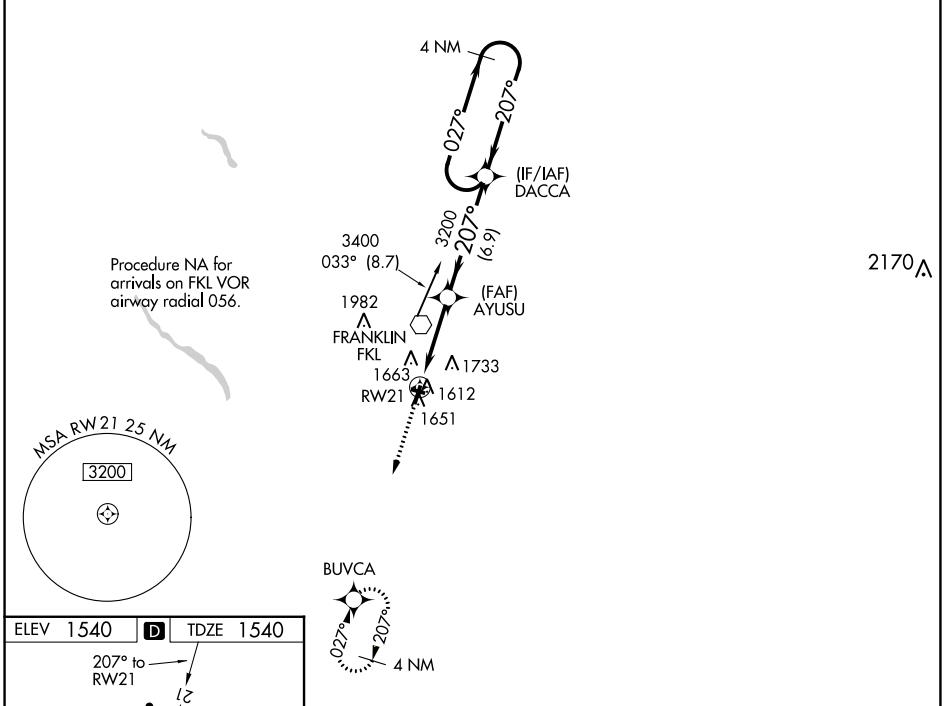


WAAS CH 77501 W21A	APP CRS 207°	Rwy Idg TDZE Apt Elev	5200 1540 1540
--	------------------------	-----------------------------	---

RNAV (GPS) RWY 21

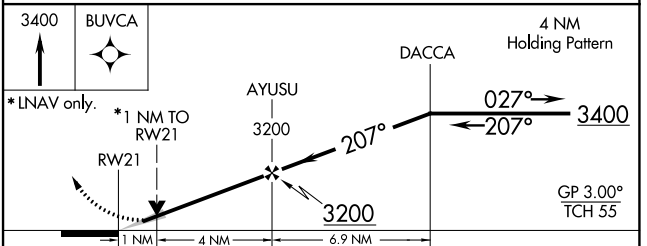
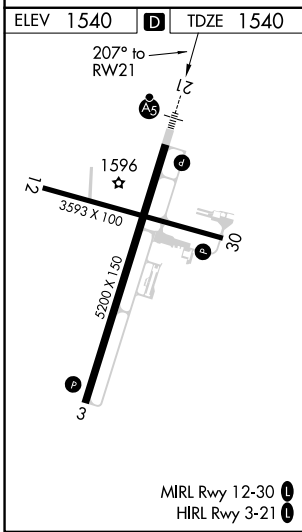
VENANGO RGNL (F'KL)

RNP APCH.		MALSR	MISSED APPROACH: Climb to 3400 direct BUVCA and hold.
<p>⚠ For uncompensated Baro-VNAV systems, LNAV/VNAV NA below -18°C (0°F) or above 45°C (114°F). Circling Rwy 12 NA at night. For inop ALS, increase LPV all Cats visibility to ½ SM and LNAV Cats C/D visibility to 1 SM.</p>			
AWOS-3PT 118.175	YOUNGSTOWN APP CON * 126.25 322.3	CLNC DEL 126.25	UNICOM 122.7 (CTAF) 0



NE-4, 18 MAY 2023 to 15 JUN 2023

NE-4, 18 MAY 2023 to 15 JUN 2023



CATEGORY	A	B	C	D
LPV DA		1803-½ 263 (300-½)		
LNAV/VNAV DA		1901-¾ 361 (400-¾)		
LNAV MDA	1900-½ 360 (400-½)		1900-⅝ 360 (400-⅝)	
CIRCLING	1960-1¼ 420 (500-1¼)	2000-1¼ 460 (500-1¼)	2040-1½ 500 (500-1½)	2100-2 560 (600-2)