

# HI-ILS or LOC Z RWY 30

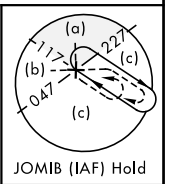
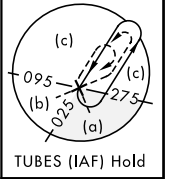
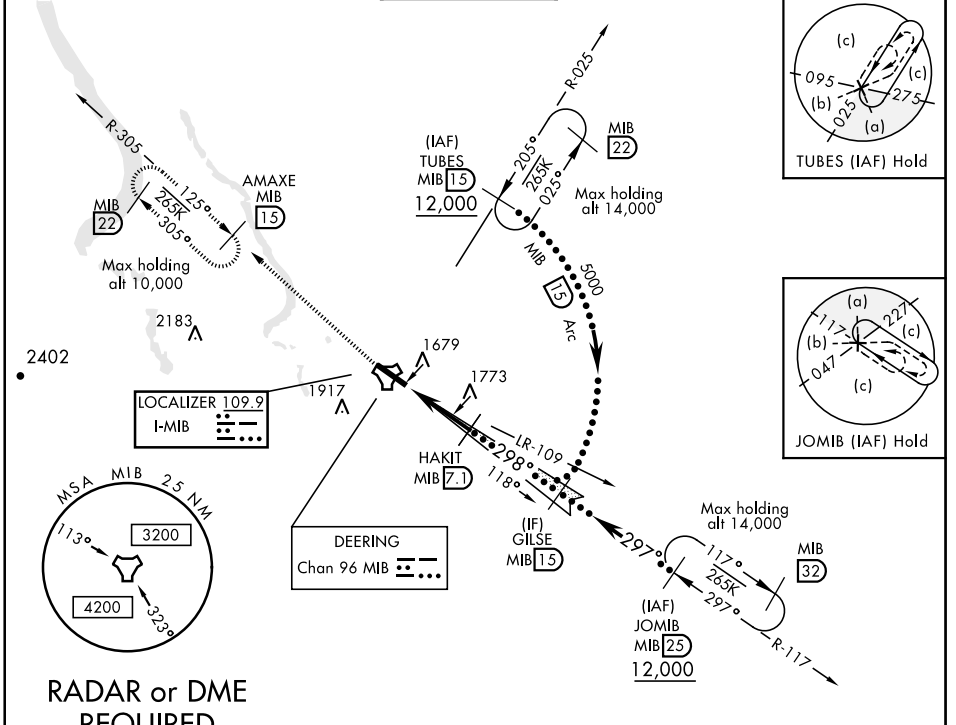
LOC I-MIB <b>109.9</b>	APCH CRS <b>298°</b>	Rwy Ldg <b>13,198</b> TDZE <b>1646</b> Arprt Elev <b>1666</b>	JAL-5013 [USAF]	MINOT AFB (KMIB)
---------------------------	-------------------------	---	-----------------	------------------

\* When ALS inop, increase CAT CDE RVR to 40 and vis to 3/4 mile.  
 \*\* When ALS inop, increase CAT CDE RVR to 60, vis to 1 1/2 mile,  
 \*\*\* Circling Not Authorized N of Rwy 12-30.

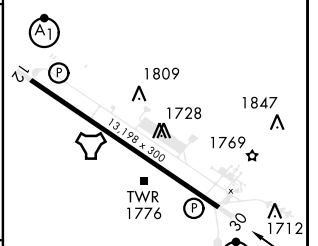
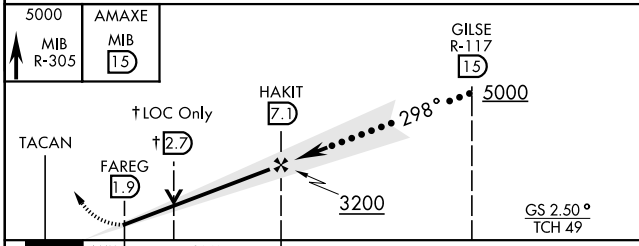


MISSED APPROACH: Climb to 5000 via MIB TACAN R-305 direct AMAXE and hold.

ATIS ★ <b>278.8</b>	MINOT APP CON <b>119.6 363.8</b>	MINOT TOWER ★ <b>120.65 253.5</b>	GND CON <b>134.0 275.8</b>	CLNC DEL <b>326.2</b>
------------------------	-------------------------------------	--------------------------------------	-------------------------------	--------------------------



ELEV 1666	TDZE 1646
-----------	-----------



CATEGORY	C	D	E
S-ILS 30*	1846/24	200 (200-1/2)	
S-LOC 30**	2040/35	394 (400-3/4)	
*** CIRCLING	2180-1 1/2 514 (600-1 1/2)	2220-2 554 (600-2)	

HIRL Rwy 12-30					
FAF to MAP 5.2 NM					
Knots	120	140	160	180	200
Min:Sec	2:36	2:14	1:57	1:44	1:34

# HI-ILS or LOC Z RWY 30

NC-1, 18 MAY 2023 to 15 JUN 2023

NC-1, 18 MAY 2023 to 15 JUN 2023