

# TACAN Y RWY 30

TACAN MIB Chan <b>96</b>	APCH CRS <b>292°</b>	Rwy Ldg <b>13,198</b> TDZE <b>1646</b> Arprt Elev <b>1666</b>
-----------------------------	-------------------------	---

AL-5013 [USAF]

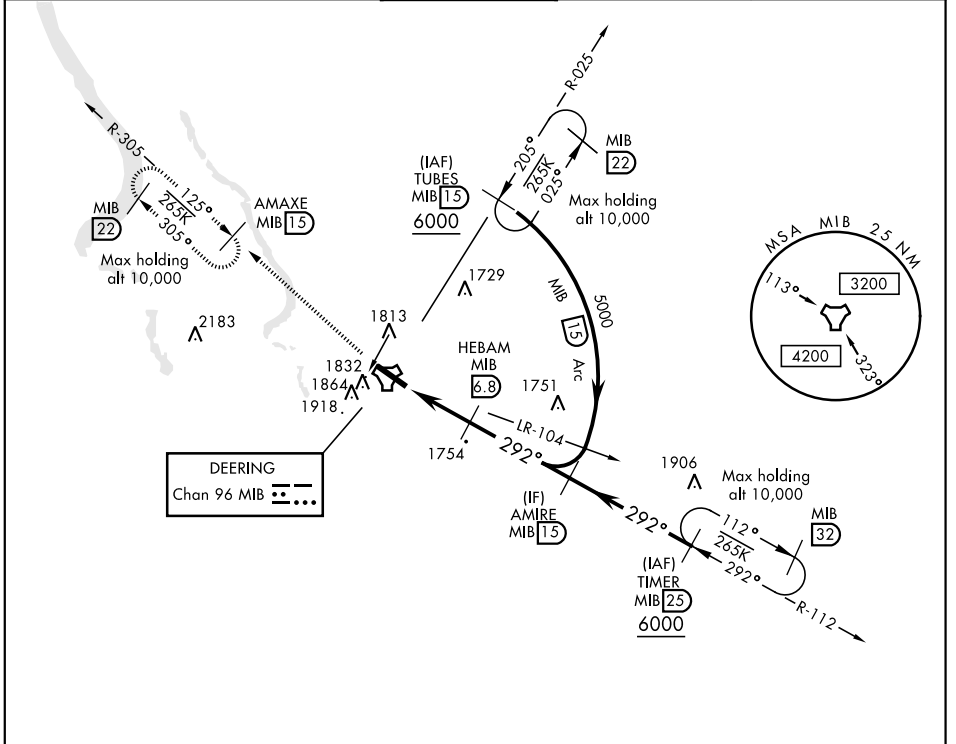
MINOT AFB (KMIB)

\* When ALS inop, increase CAT AB RVR to 55 and vis to 1 mile, CAT CDE vis to 1 3/8 miles.  
\*\* Circling not authorized N of Rwy 12-30



MISSED APPROACH: Climb to 5000 via MIB TACAN R-305 direct AMAXE and hold.

ATIS ★ <b>278.8</b>	MINOT APP CON <b>119.6 363.8</b>	MINOT TOWER ★ <b>120.65 253.5</b>	GND CON <b>134.0 275.8</b>	CLNC DEL <b>326.2</b>
------------------------	-------------------------------------	--------------------------------------	-------------------------------	--------------------------

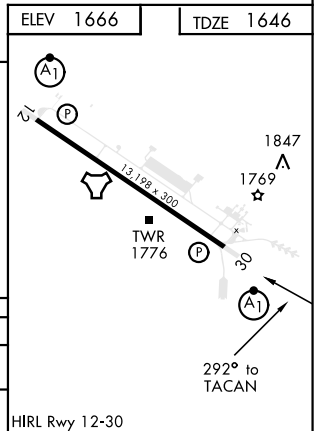


NC-1, 18 MAY 2023 to 15 JUN 2023

NC-1, 18 MAY 2023 to 15 JUN 2023

EMERG SAFE ALT 100 NM 4700

5000 MIB R-305	AMAXE MIB 15	HEBAM MIB 6.B	AMIRE R-112 MIB 15		
TACAN	GEVGE MIB 1.9				
5.0 NM		4.9 NM			
CATEGORY	A	B	C	D	E
S-30 *	2100/24	454 (500-1/2)	2100/45	454	(500-7/8)
CIRCLING **	2120-1 454 (500-1)	2140-1 474 (500-1)	2180-1 1/2 514 (600-1 1/2)	2220-2	554 (600-2)



# TACAN Y RWY 30