

WAAS CH 45627 W16A	APP CRS 161°	Rwy Idg TDZE Apt Elev	5001 643 647
--	------------------------	-----------------------------	---

RNAV (GPS) RWY 16

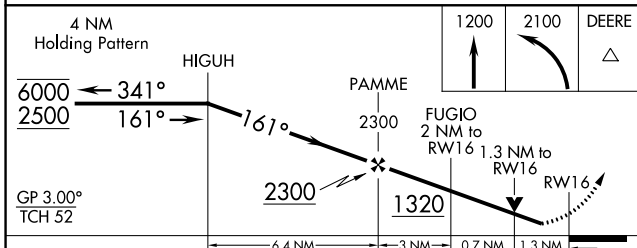
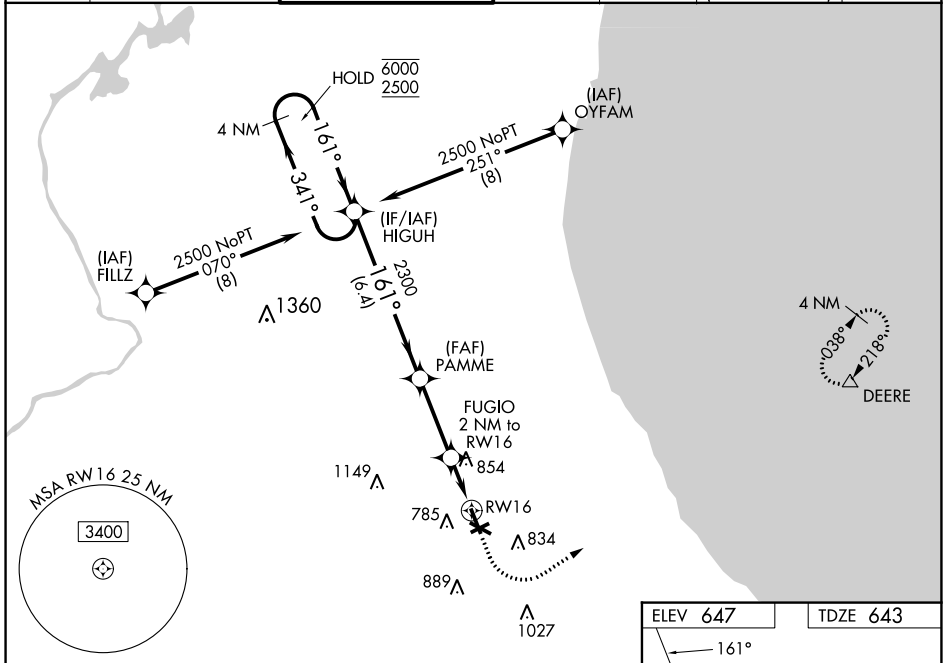
CHICAGO EXEC (PWK)

RNP APCH - GPS.

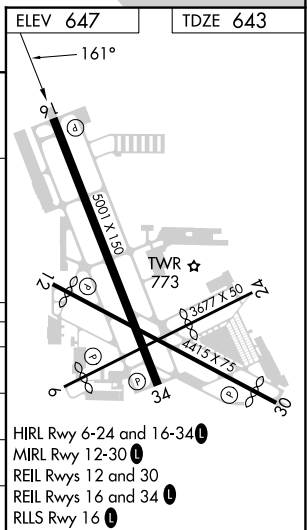
⚠ Circling Rwy 6, 12, 24, 30 NA at night.
⚠ Rwy 16 helicopter visibility reduction below ¾ SM NA.
 For uncompensated Baro-VNAV systems, LNAV/VNAV NA below -19°C or above 54°C.

MISSED APPROACH: Climb to 1200 then climbing left turn to 2100 direct DEERE and hold.

ATIS 124.2	CHICAGO APP CON 120.55 306.925	EXECUTIVE TOWER ★ 119.9 (CTAF) 0	GND CON 121.7	CLNC DEL 124.7	CLNC DEL 124.7 (When twr closed)	UNICOM 122.95
----------------------	--	--	-------------------------	--------------------------	---	-------------------------



CATEGORY	A	B	C	D
LPV DA		927-7/8	284 (300-7/8)	
LNAV/VNAV DA		1083-1¼	440 (500-1¼)	
LNAV MDA	1120-1	477 (500-1)	1120-1¾	477 (500-1¾)
C CIRCLING	1140-1 493 (500-1)	1160-1 513 (600-1)	1200-1½ 553 (600-1½)	1460-2¾ 813 (900-2¾)



EC-3, 18 MAY 2023 to 15 JUN 2023

EC-3, 18 MAY 2023 to 15 JUN 2023