

WAAS CH <b>99731</b> <b>W27A</b>	APP CRS <b>270°</b>	Rwy Idg TDZE Apt Elev	<b>4505</b> <b>91</b> <b>107</b>
--	------------------------	-----------------------------	--

# RNAV (GPS) RWY 27

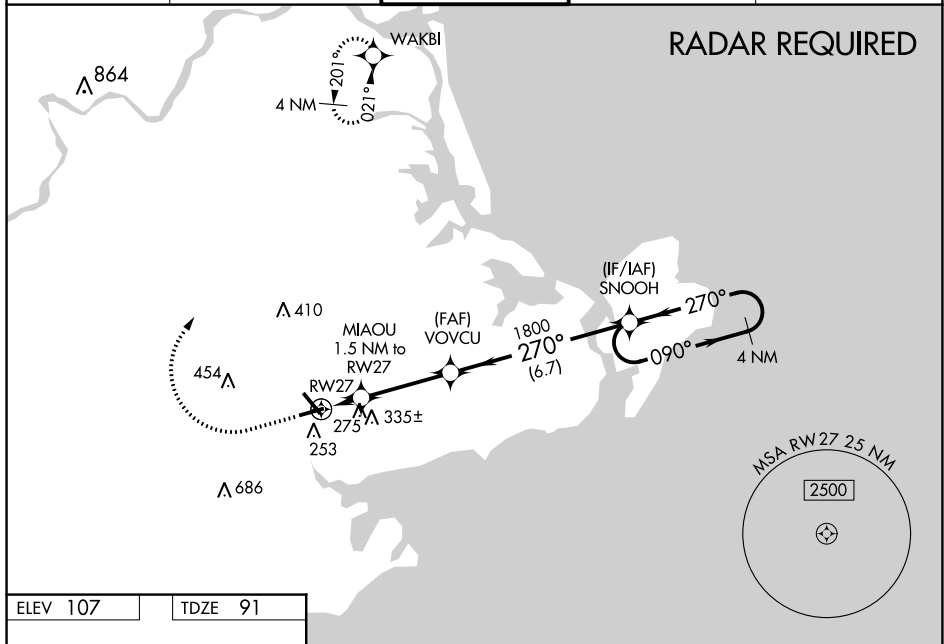
BEVERLY RGNL (BVY)

RNP APCH

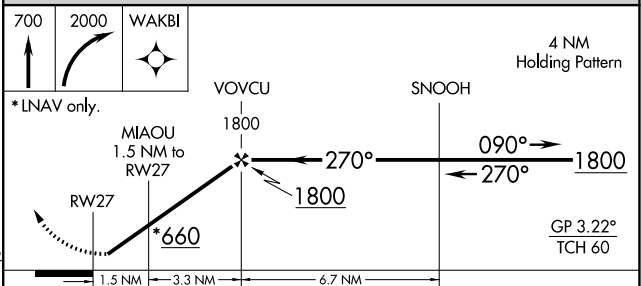
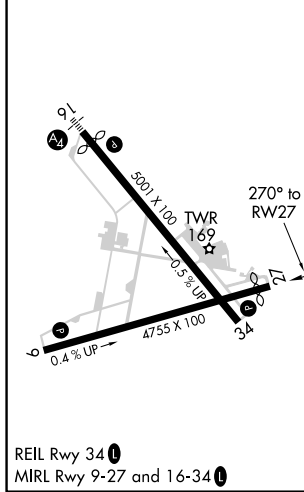
**⚠** Baro-VNAV NA when using Lawrance altimeter setting. For uncompensated Baro-VNAV systems, LNAV/VNAV NA below -21°C (-5°F) or above 54°C (130°F). When local altimeter setting not received, use Lawrance altimeter setting: increase LPV DA to 478 and LNAV/VNAV DA to 472 and all MDA 40 feet; increase LPV all Cats visibility and LNAV/VNAV all Cats visibility ½ SM, and increase Circling Cat C and D visibility ¼ SM. Circling Rwy 9 NA at night. Rwy 27 helicopter visibility reduction below ¾ SM NA.

**MISSED APPROACH:**  
Climb to 700 then climbing right turn to 2000 direct WAKBI and hold.

ATIS <b>119.2</b>	BOSTON APP CON <b>124.4 279.6</b>	BEVERLY TOWER★ <b>125.2 (CTAF) 0</b>	GND CON <b>121.6</b>	UNICOM <b>122.95</b>
----------------------	--------------------------------------	---	-------------------------	-------------------------



ELEV 107	TDZE 91
----------	---------



CATEGORY	A	B	C	D
LPV DA	444-1	353 (400-1)		NA
LNAV/VNAV DA	438-1	347 (400-1)		NA
LNAV MDA	540-1	449 (500-1)	540-1⅓, 449 (500-1⅓)	
<b>C</b> CIRCLING	600-1	493 (500-1)	820-2, 713 (800-2)	880-2½, 773 (800-2½)

NE-1, 18 MAY 2023 to 15 JUN 2023

NE-1, 18 MAY 2023 to 15 JUN 2023