

WAAS CH <b>65640</b> <b>W09A</b>	APP CRS <b>105°</b>	Rwy Idg TDZE <b>86</b> Apt Elev <b>107</b>	<b>4755</b>
--	------------------------	--	-------------

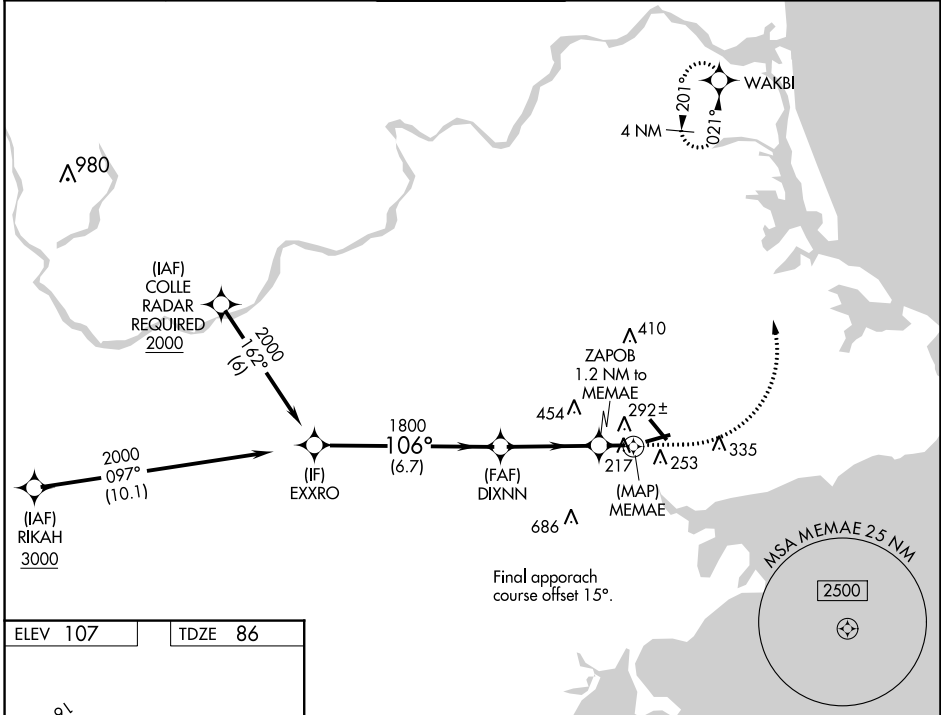
# RNAV (GPS) RWY 9

BEVERLY RGNL (BVY)

**⚠** DME/DME RNP-0.3 NA. When local altimeter setting not received, use Lawrence altimeter setting and increase all MDA 40 feet, increase Cat C and D visibility ¼ mile.  
**⚠** Straight-in Rwy 9 NA at night, Circling Rwy 9 NA at night. Rwy 9 helicopter visibility reduction below 1 SM NA.

**MISSED APPROACH:** Climb to 500 then climbing left turn to 2000 direct WAKBI and hold.

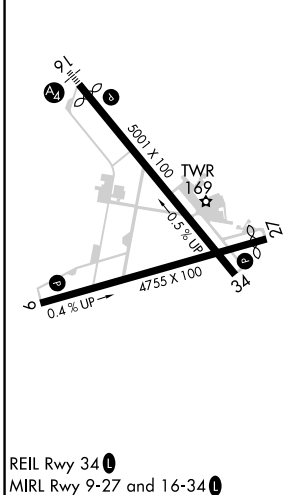
ATIS <b>119.2</b>	BOSTON APP CON <b>124.4 279.6</b>	BEVERLY TOWER★ <b>125.2 (CTAF) 0</b>	GND CON <b>121.6</b>	UNICOM <b>122.95</b>
----------------------	--------------------------------------	---	-------------------------	-------------------------



NE-1, 18 MAY 2023 to 15 JUN 2023

NE-1, 18 MAY 2023 to 15 JUN 2023

ELEV 107	TDZE 86
----------	---------



REIL Rwy 34 **0**  
MIRL Rwy 9-27 and 16-34 **0**

	500	2000	WAKBI
	↑	↶	✦
EXXRO	DIXINN		
2000	1800	680	MEMAE
	106°	105°	
	6.7 NM	3.5 NM	1.2 NM 0.6
	ZAPOB 1.2 NM to MEMAE		
	3.00° TCH 55		
CATEGORY	A	B	C D
LP MDA	480-1	394 (400-1)	480-1½ 394 (400-1½)
LNAV MDA	560-1	474 (500-1)	560-1¾ 474 (500-1¾)
<b>C</b> CIRCLING	680-1	573 (600-1)	820-2 880-2½ 713 (800-2) 773 (800-2½)