

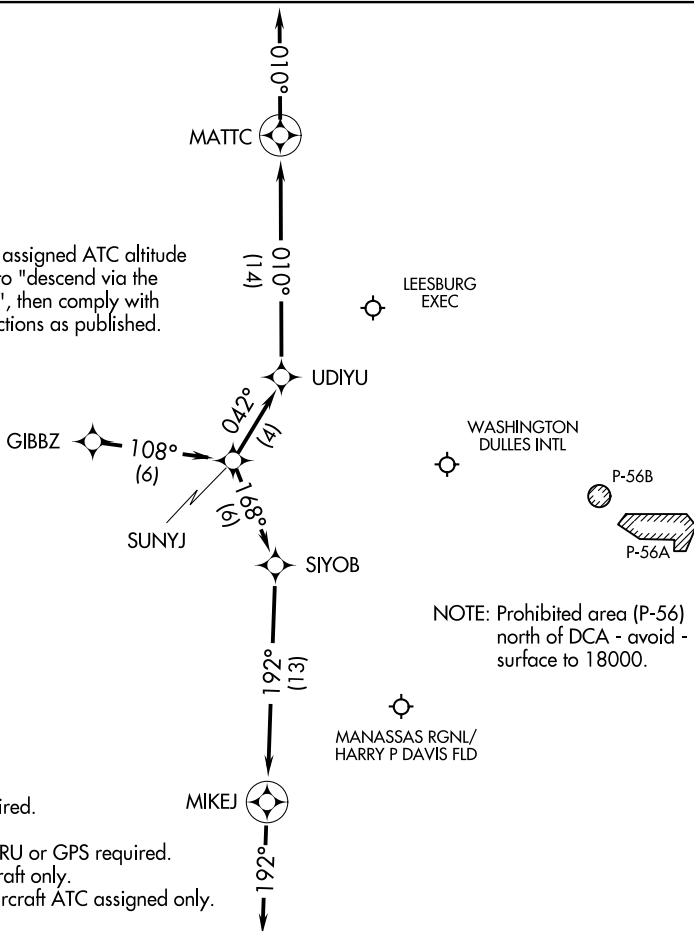
AL-5100 (FAA)

## GIBBZ FOUR ARRIVAL (RNAV) Arrival Routes

WASHINGTON, DC

POTOMAC APP CON  
120.45 306.925  
HEF ATIS  
125.175  
IAD D-ATIS  
134.85

NOTE: Maintain last assigned ATC altitude until cleared to "descend via the GIBBZ FOUR", then comply with altitude restrictions as published.



NOTE: RADAR required. MIK  
NOTE: RNAV 1.  
NOTE: DME/DME/IRU or GPS required.  
NOTE: Turbojet aircraft only.  
NOTE: Turboprop aircraft ATC assigned only.

NOTE: Chart not to scale.

## ARRIVAL ROUTE DESCRIPTION

LANDING RUNWAYS 1L/C/R, 30: From GIBBZ on track 108° to SUNYJ, then on track 168° to SIYOB, then on track 192° to MIKEJ, then on track 192°. Expect radar vectors to final approach course.

LANDING RUNWAYS 19L/C/R: From GIBBZ on track 108° to SUNYJ, then on track 042° to UDIYU, then on track 010° to MATTC, then on track 010°. Expect radar vectors to final approach course.

## GIBB7 FOUR ARRIVAL (RNAV) Arrival Routes

WASHINGTON, DC

(GIBBZ.GIBBZ4) 31DEC20

NE-3, 18 MAY 2023 to 15 JUN 2023