

APP CRS	Rwy Idg	<b>4421</b>
<b>315°</b>	TDZE	<b>667</b>
	Apt Elev	<b>674</b>

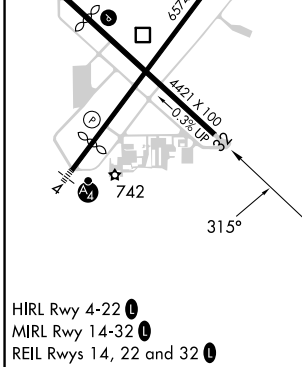
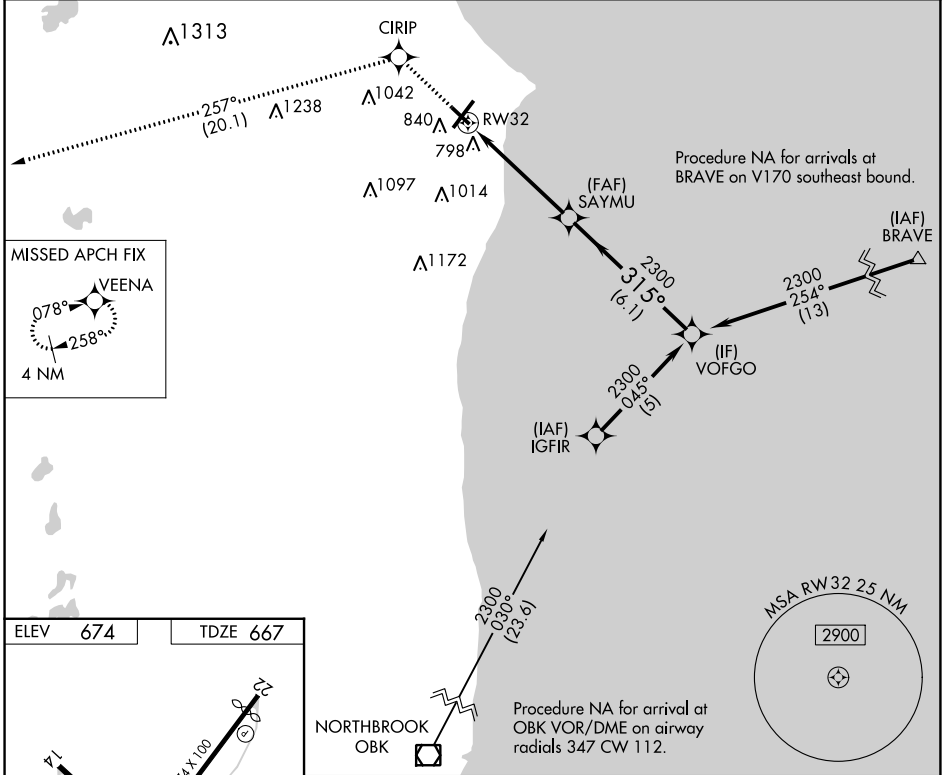
# RNAV (GPS) RWY 32

BATTEN INTL (RAC)

**▼** DME/DME RNP-0.3 NA. VDP NA when using General Mitchell Intl altimeter setting.  
**▲** When local altimeter setting not received, use General Mitchell Intl altimeter setting:  
 Increase all MDA 40 feet and visibility Cat C and D ¼ SM. Rwy 32 helicopter  
 visibility reduction below ¾ SM NA. Circling Rwy 14 NA at night.

**MISSED APPROACH:**  
 Climb to 3000 direct  
 CIRIP and track 257°  
 to VEENA and hold.

ASOS <b>121.425</b>	MILWAUKEE APP CON <b>135.875 317.725</b>	CLNC DEL <b>120.15</b>	UNICOM <b>123.075 (CTAF) 0</b>
------------------------	---	---------------------------	-----------------------------------



3000	CIRIP	VEENA	SAYMU		VOFGO	
↑	✧	tr 257° ✧				
	1.1 NM to RW32		315°		2300	
	RW32		2300			
	1.1 NM		3.9 NM		6.1 NM	
	≤ 3.04° TCH 40					
CATEGORY	A		B		C	
LNAV MDA	1060-1		393 (400-1)		1060-1½ 393 (400-1½)	
<input checked="" type="checkbox"/> CIRCLING	1140-1 466 (500-1)		1160-1 486 (500-1)		1380-2 706 (800-2)	
					1380-2¼ 706 (800-2¼)	

EC-3, 18 MAY 2023 to 15 JUN 2023

EC-3, 18 MAY 2023 to 15 JUN 2023