

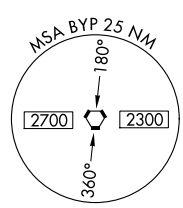
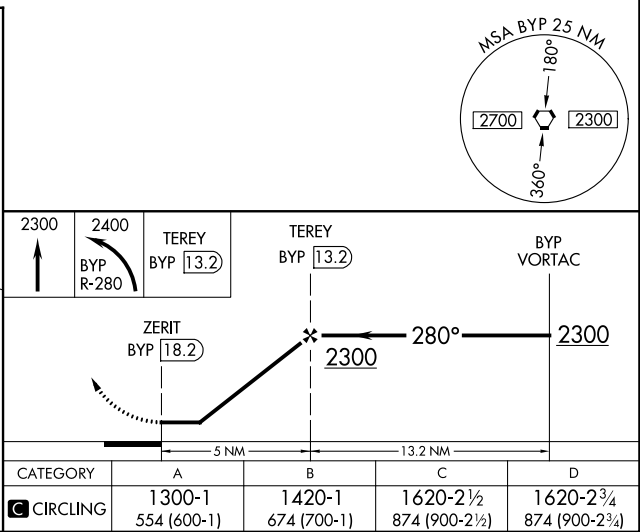
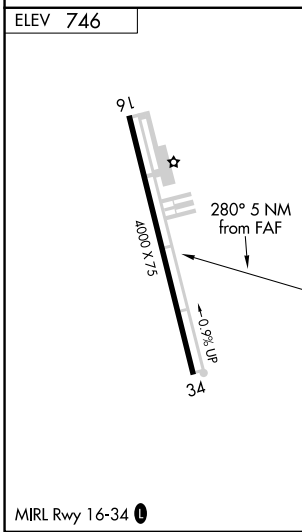
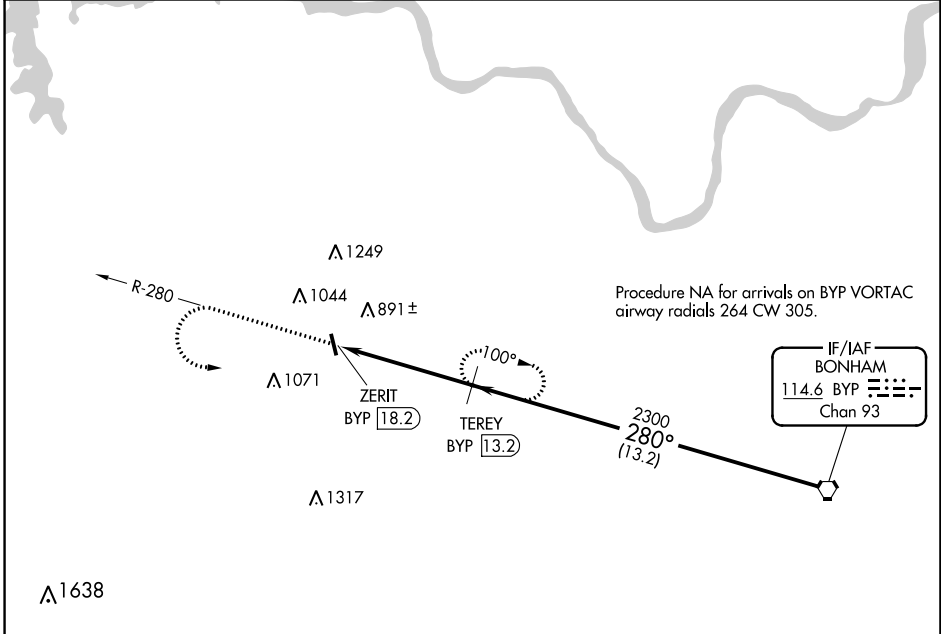
VORTAC BYP 114.6 Chan 93	APP CRS 280°	Rwy Idg TDZE Apt Elev	N/A N/A 746
--	------------------------	-----------------------------	--

VOR/DME-A
SHERMAN MUNI (SWI)

Use Sherman/Denison altimeter setting, when not received, use Dallas Love Fld altimeter setting and increase all MDA 140 feet, increase visibility Cat B ¼ mile, Cat C ½ mile, and Cat D ¾ mile. Procedure NA at night. Helicopter visibility reduction below 1 SM NA.

MISSED APPROACH: Climb to 2300, then climbing left turn to 2400 on BYP R-280 to TEREY/13.2 DME and hold.

FORT WORTH CENTER 124.75 323.0	UNICOM 122.8 (CTAF) 0
--	---------------------------------



SC-2, 18 MAY 2023 to 15 JUN 2023

SC-2, 18 MAY 2023 to 15 JUN 2023