

| | | |
|---------------------------------|------------------------|---|
| WAAS CH 86610 W30A | APP CRS 304° | Rwy Idg 4001 TDZE 1024 Apt Elev 1024 |
|---------------------------------|------------------------|---|

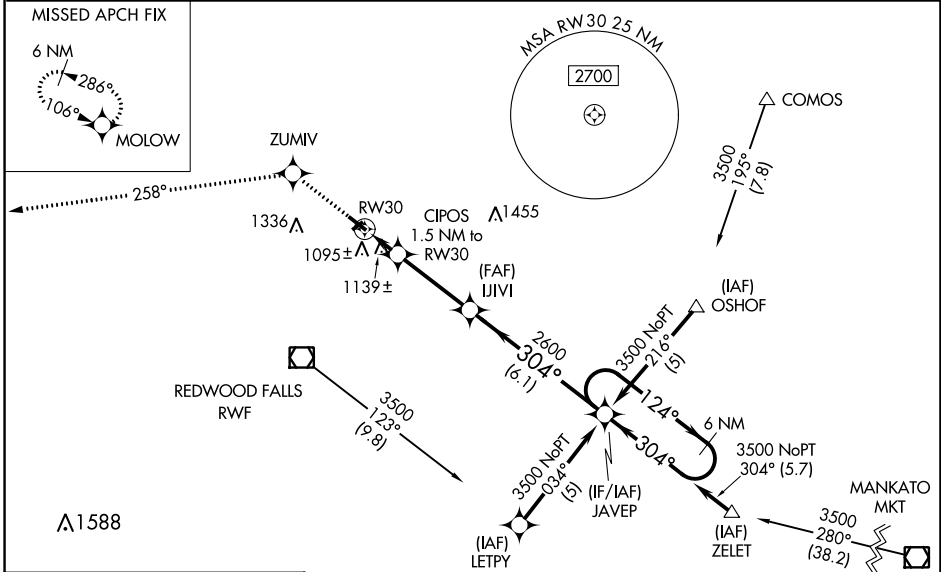
RNAV (GPS) RWY 30

REDWOOD FALLS MUNI (RWF)

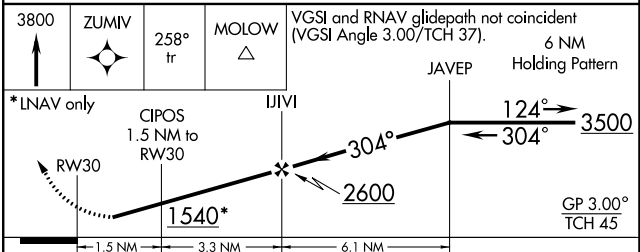
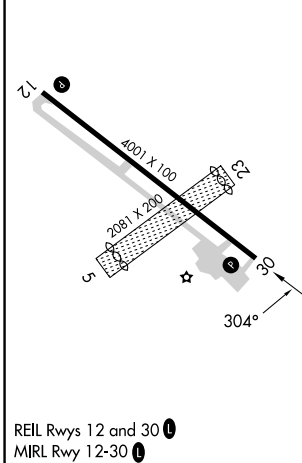
⚠ DME/DME RNP-0.3 NA. Visibility reduction by helicopters NA.
 For uncompensated Baro-VNAV systems, LNAV/VNAV NA below -17°C (2°F) or above 46°C (114°F).
⚠ Baro-VNAV NA when using Olivia Rgnl altimeter setting.
 When local altimeter setting not received, use Olivia Rgnl altimeter setting and increase all DA/MDA 40 feet and LNAV Cat C visibility ¼ mile.

MISSED APPROACH: Climb to 3800 direct ZUMIV and via 258° track to MOLOW and hold.

| | | |
|------------------------|--|---------------------------------|
| ASOS 126.575 | MINNEAPOLIS CENTER 127.1 290.2 | UNICOM 123.0 (CTAF) 0 |
|------------------------|--|---------------------------------|



| | |
|-----------|-----------|
| ELEV 1024 | TDZE 1024 |
|-----------|-----------|



| CATEGORY | A | B | C | D |
|--------------|-------------|-------------|-------------|--------------|
| LPV DA | 1304-1 | | | 280 (300-1) |
| LNAV/VNAV DA | 1440-1½ | | | 416 (500-1½) |
| LNAV MDA | 1400-1 | | | 376 (400-1) |
| CIRCLING | 1480-1 | 1660-1 | 1700-2 | 1700-2½ |
| | 456 (500-1) | 636 (700-1) | 676 (700-2) | 676 (700-2½) |