

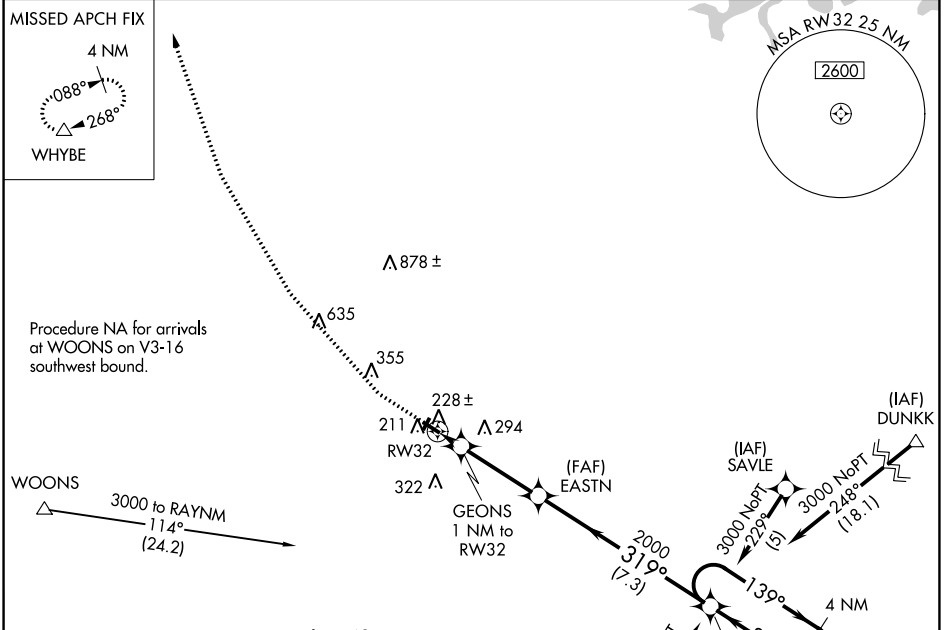
WAAS CH 97644 W32A	APP CRS 319°	Rwy Idg TDZE Apt Elev	3263 121 123
--	------------------------	-----------------------------	---

RNAV (GPS) RWY 32

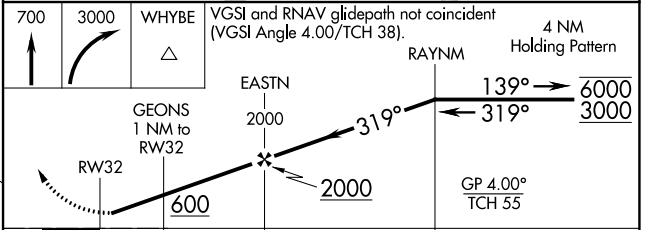
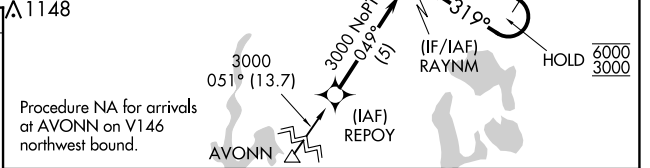
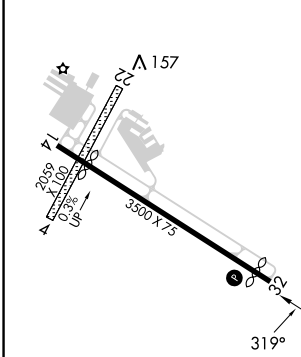
MANSFIELD MUNI (1B9)

RNP APCH - GPS.		MISSED APPROACH: Climb to 700 then climbing right turn to 3000 direct WHYBE and hold.
NA	Circling NA to Rwy 4 and 22. Procedure NA at night. Rwy 32 helicopter visibility reduction below 1 SM NA. Use Taunton altimeter setting.	

TAN ASOS 132.675	BOSTON APP CON 124.1	UNICOM 123.0 (CTAF) 0
----------------------------	--------------------------------	---------------------------------



ELEV 123	TDZE 121
----------	----------



CATEGORY	A	B	C	D
LPV DA	452-1	331 (400-1)		NA
LNNAV MDA	520-1	399 (400-1)		NA
CIRCLING	600-1 477 (500-1)	640-1 517 (600-1)		NA

NE-1, 18 MAY 2023 to 15 JUN 2023

NE-1, 18 MAY 2023 to 15 JUN 2023