

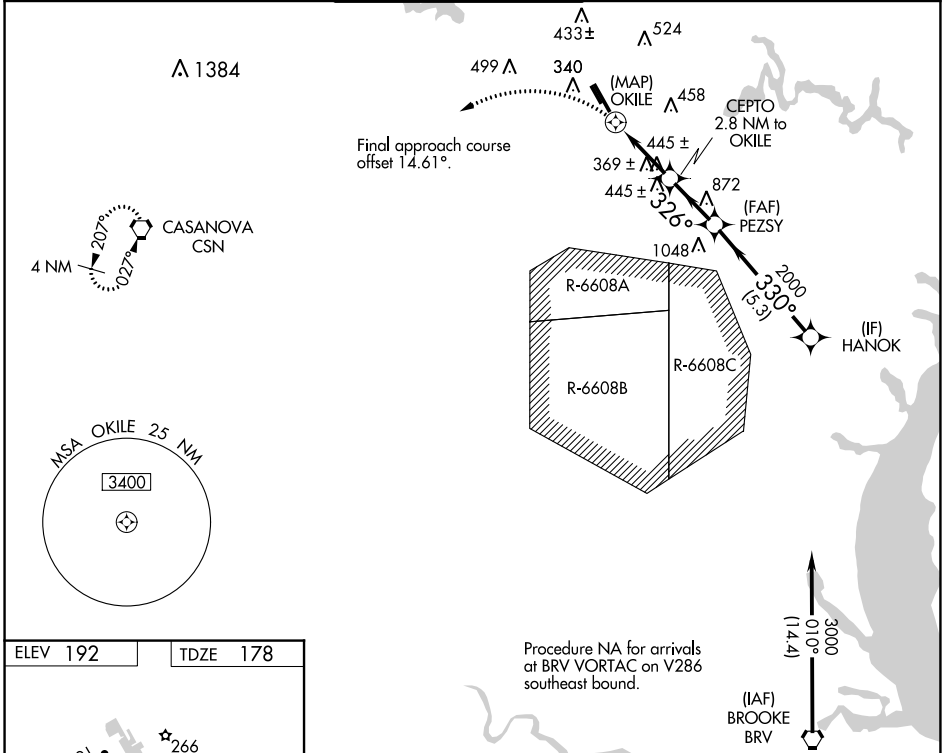
WAAS CH 63130 W34A	APP CRS 326°	Rwy Idg TDZE Apt Elev	6200 178 192
--	------------------------	-----------------------------	---

RNAV (GPS) RWY 34R

MANASSAS RGNL/HARRY P DAVIS FLD (HEF)

RNP APCH.	MALSF	MISSED APPROACH: Climbing left turn to 3000 direct CSN VORTAC and hold.
▼ Rwy 34R helicopter visibility reduction below 3/4 SM NA. For inop ALS, increase LP and LNAV Cats C/D visibility to 1 3/8 SM.		

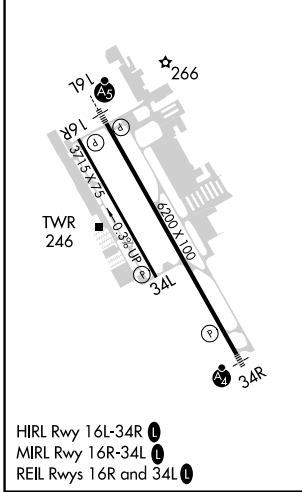
ATIS 125.175	POTOMAC APP CON 128.525 306.925	MANASSAS TOWER * 133.1 (CTAF) 0 360.75	GND CON 121.8	CLNC DEL 120.2	CLNC DEL 120.2 (When twr closed)
------------------------	---	--	-------------------------	--------------------------	---



NE-3, 18 MAY 2023 to 15 JUN 2023

NE-3, 18 MAY 2023 to 15 JUN 2023

ELEV 192	TDZE 178
----------	----------



3000	CSN	HANOK	
OKILE		CEPTO 2.8 NM to OKILE	PEZSY
1 NM to OKILE		326°	330°
1260		2000	3000
0.5		1 NM	1.8 NM
CATEGORY		A	B
LP		MDA	620-1 442 (500-1)
LNAV MDA		640-1 462 (500-1)	640-1 3/8 462 (500-1 1/8)
CIRCLING		700-1 508 (600-1)	740-1 548 (600-1) 840-1 3/4 648 (700-1 3/4) 920-2 1/4 728 (800-2 1/4)