

WAAS CH <b>53418</b> <b>W20A</b>	APP CRS <b>197°</b>	Rwy Idg TDZE <b>372</b> Apt Elev <b>372</b>	<b>6483</b>
--	------------------------	---	-------------

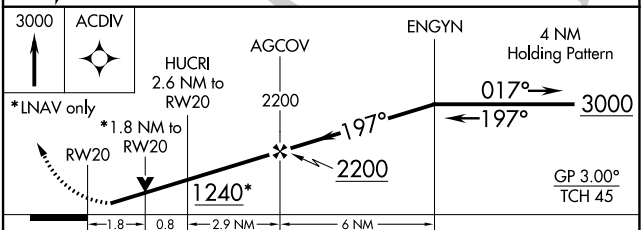
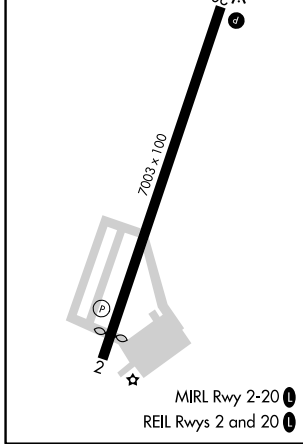
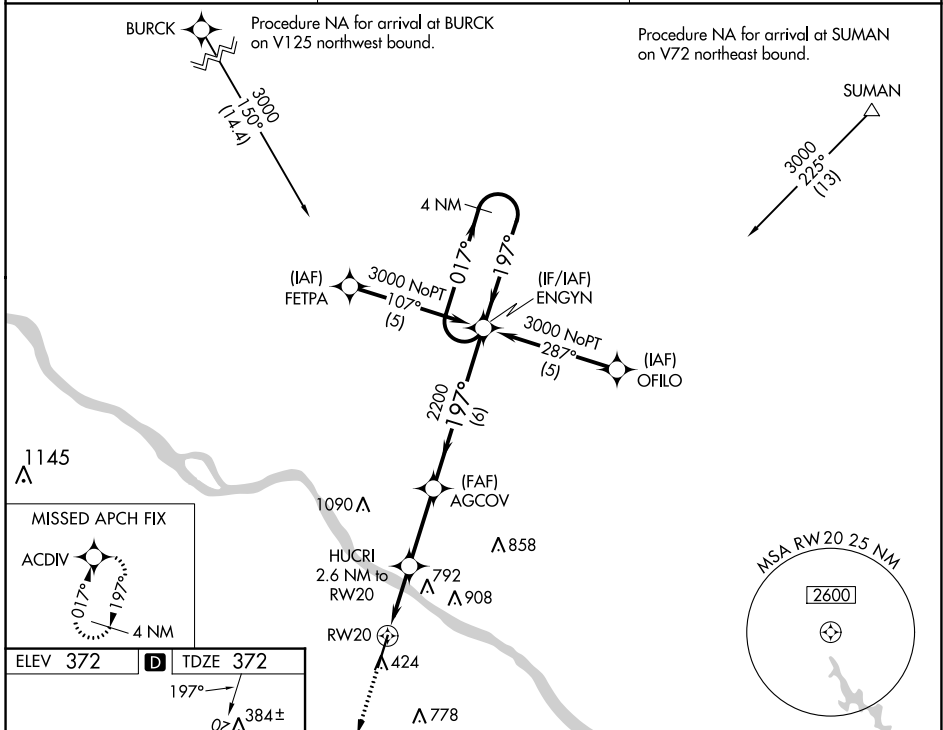
# RNAV (GPS) RWY 20

PERRYVILLE RGNL (PCD)

**⚠** For uncompensated Baro-VNAV systems, LNAV/VNAV NA below -15°C (5°F) or above 48°C (118°F). DME/DME RNP-0.3 NA.  
**⚠** Rwy 20 helicopter visibility reduction below ¾ SM NA.

MISSED APPROACH: Climb to 3000 direct ACDIV and hold.

AWOS-3PT <b>122.8</b>	KANSAS CITY CENTER <b>127.475 346.275</b>	UNICOM <b>122.8 (CTAF) ①</b>
--------------------------	--	---------------------------------



CATEGORY	A	B	C	D
LPV DA	622-1 250 (300-1)			
LNAV/VNAV DA	697-1½ 325 (400-1½)			
LNAV MDA	980-1	608 (700-1)	980-1¾	608 (700-1¾)
CIRCLING	980-1 608 (700-1)	1000-1 628 (700-1)	1260-2¾ 888 (900-2¾)	1260-3 888 (900-3)

NC-3, 18 MAY 2023 to 15 JUN 2023

NC-3, 18 MAY 2023 to 15 JUN 2023