

APP CRS	Rwy Idg	<b>2354</b>
<b>050°</b>	TDZE	<b>150</b>
	Apt Elev	<b>150</b>

# RNAV (GPS) RWY 5

CAMDEN COUNTY (19N)

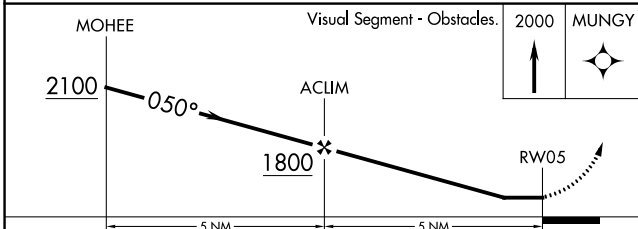
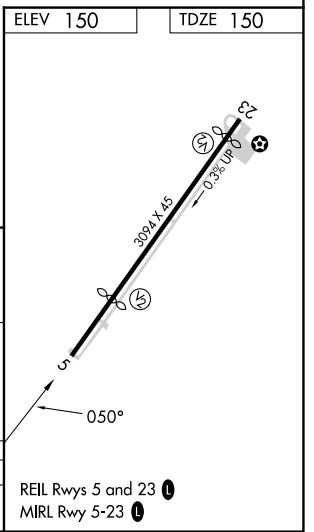
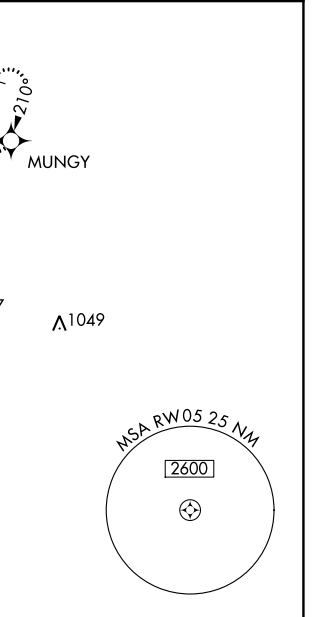
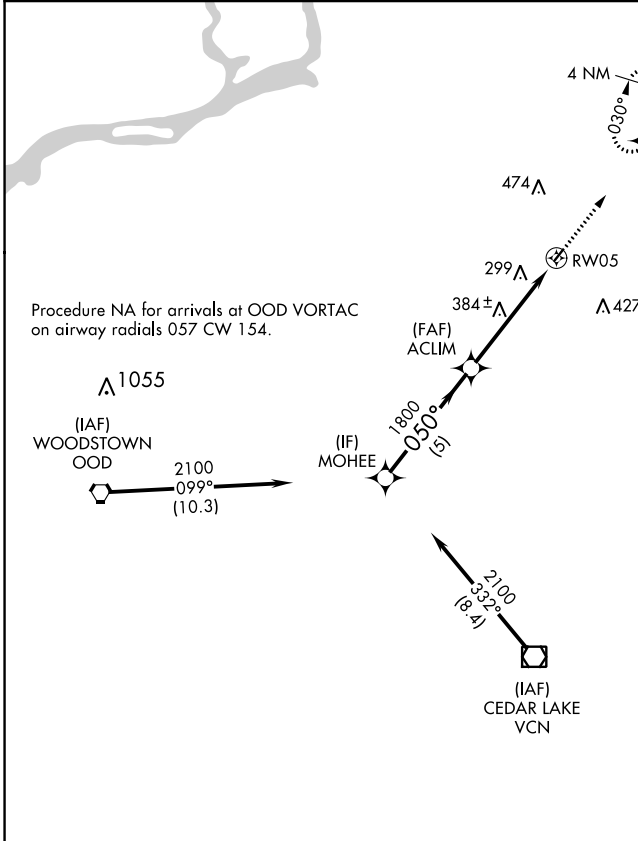
RNP APCH.

**▼** Rwy 5 helicopter visibility reduction below 1 SM NA.  
**▲ NA** Procedure NA at night. Use Mount Holly altimeter setting; when not received use Philadelphia Intl altimeter setting and increase all MDA 20 feet.

MISSED APPROACH: Climb to 2000 direct MUNGUY and hold.

MC GUIRE APP CON  
**126.475 363.8**

UNICOM  
**123.0 (CTAF) 1**



CATEGORY	A	B	C	D
LNAV MDA	740-1	590 (600-1)	NA	

REIL Rwy 5 and 23 1  
 MIRL Rwy 5-23 1

NE-2, 18 MAY 2023 to 15 JUN 2023

NE-2, 18 MAY 2023 to 15 JUN 2023