

WAAS CH 70534 W27A	APP CRS 274°	Rwy Idg TDZE 1146 Apt Elev 1150	4000
--	------------------------	---	-------------

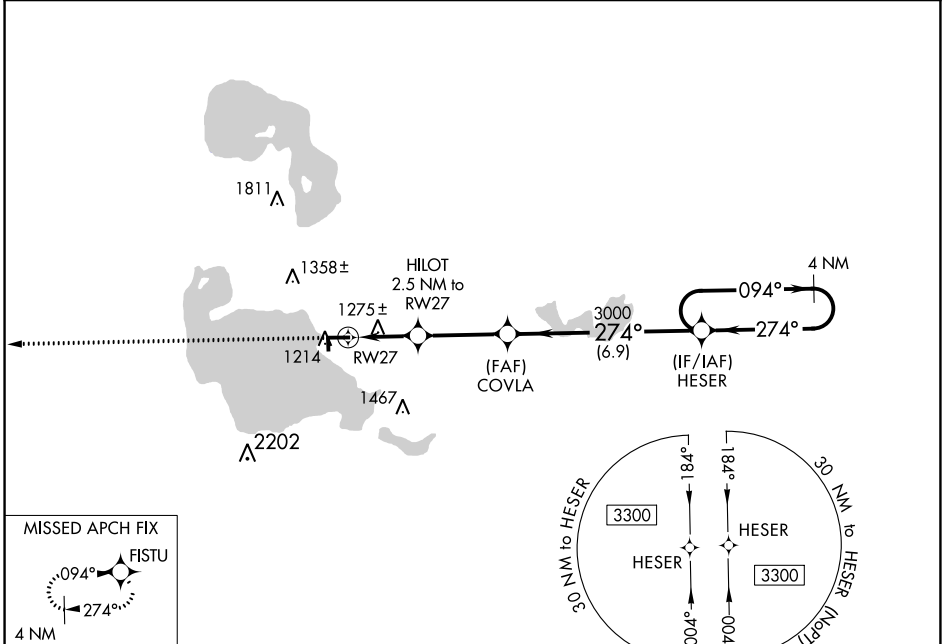
RNAV (GPS) RWY 27

ROSCOMMON COUNTY-BLODGETT MEML (HTL)

⚠ When local altimeter setting not received, use Gaylord altimeter setting and increase all MDAs 120 feet and visibility Cat C/D ½ SM. DME/DME RNP-0.3 NA. Procedure NA at night.
⚠ Helicopter visibility reduction below 1 SM NA. Circling NA to Rwy's 18, 36.

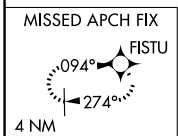
MISSED APPROACH: Climb to 3300 direct FISTU and hold.

ASOS 118.05	MINNEAPOLIS CENTER 125.475 269.45	UNICOM 122.8 (CTAF) 0
-----------------------	---	---------------------------------

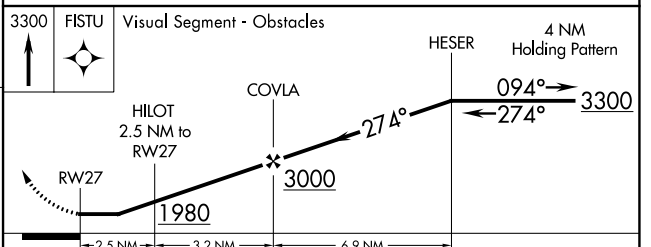
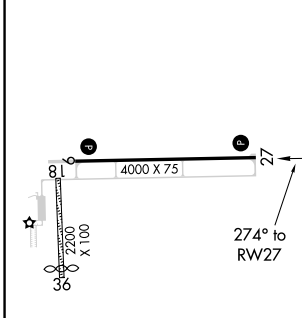


EC-1, 18 MAY 2023 to 15 JUN 2023

EC-1, 18 MAY 2023 to 15 JUN 2023



ELEV 1150	TDZE 1146
------------------	------------------



CATEGORY	A	B	C	D
LP MDA	1540-1	394 (400-1)	1540-1¼	394 (400-1¼)
LNAV MDA	1560-1	414 (500-1)	1560-1¼	414 (500-1¼)
CIRCLING	1600-1	450 (500-1)	1700-1½ 550 (600-1½)	1820-2 670 (700-2)