

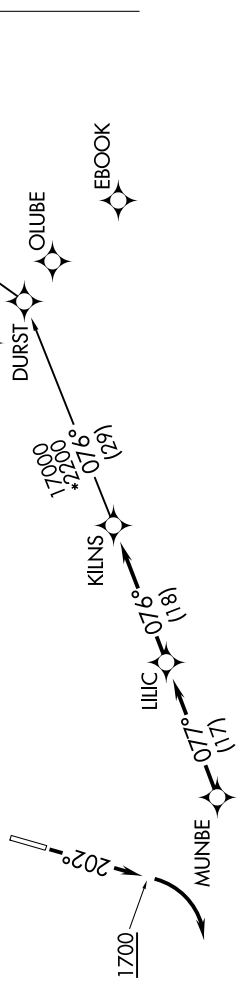
KILNS FOUR DEPARTURE (RNAV)

SE-2, 18 MAY 2023 to 15 JUN 2023

AWOS-3
118.175
CLNC DEL
127.35
UNICOM (CTAF)
122.725
CHARLOTTE DEP CON
128.325 307.8

TAKEOFF MINIMUMS

Rwy 2: Standard.
Rwy 20: 400-2 $\frac{3}{4}$ or standard with minimum climb of 205' per NM to 1300, or alternatively, with standard takeoff minimums and a normal 200' per NM climb gradient, takeoff must occur no later than 1200' prior to DER.



TOP ALTITUDE:
3000

NOTE: Chart not to scale.

DEPARTURE ROUTE DESCRIPTION

TAKEOFF RWY 20: Climb heading 202° to 1700 before turning right.

Climb on heading assigned by ATC, expect RADAR vectors to MUNBE, then on depicted route to KILNS, then on AUDII transition. Maintain 3000. Expect clearance to filed altitude within 10 minutes after departure.

AUDII TRANSITION (KILNS4.AUDII)

- NOTE: For turbojets only.
- NOTE: DME/DME/IRU or GPS required.
- NOTE: RNAV 1.
- NOTE: RADAR required.
- NOTE: Transponder code will be issued via PDC or Charlotte CLNC DEL if unable advise ATC.
- NOTE: Upon reaching 10000 MSL, accelerate to and maintain 280K, if unable advise ATC.
- NOTE: If unable to accept climb rates, advise ATC on initial contact.

KILNS FOUR DEPARTURE (RNAV)

SE-2, 18 MAY 2023 to 15 JUN 2023