

VOR/DME COU 110.2 Chan 39	APP CRS 153°	Rwy Idg 5500 TDZE 888 Apt Elev 889
---	------------------------	---

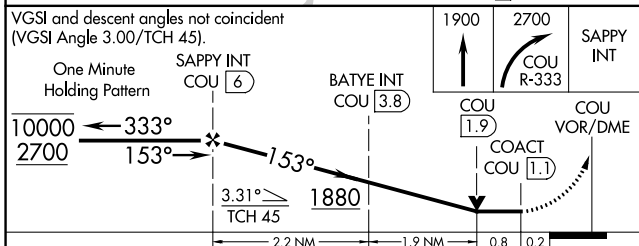
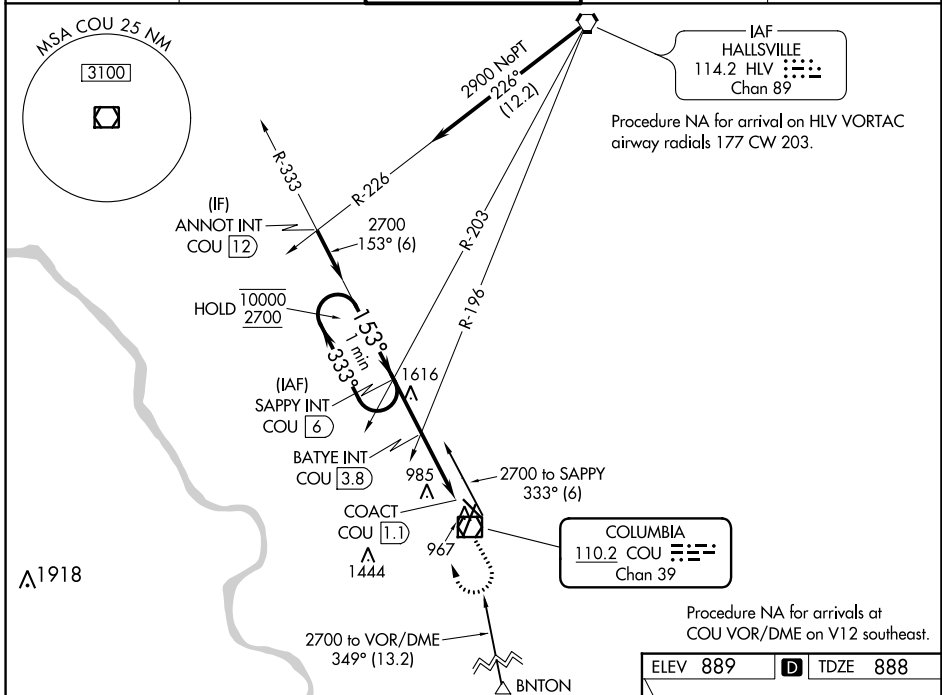
VOR RWY 13

COLUMBIA RGNL (COU)

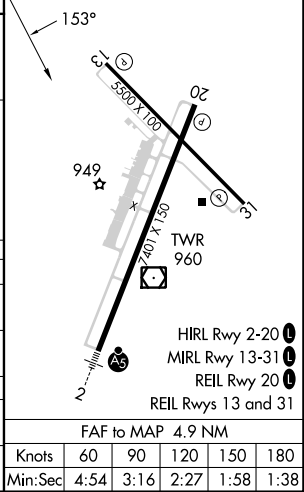
⚠ Circling NA for Cat D west of Rwy 2 and 13.
⚠ Circling Rwy 20 NA at night.

⚠ MISSED APPROACH: Climb to 1900 then dimbing right turn to 2700 on COU VOR/DME R-333 to SAPPY INT/COU 6 DME and hold.

ATIS 128.45	MIZU APP CON 124.375 353.925	COLUMBIA TOWER * 119.3 (CTAF) 363.25	GND CON 121.6	UNICOM 122.95
-----------------------	--	---	-------------------------	-------------------------



Procedure NA for arrivals at COU VOR/DME on V12 southeast.



CATEGORY	A	B	C	D
S-13	1880-1¼ 991 (1000-1¼)	1880-1½ 991 (1000-1½)	1880-3	991 (1000-3)
C CIRCLING	1880-1¼ 991 (1000-1¼)	1880-1½ 991 (1000-1½)	1880-3	991 (1000-3)
BATYE FIX MINIMUMS				
S-13	1240-1 351 (400-1)			
C CIRCLING	1300-1 411 (500-1)	1340-1 451 (500-1)	1360-1½ 471 (500-1½)	1440-2 551 (600-2)

ELEV 889	D TDZE 888
----------	-------------------

FAF to MAP 4.9 NM					
Knots	60	90	120	150	180
Min:Sec	4:54	3:16	2:27	1:58	1:38