

WAAS CH <b>56504</b> W <b>36A</b>	APP CRS <b>356°</b>	Rwy Idg TDZE Apt Elev	<b>4403</b> <b>918</b> <b>918</b>
---	------------------------	-----------------------------	---

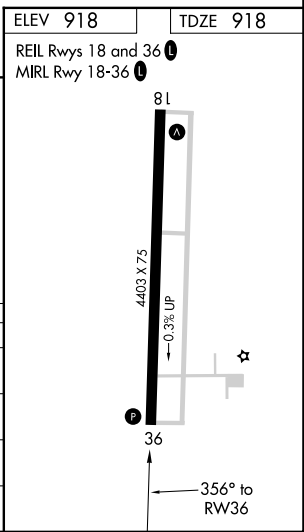
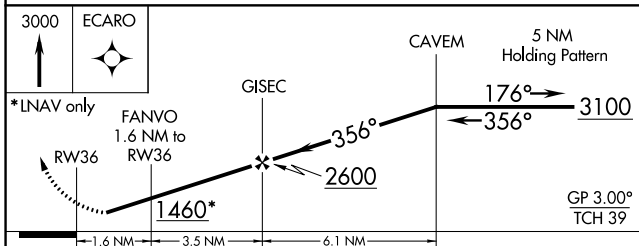
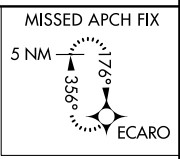
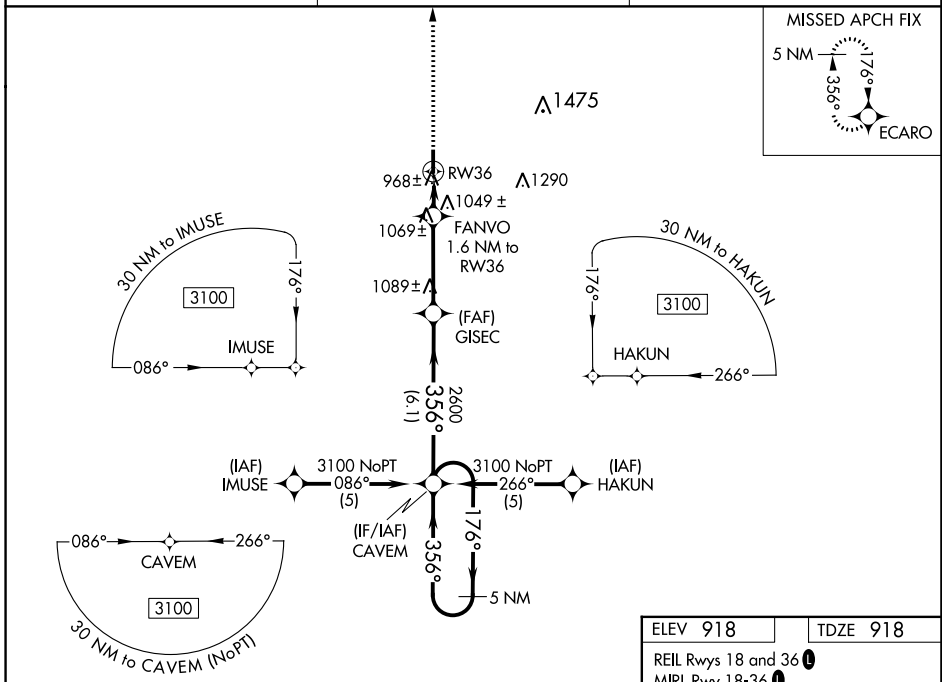
# RNAV (GPS) RWY 36

FORT SCOTT MUNI (F'SK)

**NA** When local altimeter setting not received, use Chanute altimeter setting and increase all DAs 93 feet and all MDAs 100 feet; increase Circling Cat C/D visibility 1/2 SM. Baro-VNAV NA when using Chanute altimeter setting. For uncompensated Baro-VNAV systems, LNAV/VNAV NA below -1.6°C (4°F) or above 47°C (116°F). DME/DME RNP-0.3 NA. Visibility reduction by helicopters NA.

**MISSED APPROACH:** Climb to 3000 direct ECARO and hold.

AWOS-3P <b>124.425</b>	KANSAS CITY CENTER <b>125.55 327.0</b>	UNICOM <b>122.8 (CTAF)</b>
---------------------------	---	-------------------------------



CATEGORY	A	B	C	D
LPV DA	1189-1 271 (300-1)			
LNAV/VNAV DA	1240-1 1/4 322 (400-1 1/4)			
LNAV MDA	1320-1 402 (500-1)	1320-1 1/4 402 (500-1 1/4)		
CIRCLING	1320-1 402 (500-1)	1380-1 462 (500-1)	1640-2 722 (800-2)	1640-2 1/4 722 (800-2 1/4)

NC-2, 18 MAY 2023 to 15 JUN 2023

NC-2, 18 MAY 2023 to 15 JUN 2023