

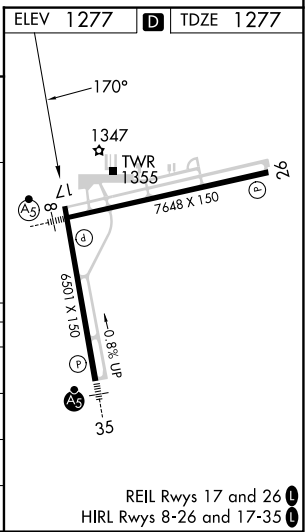
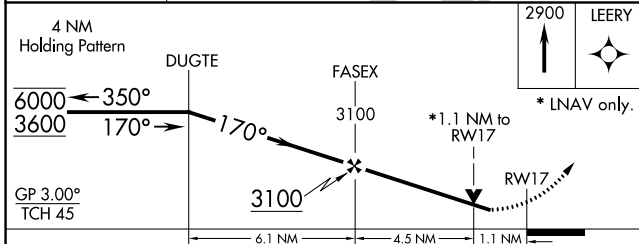
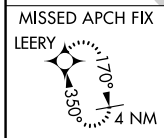
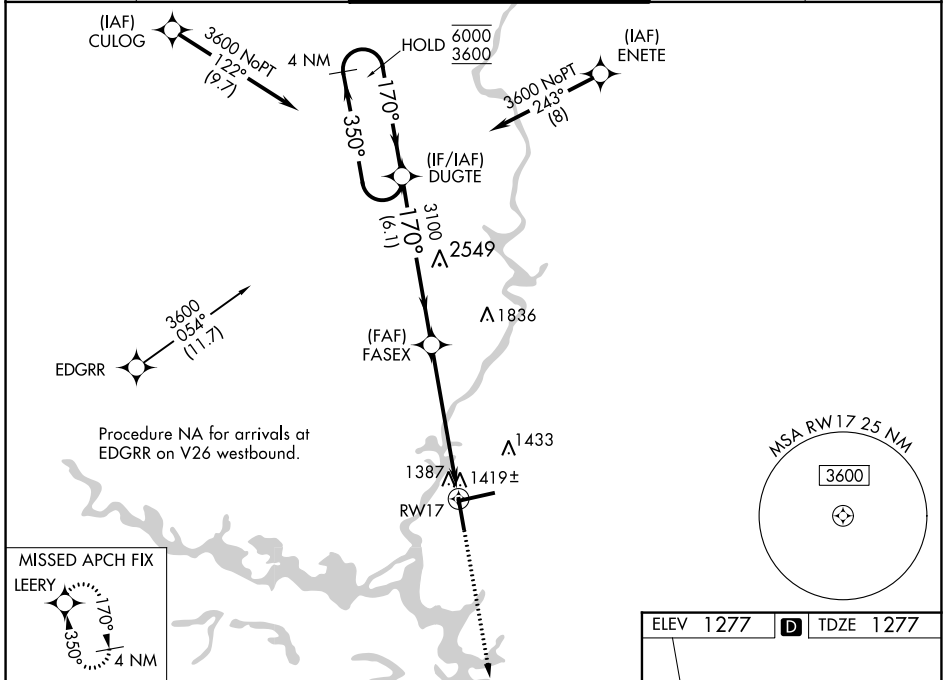
WAAS CH <b>53321</b> <b>W17A</b>	APP CRS <b>170°</b>	Rwy Idg TDZE Apt Elev	<b>6501</b> <b>1277</b> <b>1277</b>
--	------------------------	-----------------------------	---

# RNAV (GPS) RWY 17

CENTRAL WISCONSIN (CWA)

RNP APCH.		MISSED APPROACH: Climb to 2900 direct LEERY and hold.
⚠ Rwy 17 helicopter visibility reduction below 3/4 SM NA. ⚠ For uncompensated Baro-VNAV systems, LNAV/VNAV NA below -17°C or above 54°C.		

ATIS <b>127.45</b>	MINNEAPOLIS CENTER <b>124.4 317.7</b>	CWA TOWER* <b>119.75 (CTAF) 0 360.7</b>	GND CON <b>121.9 360.7</b>	UNICOM <b>122.95</b>
-----------------------	--	--	-------------------------------	-------------------------



CATEGORY	A	B	C	D
LPV DA	1534-1		257 (300-1)	
LNAV/VNAV DA	1601-1 1/8		324 (400-1 1/8)	
LNAV MDA	1680-1 403 (500-1)		1680-1 1/8 403 (500-1 1/8)	
<b>C</b> CIRCLING	1740-1 463 (500-1)		1740-1 1/2 463 (500-1 1/2) 1840-2 563 (600-2)	

EC-3, 18 MAY 2023 to 15 JUN 2023

EC-3, 18 MAY 2023 to 15 JUN 2023