

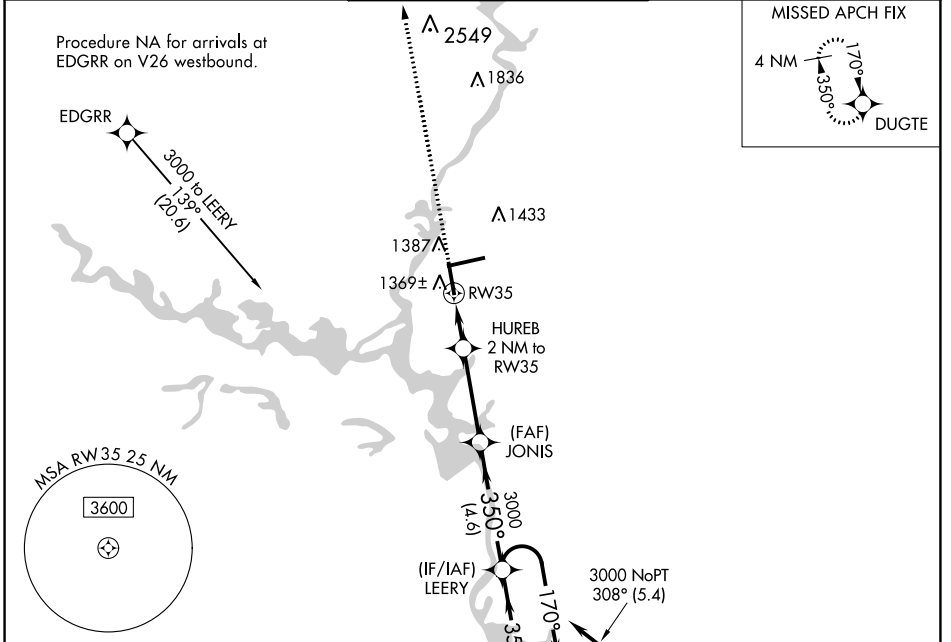
WAAS CH 93521 W35A	APP CRS 350°	Rwy Idg TDZE Apt Elev	6501 1251 1277
--	------------------------	-----------------------------	---

RNAV (GPS) RWY 35

CENTRAL WISCONSIN(CWA)

For uncompensated Baro-VNAV systems, LNAV/VNAV NA below -17°C (2°F) or above 54°C (130°F). DME/DME RNP-0.3 NA.	MALSR 	MISSED APPROACH: Climb to 3600 direct DUGTE and hold.

ATIS 127.45	MINNEAPOLIS CENTER 124.4 317.7	CWA TOWER* 119.75(CTAF) 360.7	GND CON 121.9 360.7	UNICOM 122.95
-----------------------	--	---	-------------------------------	-------------------------

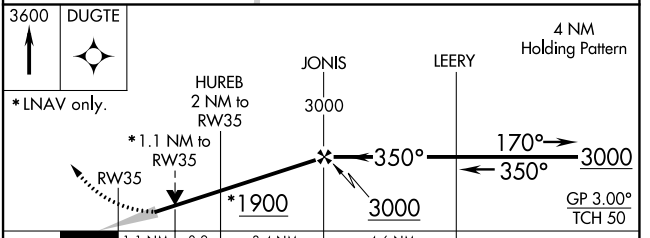
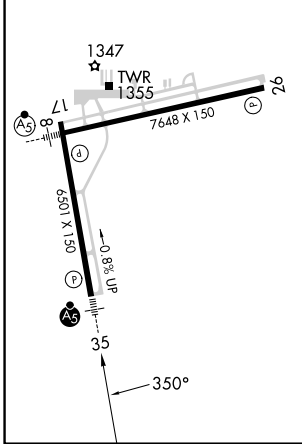


EC-3, 18 MAY 2023 to 15 JUN 2023

EC-3, 18 MAY 2023 to 15 JUN 2023

ELEV 1277	D	TDZE 1251
------------------	----------	------------------

REIL Rwy 17 and 26
HIRL Rwy 8-26 and 17-35



CATEGORY	A	B	C	D
LPV DA		1451-1/2	200 (200-1/2)	
LNAV/VNAV DA		1576-3/4	325 (300-3/4)	
LNAV MDA	1620-1/2	369 (400-1/2)	1620-5/8	369 (400-5/8)
C CIRCLING	1740-1	463 (500-1)	1740-1 1/2 463 (500-1 1/2)	1840-2 563 (600-2)