

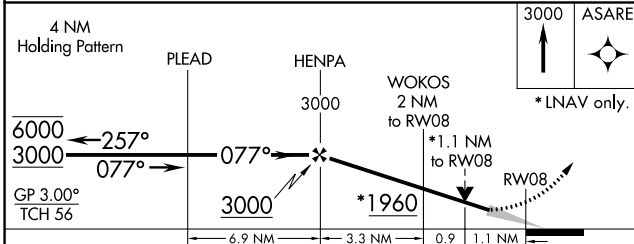
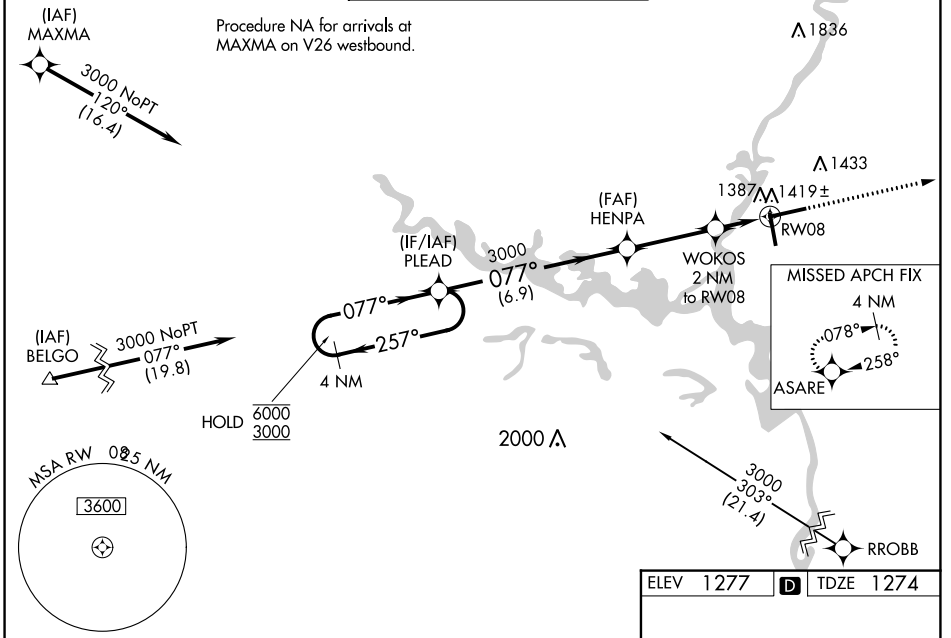
WAAS CH 42820 W08A	APP CRS 077°	Rwy Idg TDZE Apt Elev	7647 1274 1277
--	------------------------	-----------------------------	---

RNAV (GPS) RWY 8

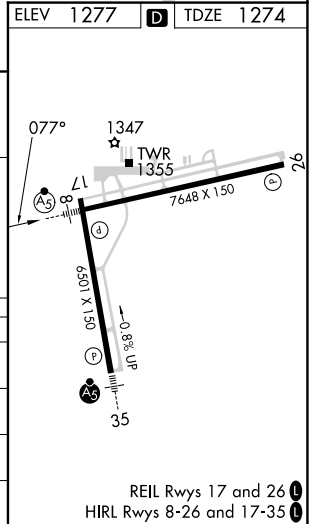
CENTRAL WISCONSIN (CWA)

RNP APCH.		MALSR	MISSED APPROACH: Climb to 3000 direct ASARE and hold.
<p>For uncompensated Baro-VNAV systems, LNAV/VNAV NA below -17°C or above 54°C.</p>			

ATIS 127.45	MINNEAPOLIS CENTER 124.4 317.7	CWA TOWER* 119.75 (CTAF) 360.7	GND CON 121.9 360.7	UNICOM 122.95
-----------------------	--	--	-------------------------------	-------------------------



CATEGORY	A	B	C	D
LPV DA		1474-3/4	200 (200-3/4)	
LNAV/VNAV DA		1601-1	327 (400-1)	
LNAV MDA	1680-1	406 (500-1)	1680-1 1/8	406 (500-1 1/8)
CIRCLING	1740-1	463 (500-1)	1740-1 1/2 463 (500-1 1/2)	1840-2 563 (600-2)



EC-3, 18 MAY 2023 to 15 JUN 2023

EC-3, 18 MAY 2023 to 15 JUN 2023