

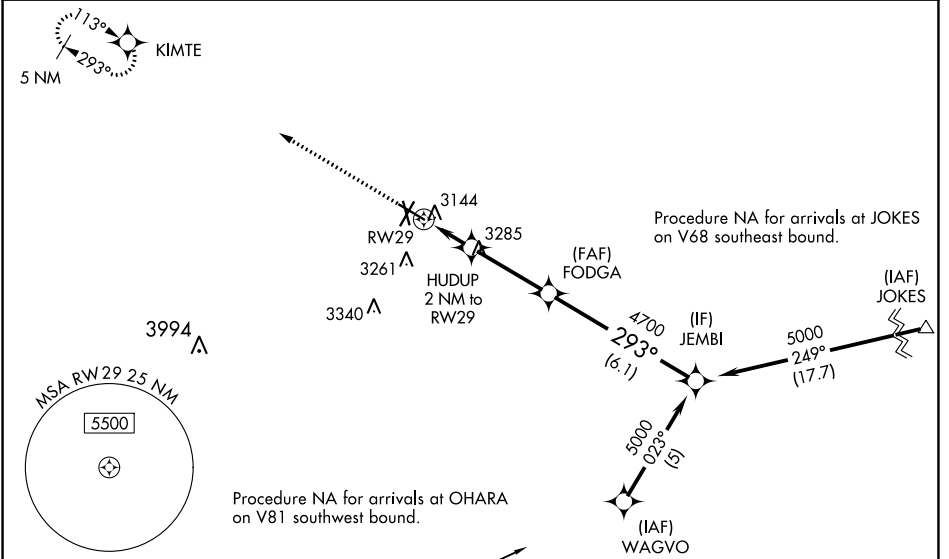
WAAS CH 86318 W29A	APP CRS 293°	Rwy Idg TDZE Apt Elev	6200 2980 3004
--	------------------------	-----------------------------	---

RNAV (GPS) RWY 29

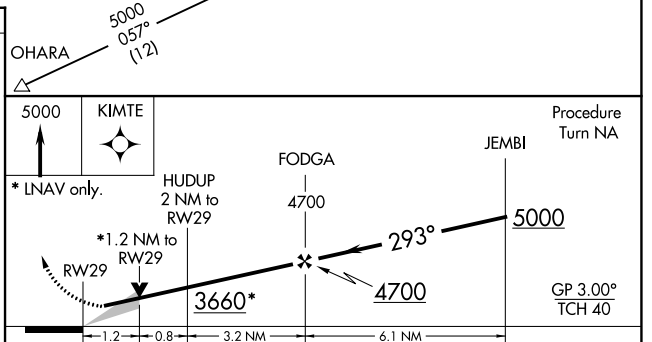
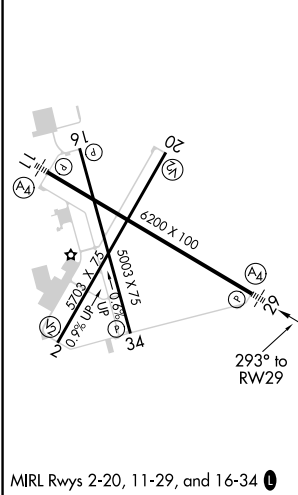
ODESSA-SCHLEMEYER FLD (ODO)

RNP APCH.	<p>MALS </p> <p>MISSED APPROACH: Climb to 5000 direct KIMTE and hold.</p>
<p>▼ Baro-VNAV NA when using Midland Intl Air and Space Port altimeter setting. For uncompensated Baro-VNAV systems, LNAV/VNAV NA below -21°C or above 43°C. ▲ Circling NA south of Rwy 2 and 34. When local altimeter setting not received use Midland Intl Air and Space Port altimeter setting and increase all DAs 41 feet and all MDAs 60 feet and increase LNAV Cats C and D visibility 1/8 SM, Circling Cat C visibility 1/4 SM. VDP NA with Midland Intl Air and Space Port altimeter setting.</p>	

ASOS 119.275	MIDLAND APP CON★ 124.6 256.875	CLNC DEL 121.7	UNICOM 123.0 (CTAF) ①
------------------------	--	--------------------------	---------------------------------



ELEV 3004	TDZE 2980
-----------	-----------



CATEGORY	A	B	C	D
LPV DA		3180-3/4 200 (200-3/4)		
LNAV/VNAV DA		3414-1 1/2 434 (500-1 1/2)		
LNAV MDA	3400-1	420 (500-1)	3400-1 1/4 420 (500-1 1/4)	
CIRCLING	3460-1	456 (500-1)	3600-1 1/2 596 (600-1 1/2)	3600-2 596 (600-2)