

(MEARZ7.MEARZ) 22139

MEARZ SEVEN DEPARTURE

AL-5733 (FAA)

EAGLE CREEK AIRPARK (EYE)

INDIANAPOLIS, INDIANA

**TOP ALTITUDE:
ASSIGNED BY ATC**

RADAR required.

ASOS
121.575
CLNC DEL
128.6
INDIANAPOLIS DEP CON
119.05 317.8

BOILER
115.1 BVT
Chan 98
N40° 33.37'
W87° 04.16'
L-27, H-5

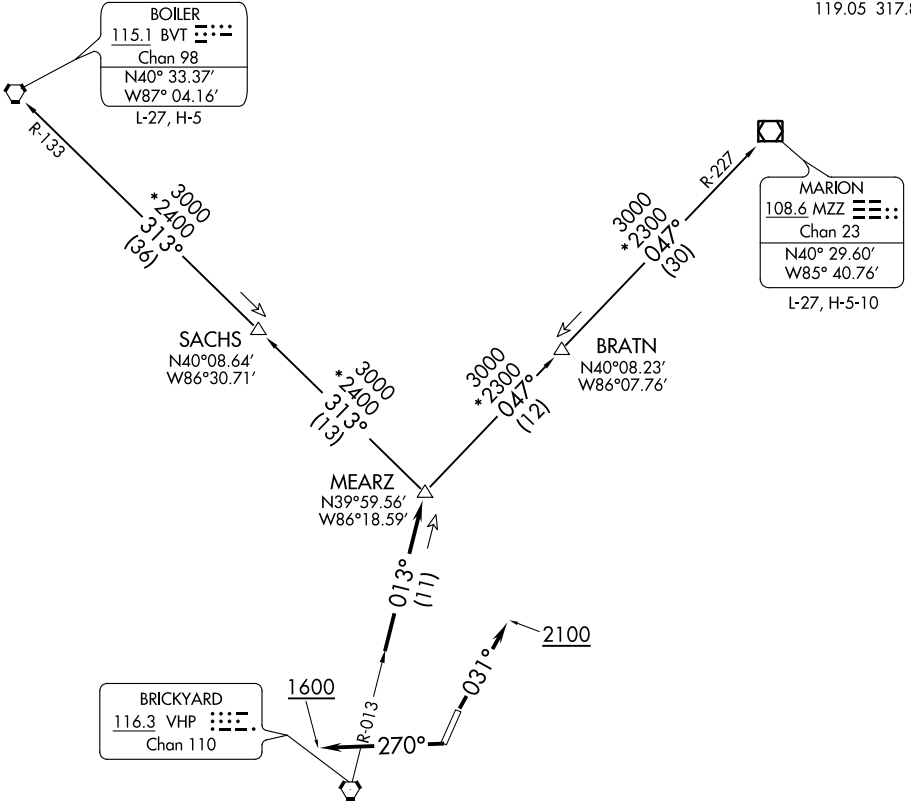
MARION
108.6 MZZ
Chan 23
N40° 29.60'
W85° 40.76'
L-27, H-5-10

SACHS
N40°08.64'
W86°30.71'

BRATN
N40°08.23'
W86°07.76'

MEARZ
N39°59.56'
W86°18.59'

BRICKYARD
116.3 VHP
Chan 110

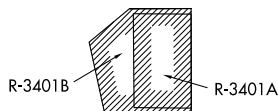


TAKEOFF MINIMUMS

Rwy 3, 21: Standard.

- NOTE: Turbojets accelerate to 250K until reaching 10000, if unable advise ATC.
- NOTE: Assigned to aircraft with a requested altitude of 11000 or above.
- NOTE: Select appropriate localizer/DME frequency/channel prior to departure.

(NARRATIVE ON FOLLOWING PAGE)



NOTE: Chart not to scale.

MEARZ SEVEN DEPARTURE

(MEARZ7.MEARZ) 19MAY22

INDIANAPOLIS, INDIANA
EAGLE CREEK AIRPARK (EYE)

EC-2, 18 MAY 2023 to 15 JUN 2023

EC-2, 18 MAY 2023 to 15 JUN 2023