

WAAS CH 82509 W21A	APP CRS 211°	Rwy Idg TDZE Apt Elev	4200 823 823
--	------------------------	-----------------------------	---

RNAV (GPS) RWY 21

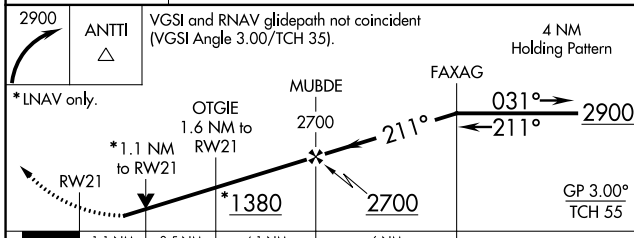
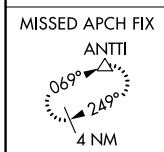
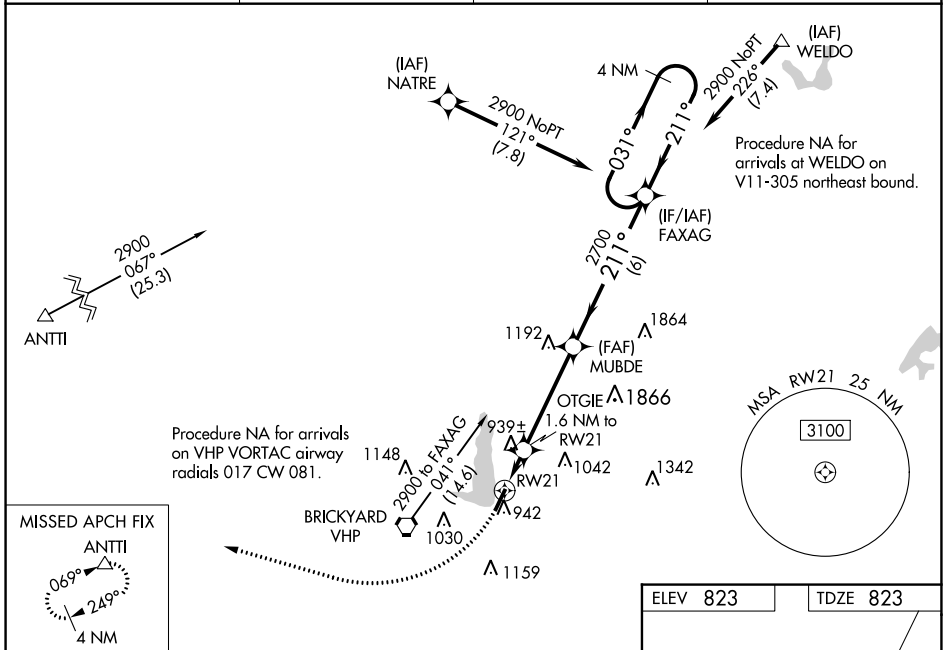
EAGLE CREEK AIRPARK (EYE)

⚠ For uncompensated Baro-VNAV systems, LNAV/VNAV NA below 0°C (32°F) or above 54°C (130°F). DME/DME RNP-0.3 NA. For inoperative MAL S, increase LPV visibility all Cats to 7/8 mile. Inoperative table does not apply to LNAV/VNAV. Helicopter visibility reduction below 3/4 SM NA.

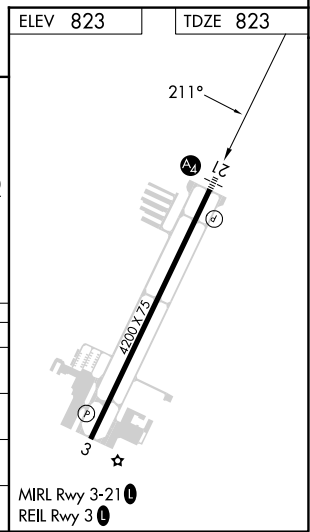
MALS

MISSED APPROACH: Climbing right turn to 2900 direct ANTTI and hold.

ASOS 121.575	INDIANAPOLIS APP CON 119.05 317.8	CLNC DEL 128.6	UNICOM 122.8 (CTAF)
------------------------	---	--------------------------	-------------------------------



CATEGORY	A	B	C	D
LPV DA	1091-3/4	268 (300-3/4)		NA
LNAV/VNAV DA	1076-3/4	253 (300-3/4)		NA
LNAV MDA	1200-3/4	377 (400-3/4)		NA
CIRCLING	1320-1	497 (500-1)	1500-2 677 (700-2)	NA



EC-2, 18 MAY 2023 to 15 JUN 2023

EC-2, 18 MAY 2023 to 15 JUN 2023