

# HI-ILS or LOC RWY 21

LOC/DME I-GTB <b>108.5</b> Chan <b>22</b>	APCH CRS <b>209°</b>	Rwy Idg <b>10,000</b> TDZE <b>677</b> Arpt Elev <b>690</b>
---	-------------------------	--

AL-5754 [USA]

WHEELER-SACK AAF (KGTB)

DME or RADAR required.

ALSF-1



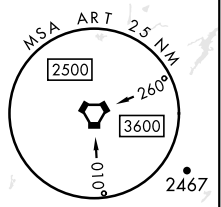
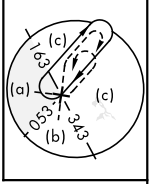
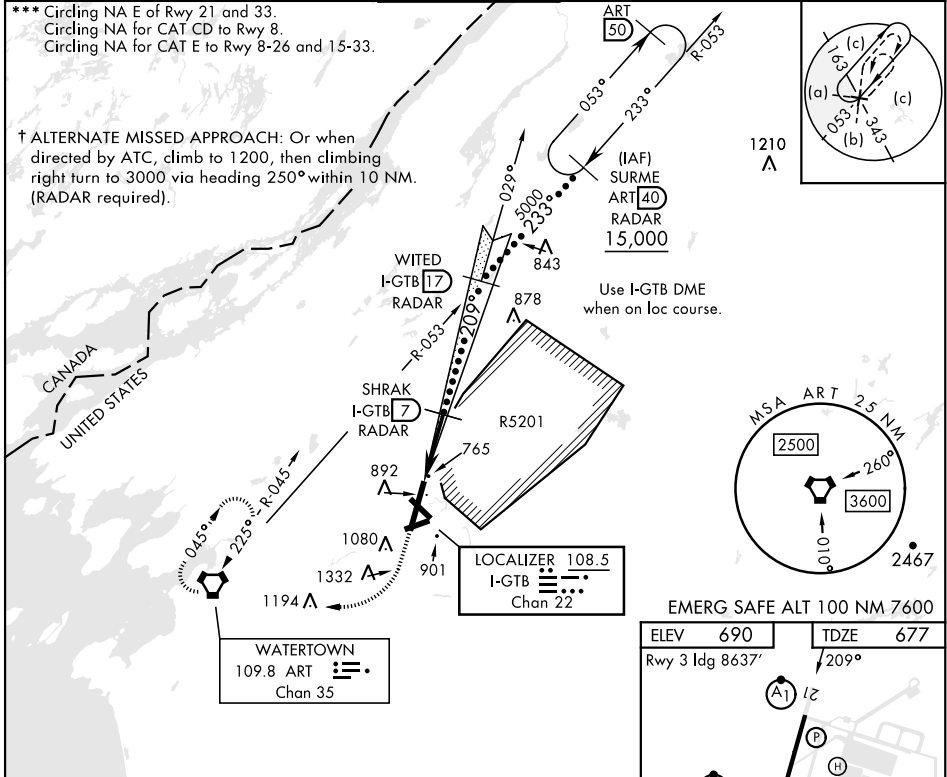
† MISSED APPROACH: Climb to 1200, then climbing right turn to 5000 direct ART VORTAC and hold. Continue climb in hold to 5000.

- \* When ALS inop, increase vis to ¾ mile.
- \*\* When ALS inop, increase CAT C vis to 1 mile, CAT DE vis to 1¼ miles.

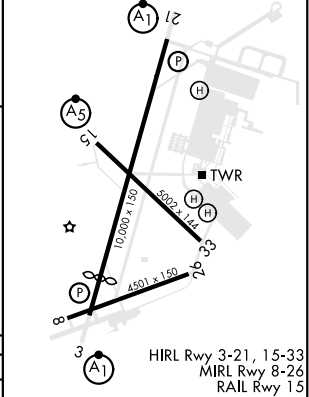
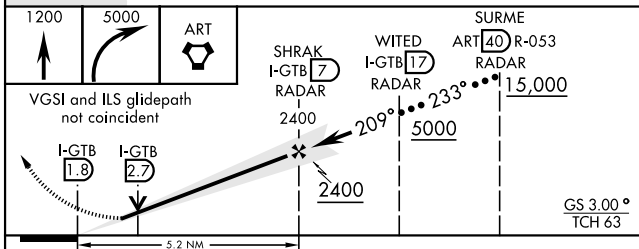
ATIS <b>119.525</b>	APP CON <b>124.875 257.6</b>	TOWER <b>118.75 290.25</b>	GND CON <b>121.9 229.8</b>	CLNC DEL <b>121.9</b>	ASR/PAR
------------------------	---------------------------------	-------------------------------	-------------------------------	--------------------------	---------

\*\*\* Circling NA E of Rwy 21 and 33.  
Circling NA for CAT CD to Rwy 8.  
Circling NA for CAT E to Rwy 8-26 and 15-33.

† ALTERNATE MISSED APPROACH: Or when directed by ATC, climb to 1200, then climbing right turn to 3000 via heading 250° within 10 NM. (RADAR required).



ELEV 690	TDZE 677
Rwy 3 Idg 8637'	209°



CATEGORY	C	D	E
S-ILS 21*	877-½	200	(200-½)
S-LOC 21**	1040-¾	363	(400-¾)
CIRCLING ***	1220-1½	1380-2¼	1640-3
	530 (600-1½)	690 (700-2¼)	950 (1000-3)

FAF to MAP 5.2 NM					
Knots	120	140	160	180	200
Min:Sec	2:36	2:14	1:57	1:44	1:34

# HI-ILS or LOC RWY 21

NE-2, 18 MAY 2023 to 15 JUN 2023

NE-2, 18 MAY 2023 to 15 JUN 2023