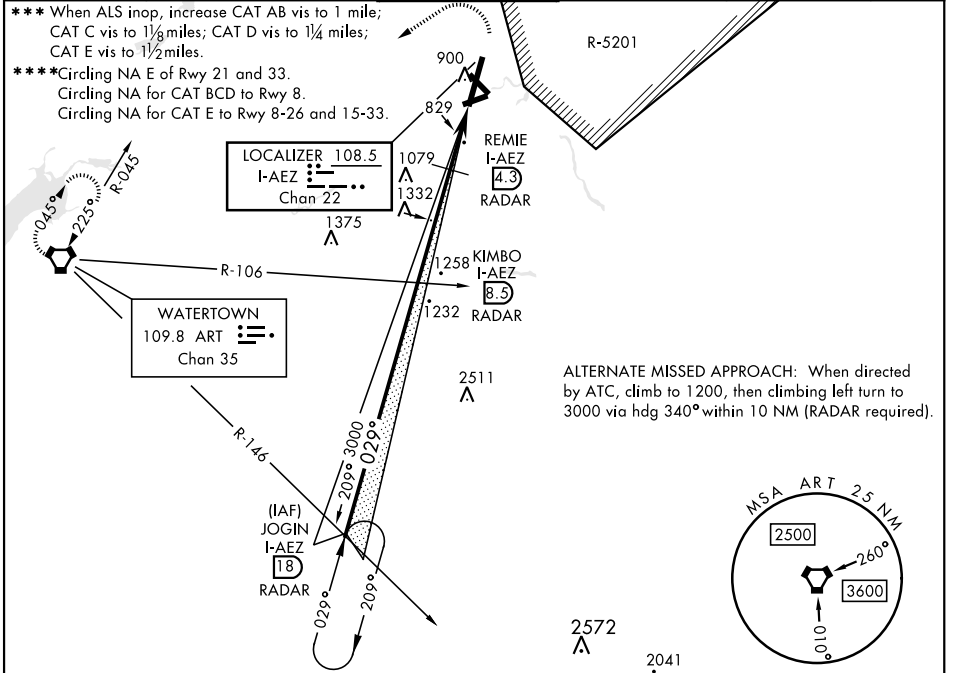


LOC/DME I-AEZ 108.5 Chan 22	APCH CRS 029°	Rwy ldg TDZE Arpt Elev 8637 685 690	AL-5754 [USA]	WHEELER-SACK AAF (KGTB)
---	-------------------------	---	---------------	-------------------------

DME or RADAR required. RADAR required for procedure entry.	ALS-F1 	MISSED APPROACH: Climb to 1200, then climbing left turn to 5000 direct ART VORTAC and hold. Continue climb-in-hold to 5000.
--	------------	---

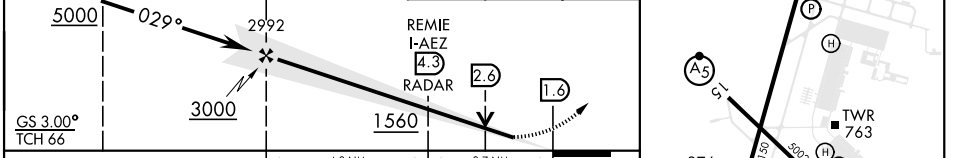
ATIS 119.525	APP CON 124.875 257.6	TOWER 118.75 290.25	GND CON 121.9 229.8	CLNC DEL 121.9	ASR/PAR
------------------------	---------------------------------	-------------------------------	-------------------------------	--------------------------	---------



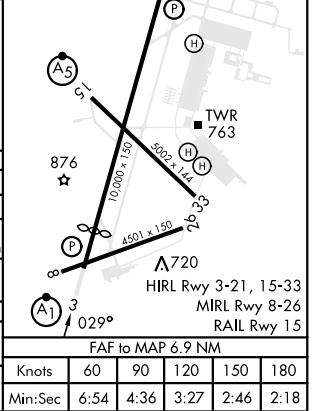
NE-2, 18 MAY 2023 TO 15 JUN 2023

NE-2, 18 MAY 2023 TO 15 JUN 2023

JOGIN I-AEZ 18 RADAR	KIMBO I-AEZ 8.3 RADAR	1200	5000	ART	ELEV 690	TDZE 685
-----------------------------	------------------------------	------	------	-----	----------	----------



CATEGORY	A	B	C	D	E
S-ILS 3 *	957-1/2		272	(300-1/2)	
S-LOC 3 **	1560-1/2 875 (900-1/2)	1560-3/4 875 (900-3/4)	1560-2 875 (900-2)	1560-2 1/4 875 (900-2 1/4)	1560-2 1/2 875 (900-2 1/2)
**** CIRCLING	1560-1 1/4 870 (900-1 1/4)		1560-2 1/2 870 (900-2 1/2)	1560-2 3/4 870 (900-2 3/4)	1640-3 950 (1000-3)
DME MINIMUMS					
S-LOC 3 ***	1080-1/2 395 (400-1/2)		1080-3/4 395 (400-3/4)	1080-1 395 (400-1)	
**** CIRCLING	1200-1 510 (600-1)		1220-1 1/2 530 (600-1 1/2)	1380-2 1/4 690 (700-2 1/4)	1640-3 950 (1000-3)



FAF to MAP 6.9 NM					
Knots	60	90	120	150	180
Min:Sec	6:54	4:36	3:27	2:46	2:18